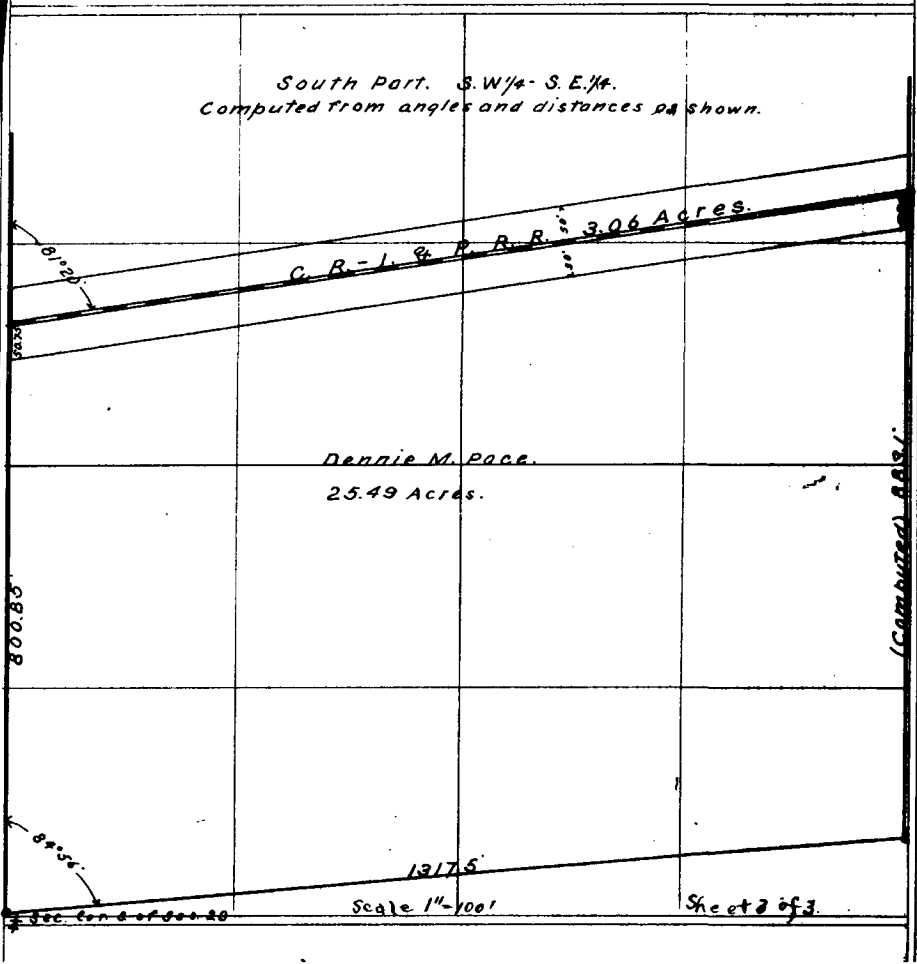


South Part. S.W. 1/4 - S.E. 1/4.  
Computed from angles and distances as shown.



Filed for Record February 10th A.M. 1919  
at 945 O'clock A.M.

Mattie E. W. Finch's Recorder  
Doc # 213

I certify the above is a correct plat as computed  
from angles and distances as shown above  
required by O.A. Street and Dennis M. Page  
Jan. 29, 1919. E.B. Cook County Clerk.