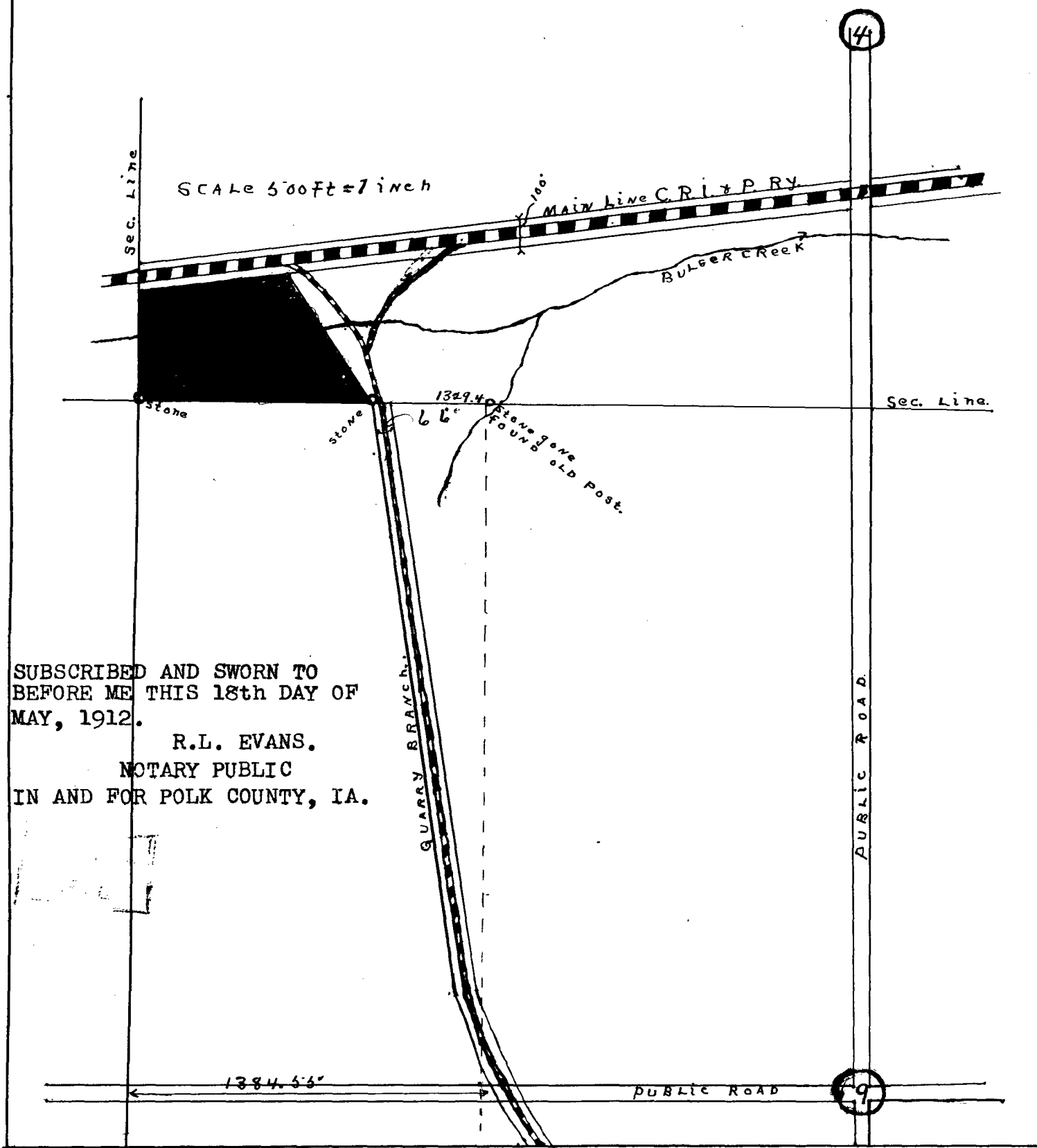


CERTIFICATE OF SURVEY

SEC. 4. TWP. 77. N. RANGE 28. W. 5th. P.M.
 COMMENCE AT STONE AT S.W. CORNER SEC. 4. T. 77. R. 28. THENCE DUE EAST TO STONE
 PLANTED AT INTERSECTION OF WEST LINE OF QUARRY BRANCH R.R. RIGHT-OF-WAY DISTANCE
 886ft.; THENCE N. $35^{\circ}-4'$ W. TO INTERSECTION OF SOUTH LINE C.R.I. & P. Ry
 RIGHT OF WAY ON MAIN LINE DISTANCE 588.6 FT.; THENCE S. $82^{\circ}-59'$ W. ON SOUTH
 LINE OF C.R.I. & P. Ry. RIGHT OF WAY TO INTERSECTION OF SECTION LINE BETWEEN
 SECTIONS 4 & 5 T. 77, R. 28. DISTANCE 556.3 FT.; THENCE 416.8 FT SOUTH ON
 SAID SECTION LINE TO STONE AT S.W. CORNER OF SECTION 4, THE PLACE OF BEGINN-
 ING. CONTAINING 7.576 (SEVEN, AND FIVE HUNDRED AND SEVENTY-SIX THOUSANTHS)
 ACRES. I HEREBY CERTIFY THAT THIS IS A CORRECT PLAT AND NOTES MADE AT THE
 REQUEST OF HARRY W. HILL OF EARLHAM, IA. SURVEYED MAY 13, 1912.

H.H. FLANAGAN ENGR.



FILED FOR RECORD MAY 20th A.D. 1912 AT 10.20 O'CLOCK A. M.

GEORGE HILL RECORDER.
 BY DAISY HILL DEPUTY.