



Document 2016 1084

Book 2016 Page 1084 Type 06 043 Pages 1  
Date 4/27/2016 Time 10:35:49AM  
Rec Amt \$7.00

INDX ✓  
ANNO  
SCAN  
CHK

LISA SMITH, COUNTY RECORDER  
MADISON COUNTY IOWA

✓ Daniels Land Surveying, 22598 18th Avenue, New Virginia, IA 50210, 515-577-2583

# UNITED STATES PUBLIC LAND CORNER CERTIFICATE OF

Land Survey Monuments situated in Section 12, Township 74 N, Range 27 W, of the  
5th P.M., Madison County, Iowa. Previously recorded in n.a.  
in County Recorders Office. (book, page, document number, etc.)

(Show reason for preparing this certificate, the evidence and detailed procedures used in  
establishing the corner positions and monumentation found or placed.)

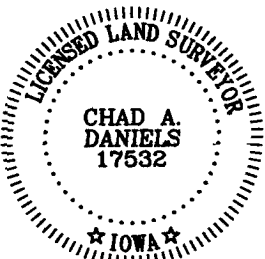
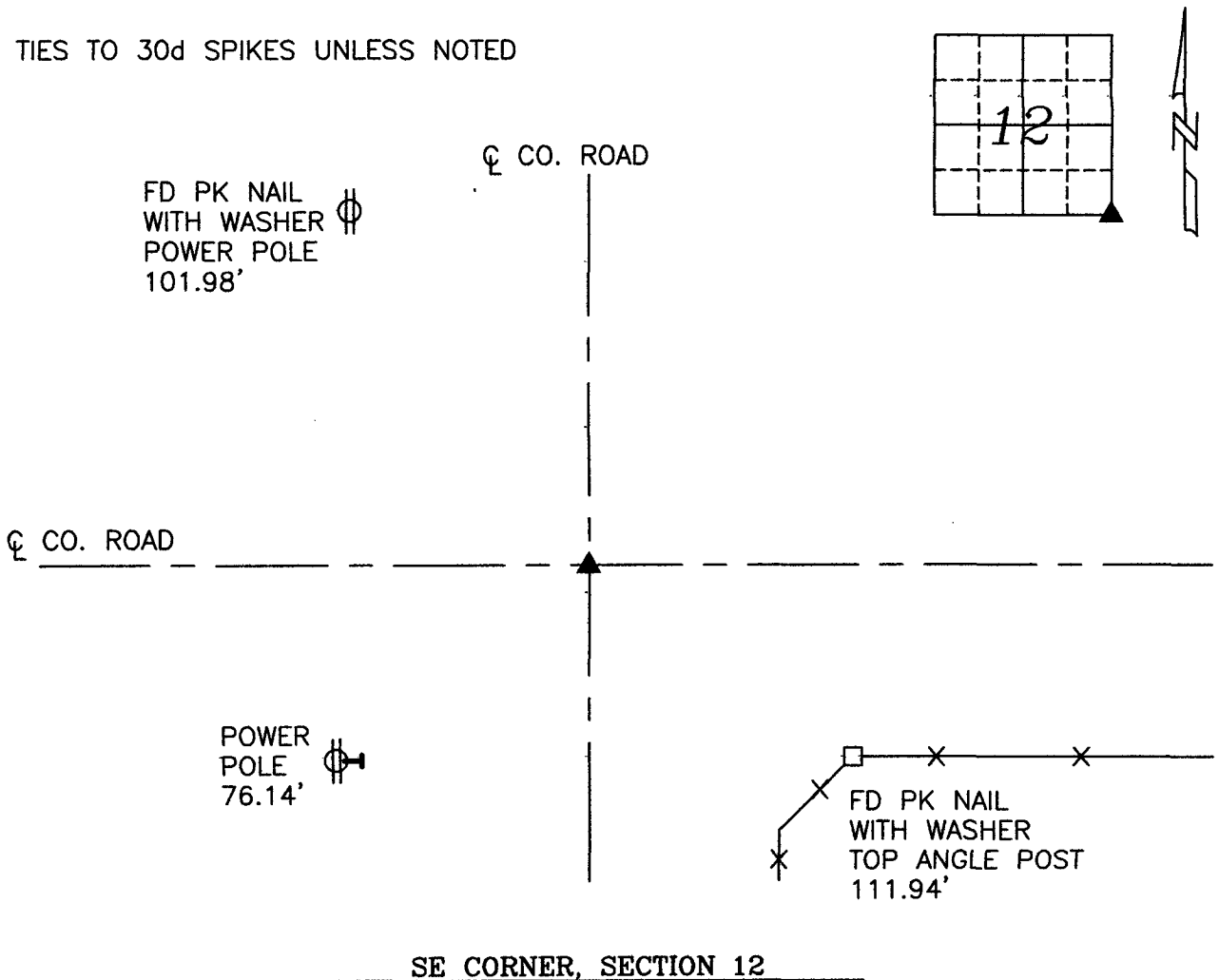
### Monument Description and Remarks:

Set PK Nail in Asphalt based on County Engineer information of the corner from  
old plans.

## PLAN VIEW

(Show a minimum of three reference ties to durable physical objects, relevant monuments  
and physical conditions that will enable recovery of the corner.)

ALL TIES TO 30d SPIKES UNLESS NOTED



I hereby certify that this land surveying document was prepared and the  
related survey work was performed by me or under my direct personal  
supervision and that I am a duly licensed Land Surveyor under the laws  
of the State of Iowa.

Signature: Chad A. Daniels Date: 4/25/2016  
Chad A. Daniels

License number 17532  
My license renewal date is December 31, 2016