



Document 2015 865

Book 2015 Page 865 Type 06 043 Pages 1

Date 4/07/2015 Time 12:43 PM

Rec Amt \$7.00

INDX  
ANNO  
SCAN

LISA SMITH, COUNTY RECORDER  
MADISON COUNTY IOWA

CHEK

PREPARED BY & RETURN TO: BRADLEY R. GEATER, PLS / MCCLURE ENGINEERING COMPANY / 1360 NW 121ST STREET, CLIVE, IA 50325 / 515-964-1229

# U.S. PUBLIC LAND SURVEY CORNER CERTIFICATE

OF LAND SURVEY MONUMENT SITUATED IN SECTION 29, TOWNSHIP 75, RANGE 26 WEST OF THE FIFTH PRINCIPAL MERIDIAN,  
MADISON COUNTY, IOWA. NOT PREVIOUSLY RECORDED IN N/A COUNTY RECORDER'S OFFICE.

### REASON FOR PREPARING THIS CERTIFICATE:

- THERE IS NO CERTIFICATE FOR THE CORNER ON FILE WITH THE RECORDER OF THE COUNTY IN WHICH THE CORNER IS LOCATED
- THE SURVEYOR IN RESPONSIBLE CHARGE OF THE LAND SURVEYING ACCEPTS A CORNER POSITION WHICH DIFFERS FROM THAT SHOWN IN THE PUBLIC RECORDS OF THE COUNTY IN WHICH THE CORNER IS LOCATED
- THE CORNER MONUMENT IS REPLACED OR MODIFIED IN ANY WAY
- THE REFERENCE TIES IN AN EXISTING PUBLIC RECORD ARE INCORRECT OR MISSING

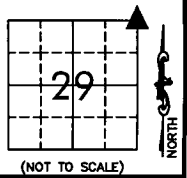
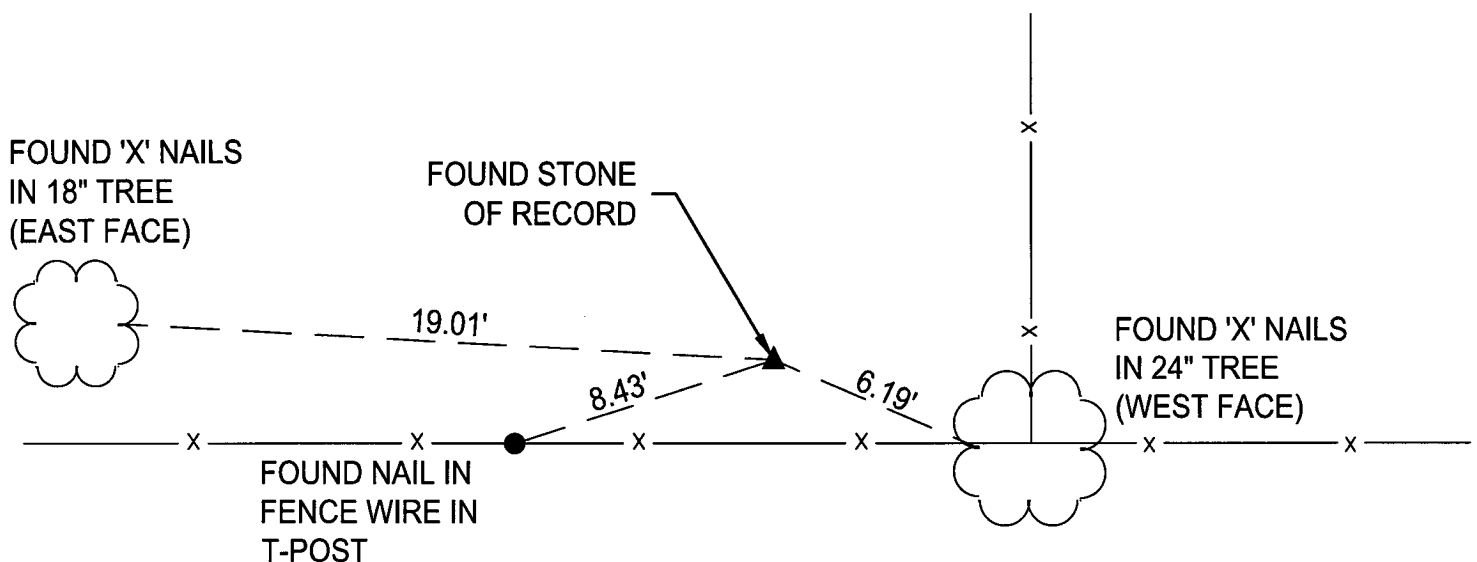
### DESCRIPTION OF ORIGINAL AND SUBSEQUENT SURVEYS REFERENCING THIS CORNER LOCATION:

1. THERE ARE NO PREVIOUS TIES OF RECORD OF THIS CORNER
2. SURVEYS REFERENCING THIS CORNER: PARCEL B IN BK 03-PG 581 AND SURVEY BK 2007-PG 3616
3. CORNER WAS USED FOR PLAT OF SURVEY IN THE NORTHEAST QUARTER OF SECTION 29. MCCLURE ENGINEERING PROJECT MAD-2715008

### DESCRIPTION OF CORNER FOUND OR A DETAILED STATEMENT OF THE METHOD USED TO ESTABLISH / REESTABLISH THIS CORNER:

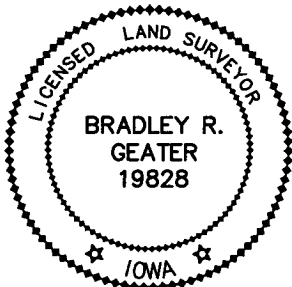
1. FOUND STONE BY USING SURVEYS OF RECORD.

### SKETCH OF THE MONUMENT AND ITS ACCESSORIES:



**MCCLURE**<sup>TM</sup>  
ENGINEERING CO.  
building strong communities.

1360 NW 121ST STREET  
CLIVE, IOWA 50325  
515-964-1229  
fax 515-964-2370



I HEREBY CERTIFY THAT THIS LAND SURVEYING DOCUMENT WAS PREPARED AND THE RELATED WORK WAS PERFORMED BY ME OR UNDER MY DIRECT PERSONAL SUPERVISION AND THAT I AM A DULY LICENSED LAND SURVEYOR UNDER THE LAWS OF THE STATE OF IOWA.

SIGNATURE: Bradley R. Geater DATE: 4/6/2015  
BRADLEY R. GEATER

MY LICENSE RENEWAL DATE IS DECEMBER 31, 2015  
PAGES OR SHEETS COVERED BY THIS SEAL: THIS SHEET

DATE SURVEYED: 03/25/2015

DRAWING PATH: N: \Projects\MAD 2715008\Dwgs\Survey  
\Plats of Survey

CORNERS TO BE INDEXED			
CORNER	SEC.	TWP.	RGE.
NE COR	29	75	26
SE COR	20	75	26
SW COR	21	75	26
NW COR	28	75	26