



Document 2015 864

Book 2015 Page 864 Type 06 043 Pages 1

Date 4/07/2015 Time 12:42 PM

Rec Amt \$7.00

INDX
ANNO
SCAN

LISA SMITH, COUNTY RECORDER
MADISON COUNTY IOWA

CHEK

PREPARED BY & RETURN TO: BRADLEY R. GEATER, PLS / MCCLURE ENGINEERING COMPANY / 1360 NW 121ST STREET, CLIVE, IA 50325 / 515-964-1229

U.S. PUBLIC LAND SURVEY CORNER CERTIFICATE

OF LAND SURVEY MONUMENT SITUATED IN SECTION 20, TOWNSHIP 75, RANGE 26 WEST OF THE FIFTH PRINCIPAL MERIDIAN, MADISON COUNTY, IOWA. PREVIOUSLY RECORDED IN BK 2006-PG 1976 COUNTY RECORDER'S OFFICE.

REASON FOR PREPARING THIS CERTIFICATE:

- THERE IS NO CERTIFICATE FOR THE CORNER ON FILE WITH THE RECORDER OF THE COUNTY IN WHICH THE CORNER IS LOCATED
- THE SURVEYOR IN RESPONSIBLE CHARGE OF THE LAND SURVEYING ACCEPTS A CORNER POSITION WHICH DIFFERS FROM THAT SHOWN IN THE PUBLIC RECORDS OF THE COUNTY IN WHICH THE CORNER IS LOCATED
- THE CORNER MONUMENT IS REPLACED OR MODIFIED IN ANY WAY
- THE REFERENCE TIES IN AN EXISTING PUBLIC RECORD ARE INCORRECT OR MISSING

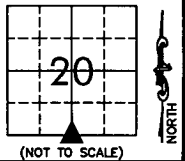
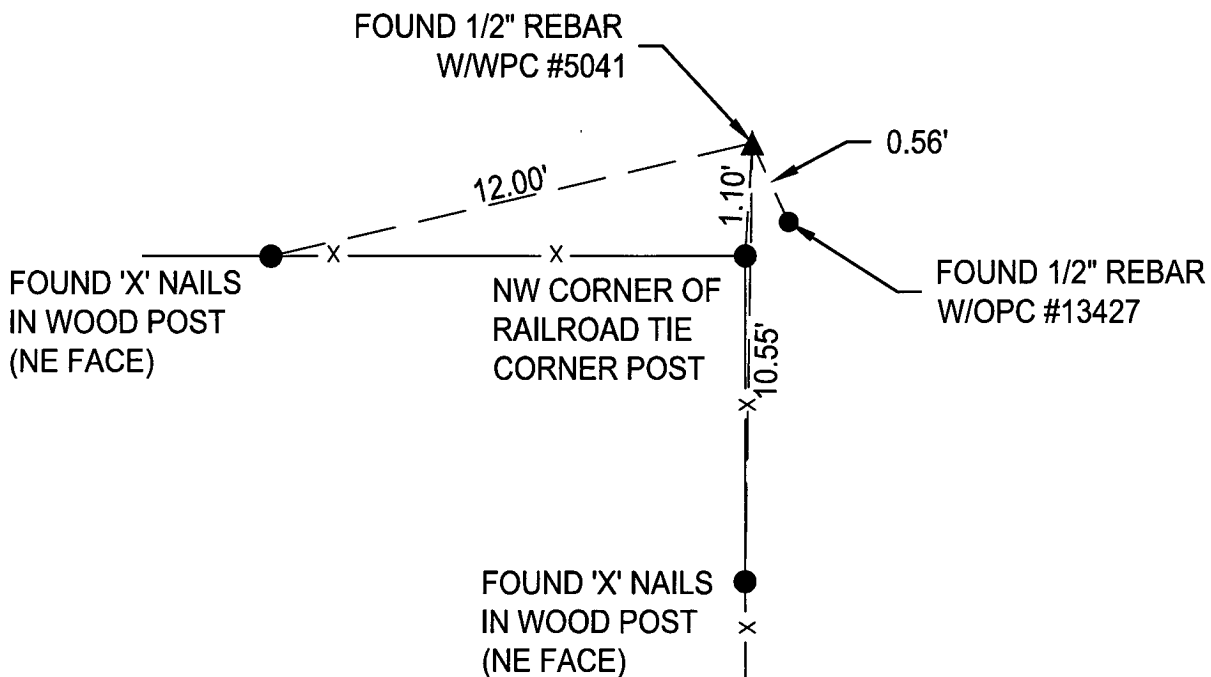
DESCRIPTION OF ORIGINAL AND SUBSEQUENT SURVEYS REFERENCING THIS CORNER LOCATION:

1. PREVIOUS TIE FROM NORTHLINE SURVEYORS FILED IN BK 2006, PG 1976
2. SURVEYS REFERENCING THIS CORNER: 2 UNRECORDED SURVEYS DATED 01/22/1982, SURVEY BK 2003-PG 5113, PARCEL G BK 2003-PG 6576, AND SURVEY BK 2007-PG 3616
3. CORNER WAS USED FOR PLAT OF SURVEY IN THE SOUTH HALF OF THE SOUTHEAST QUARTER OF THE SOUTHWEST QUARTER OF SECTION 20. MCCLURE ENGINEERING PROJECT MAD-2715008

DESCRIPTION OF CORNER FOUND OR A DETAILED STATEMENT OF THE METHOD USED TO ESTABLISH / REESTABLISH THIS CORNER:

1. FOUND 1/2" REBAR WITH WHITE PLASTIC CAP #5041, ONE FOOT AWAY FROM FENCE CORNER AT SURFACE. ALSO FOUND 1/2" REBAR WITH ORANGE PLASTIC CAP #13427, EXPOSED 3", BY USING A PREVIOUS CERTIFICATE OF RECORD LOCATED IN MADISON COUNTY RECORDS AT BOOK 2006, PAGE 1976. ACCEPTED FOUND 1/2" REBAR WITH WHITE PLASTIC CAP 5041 AS SECTION CORNER BASED ON ESTABLISHED SENIORITY OF SIMILAR MONUMENTS IN THE AREA. THE NEWER MONUMENT WAS NOT TIED OUT BY THE ESTABLISHING SURVEYOR. THE RECORDED TIE DID NOT PROVIDE DESCRIPTIVE NARRATIVE, ANY EXPLANATION FOR THE PROPAGATION OF THE CORNER, OR THE ESTABLISHMENT METHOD.

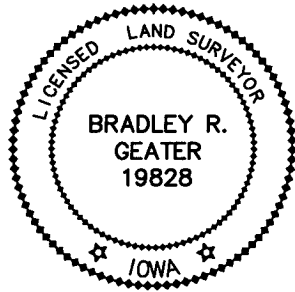
SKETCH OF THE MONUMENT AND ITS ACCESSORIES:



(NOT TO SCALE)

MCCLURE
ENGINEERING CO.
building strong communities.

1360 NW 121ST STREET
CLIVE, IOWA 50325
515-964-1229
fax 515-964-2370



I HEREBY CERTIFY THAT THIS LAND SURVEYING DOCUMENT WAS PREPARED AND THE RELATED WORK WAS PERFORMED BY ME OR UNDER MY DIRECT PERSONAL SUPERVISION AND THAT I AM A DULY LICENSED LAND SURVEYOR UNDER THE LAWS OF THE STATE OF IOWA.

SIGNATURE: *Bradley R. Geater* DATE: 4/6/2015
BRADLEY R. GEATER

MY LICENSE RENEWAL DATE IS DECEMBER 31, 2015

PAGES OR SHEETS COVERED BY THIS SEAL: THIS SHEET

DATE SURVEYED: 03/25/2015

DRAWING PATH: N:\Projects\MAD 2715008\Dwgs\Survey
\Plats of Survey

CORNERS TO BE INDEXED

CORNER	SEC.	TWP.	RGE.
S 1/4 COR	20	75	26
N 1/4 COR	29	75	26