



Document 2015 863

Book 2015 Page 863 Type 06 043 Pages 1

Date 4/07/2015 Time 12:41 PM

Rec Amt \$7.00

INDX
ANNO
SCAN
CHEK

LISA SMITH, COUNTY RECORDER
MADISON COUNTY IOWA

PREPARED BY & RETURN TO: BRADLEY R. GEATER, PLS / MCCLURE ENGINEERING COMPANY / 1360 NW 121ST STREET, CLIVE, IA 50325 / 515-964-1229

U.S. PUBLIC LAND SURVEY CORNER CERTIFICATE

OF LAND SURVEY MONUMENT SITUATED IN SECTION 20, TOWNSHIP 75, RANGE 26 WEST OF THE FIFTH PRINCIPAL MERIDIAN, MADISON COUNTY, IOWA. PREVIOUSLY RECORDED IN BK 2006-PG 1978 COUNTY RECORDER'S OFFICE.

REASON FOR PREPARING THIS CERTIFICATE:

- THERE IS NO CERTIFICATE FOR THE CORNER ON FILE WITH THE RECORDER OF THE COUNTY IN WHICH THE CORNER IS LOCATED
- THE SURVEYOR IN RESPONSIBLE CHARGE OF THE LAND SURVEYING ACCEPTS A CORNER POSITION WHICH DIFFERS FROM THAT SHOWN IN THE PUBLIC RECORDS OF THE COUNTY IN WHICH THE CORNER IS LOCATED
- THE CORNER MONUMENT IS REPLACED OR MODIFIED IN ANY WAY
- THE REFERENCE TIES IN AN EXISTING PUBLIC RECORD ARE INCORRECT OR MISSING

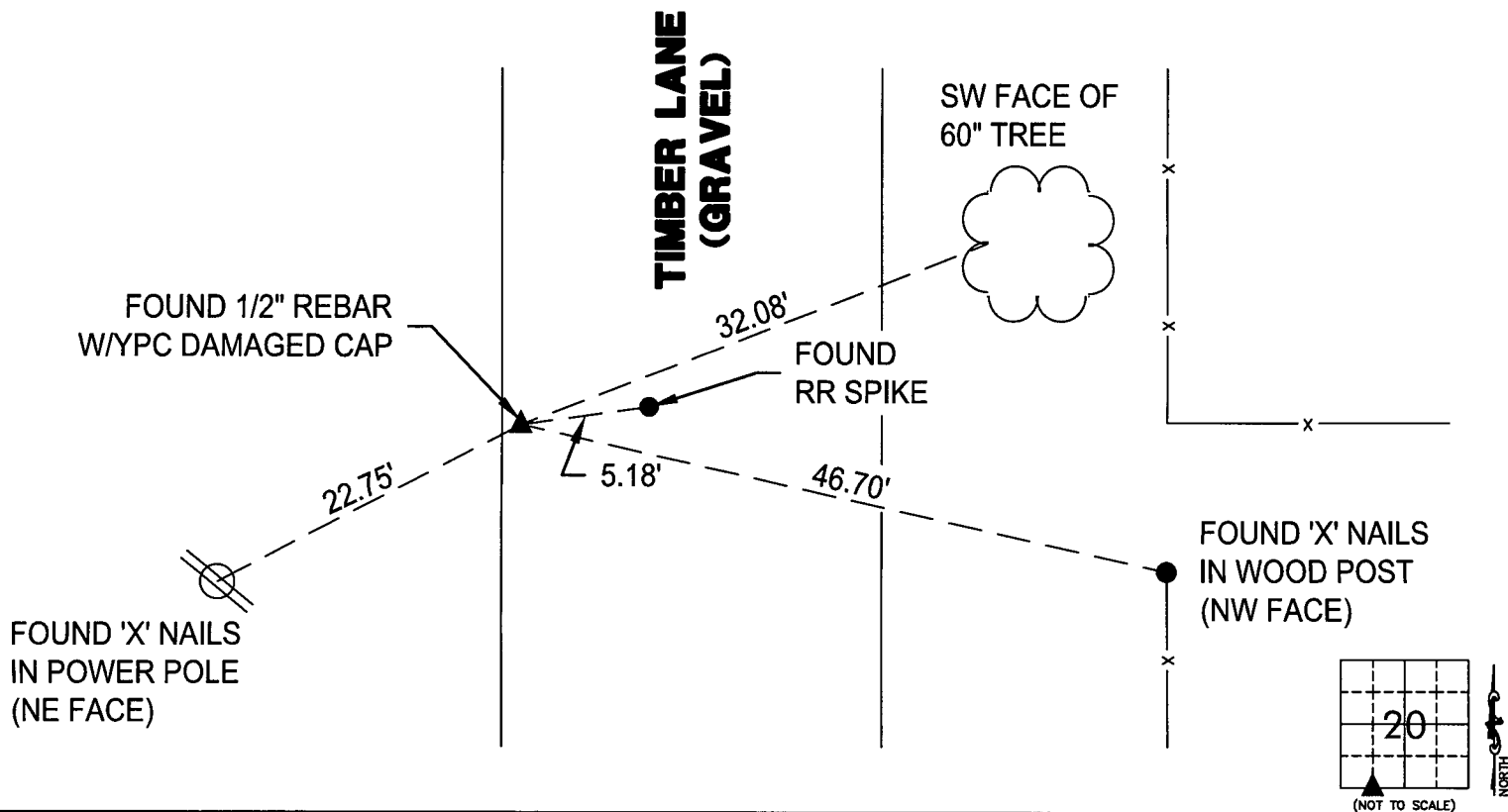
DESCRIPTION OF ORIGINAL AND SUBSEQUENT SURVEYS REFERENCING THIS CORNER LOCATION:

1. PREVIOUS TIES FROM NORTHLINE SURVEYORS FILED IN BK 2006, PG 1976 & BOLDMAN LAND SURVEYING IN BOOK 2003, PAGE 5569
2. SURVEYS REFERENCING THIS CORNER: 2 UNRECORDED SURVEYS DATED 01/22/1982, PARCEL F BK 2003-PG 5279, AND SURVEY BK 2007-PG 3616
3. CORNER WAS USED FOR PLAT OF SURVEY IN THE SOUTH HALF OF THE SOUTHEAST QUARTER OF THE SOUTHWEST QUARTER OF SECTION 20. MCCLURE ENGINEERING PROJECT MAD-2715008

DESCRIPTION OF CORNER FOUND OR A DETAILED STATEMENT OF THE METHOD USED TO ESTABLISH / REESTABLISH THIS CORNER:

1. FOUND 1/2" REBAR WITH DAMAGED YELLOW PLASTIC CAP, 1.3' DEEP & LEANING EAST, BY USING AN UNRECORDED SURVEY FROM VANCE & HOCHSTETLER CONSULTING ENGINEERS DATED 01/22/1982, ALSO FOUND RAILROAD SPIKE, 0.2' DEEP, BY USING A PREVIOUS CERTIFICATE OF RECORD LOCATED IN MADISON COUNTY RECORDS AT BOOK 2006, PAGE 1978. PLUMBED FOUND 1/2" REBAR WITH DAMAGED YELLOW CAP AND ACCEPTED AS SECTION CORNER BASED ON SIMILAR FOUND MONUMENTS IN THE AREA FROM THE VANCE & HOCHSTETLER CONSULTING ENGINEERS. REBAR MONUMENT CLOSELY MATCHES PLATTED DIMENSIONS OF PREVIOUS PLAT OF SURVEY BK 2007-PG 3616. RAILROAD SPIKE IS A CONVENIENT MONUMENT DISCARDING THE OTHER PREVIOUS SURVEYING MONUMENTS AND ACTIVITY IN THE AREA.

SKETCH OF THE MONUMENT AND IT'S ACCESSORIES:



McCLURETM
ENGINEERING CO.
building strong communities.

1360 NW 121ST STREET
CLIVE, IOWA 50325
515-964-1229
fax 515-964-2370

LICENSED LAND SURVEYOR
BRADLEY R. GEATER
19828
IOWA

I HEREBY CERTIFY THAT THIS LAND SURVEYING DOCUMENT WAS PREPARED AND THE RELATED WORK WAS PERFORMED BY ME OR UNDER MY DIRECT PERSONAL SUPERVISION AND THAT I AM A DULY LICENSED LAND SURVEYOR UNDER THE LAWS OF THE STATE OF IOWA.

SIGNATURE: *Bradley R. Geater* DATE: 4/6/15
BRADLEY R. GEATER

MY LICENSE RENEWAL DATE IS DECEMBER 31, 2015
PAGES OR SHEETS COVERED BY THIS SEAL: THIS SHEET

DATE SURVEYED: 03/25/2015

DRAWING PATH: N:\Projects\MAD 2715008\Dwgs\Survey
\Plats of Survey

CORNERS TO BE INDEXED			
CORNER	SEC.	TWP.	RGE.
SW COR SE 1/4, SW 1/4	20	75	26
NW COR NE 1/4, NW 1/4	29	75	26