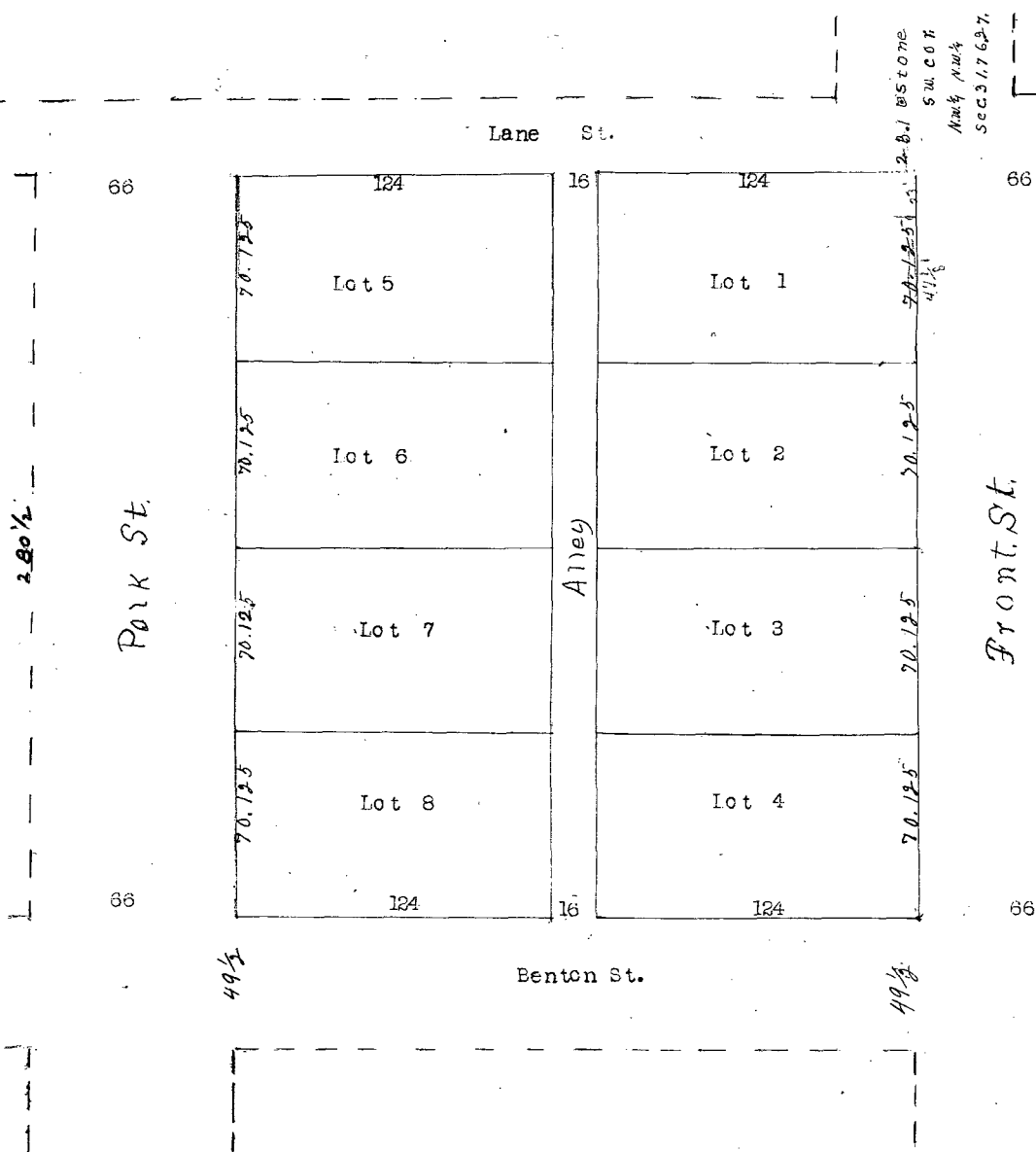


Plat of Block 20 Pitzer & Knight's Addition, to  
City of Winterset.



I hereby Certify that the above is a correct Plat of  
Block 20, Pitzer & Knight's Add. to the City of  
Winterset as surveyed by me May 9th 1902 and that  
it is in accordance with present Plat filed in the  
Co. Auditors office except that the alley is 16 feet wide  
instead of 16½ and runs North & South instead of  
E. & W., and lots are 124, by 70. 125 feet instead of  
132 by 66 and Front Polk St. & Front St. instead of  
Lane St & Benton St. as previously Platted.

W. R. Stewart  
Co. Surveyor

For Notes to Plat see Town Lot Deed Record No. 11 Page 246.  
Filed For Record July 3<sup>rd</sup> A.D. 1906 at 10:45 O'clock A.M.

E.F. Connoran, Recorder.  
By Irene E. Connoran,  
Deputy.