



EARLHAM

AVE

145

80

145

20

148 1/2

80

1

10

1

2

9

2

3

8

3

4

7

4

5

6

5

145

80

145

20

148 1/2

80

st.

MAPLE

CHERRY

20

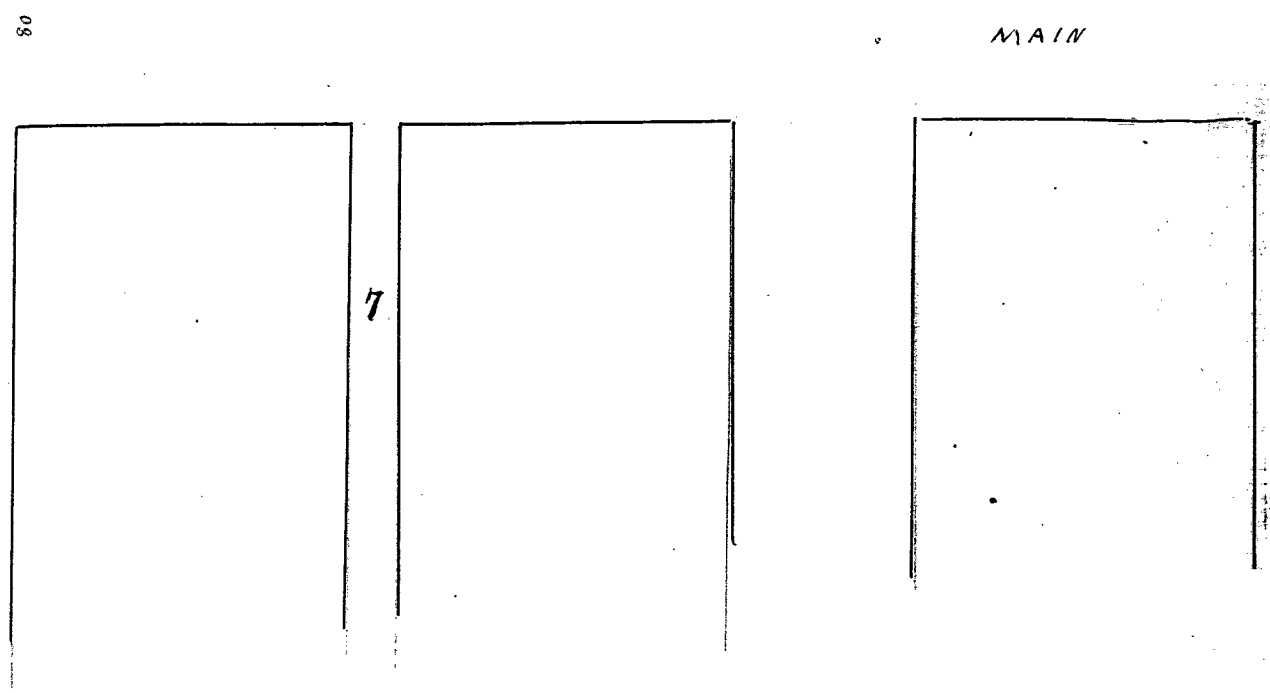
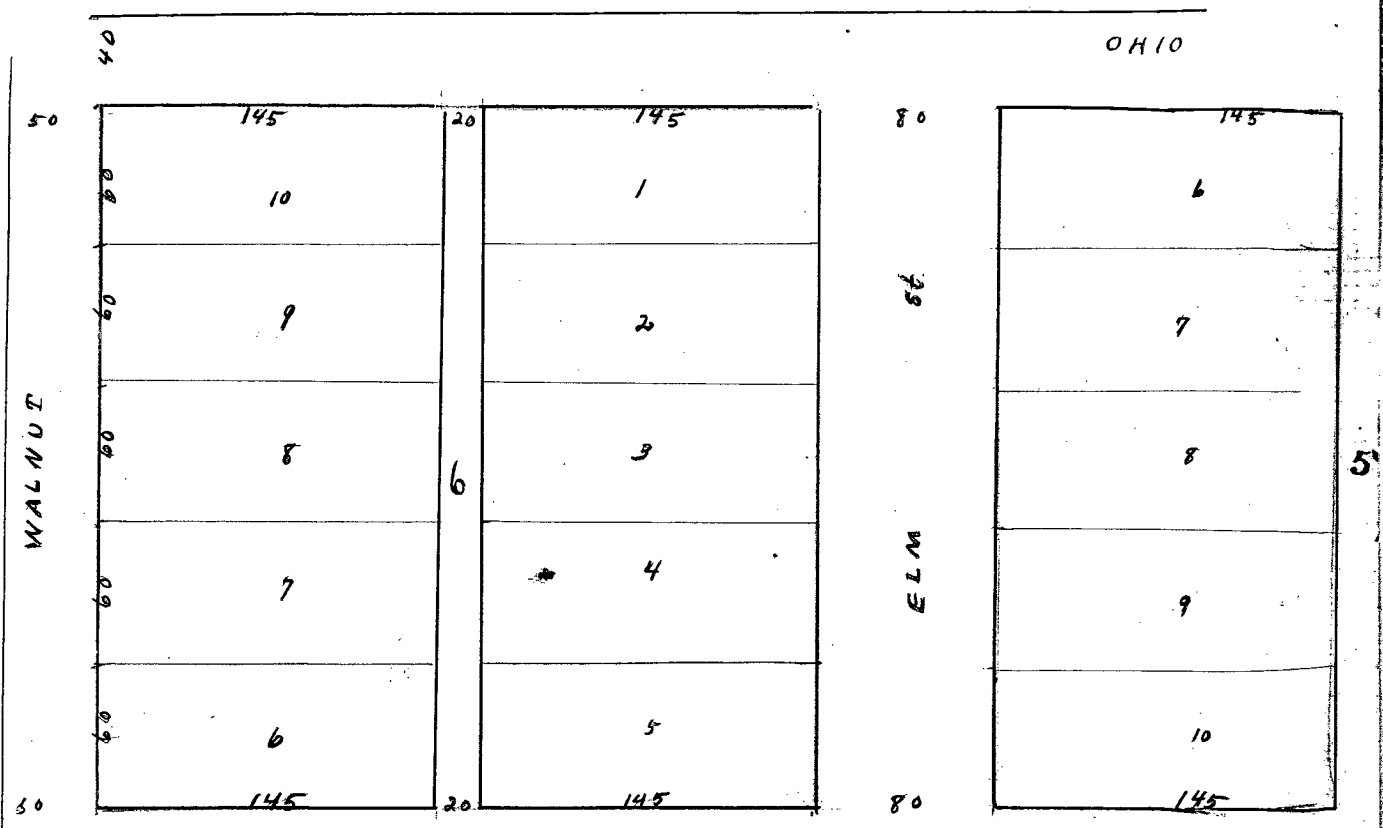
2

20

11

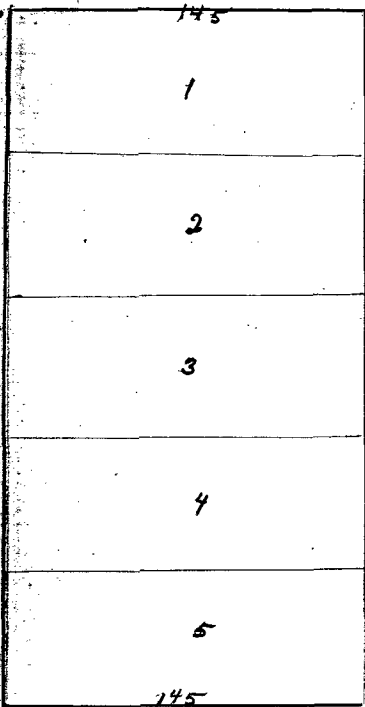
12

ORIGINAL



EARLHAM ~

ST

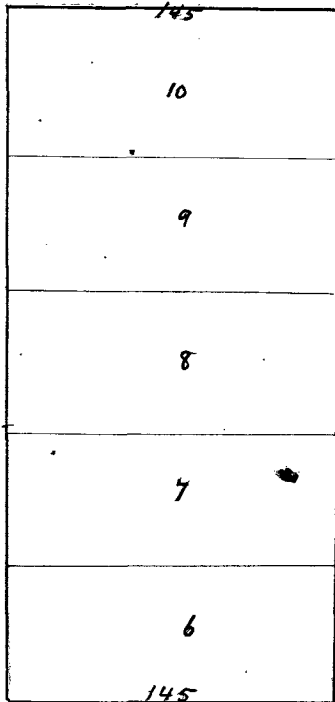


80

ST

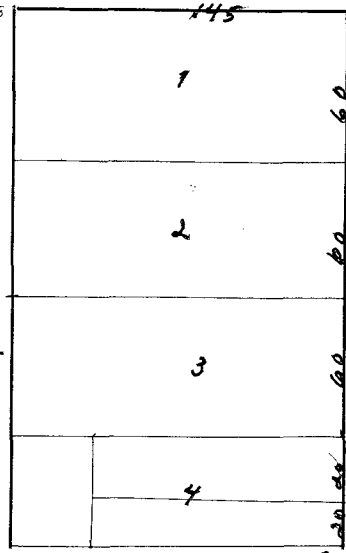
LOCUST

80



20

4

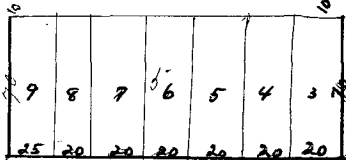


100

ST

CHESTNUT

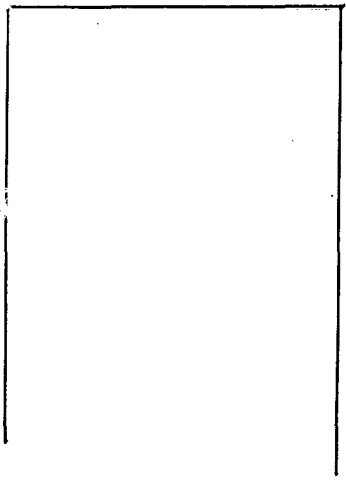
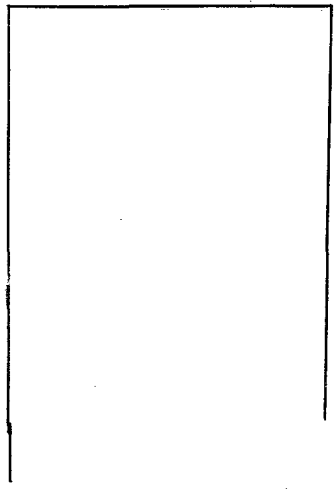
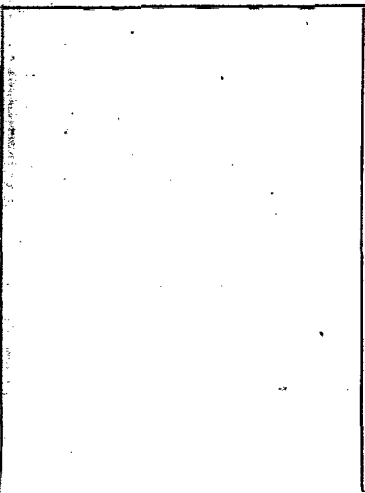
SUB-DIV. OF LOTS 4-7



100

80

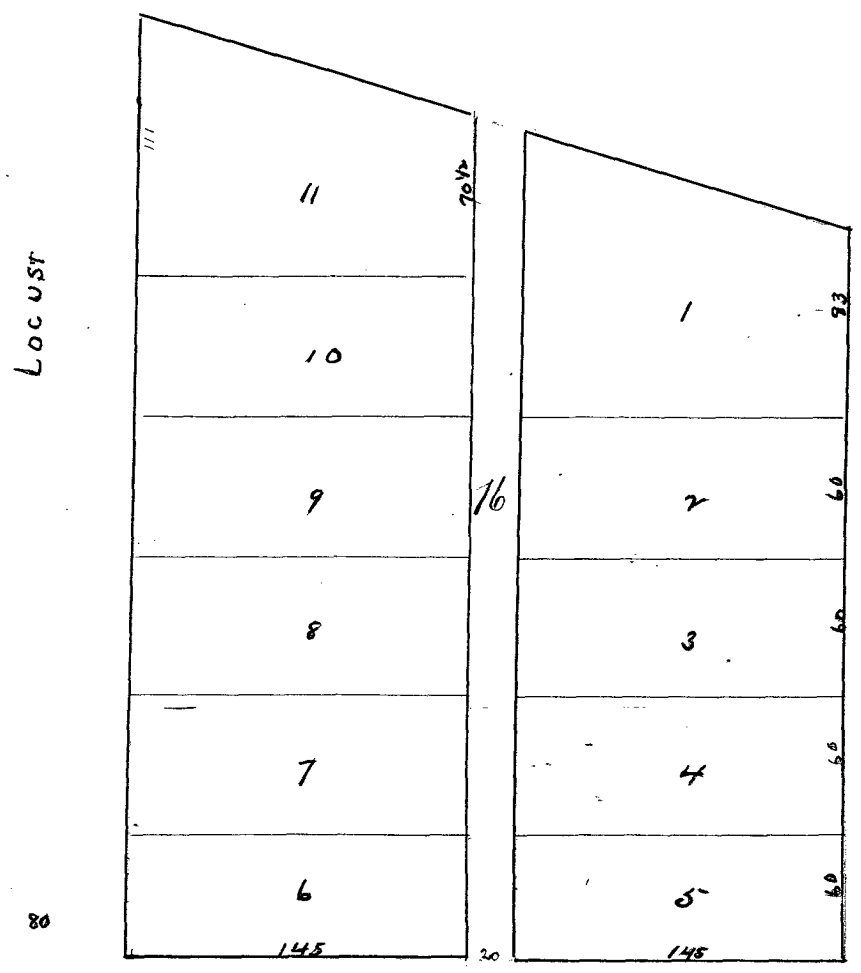
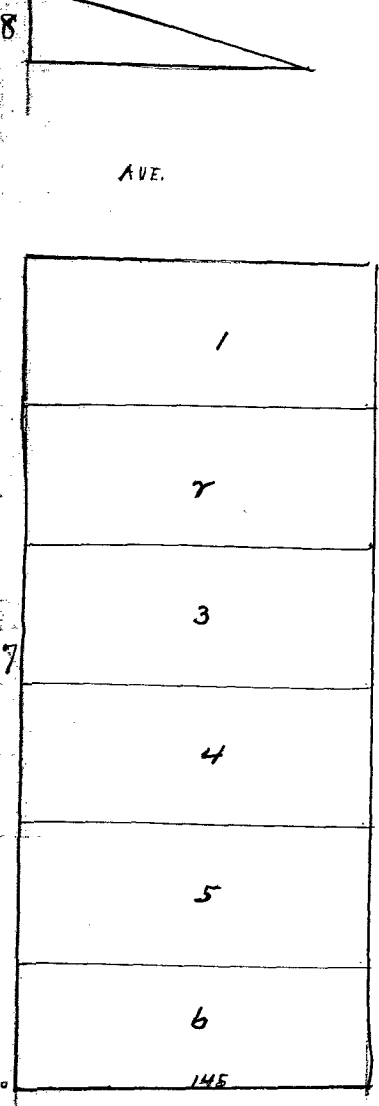
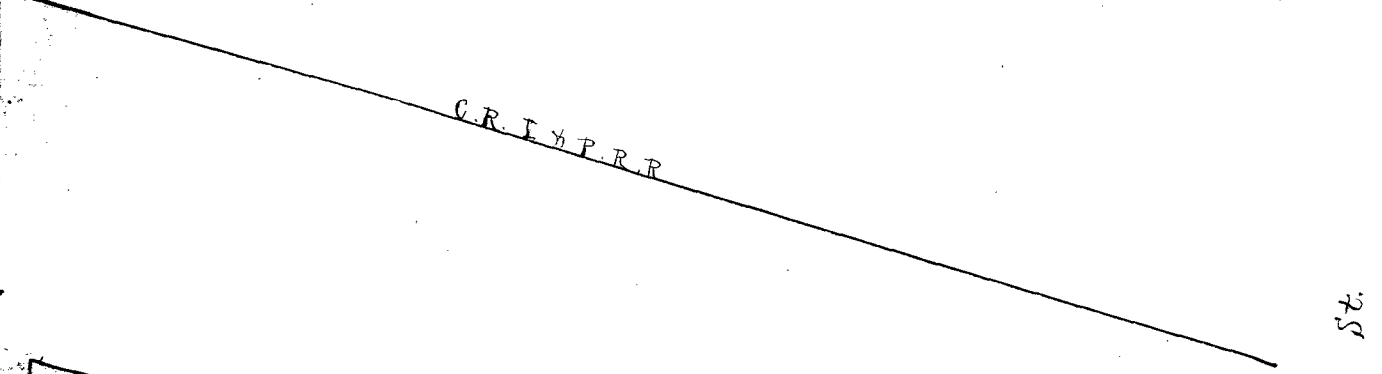
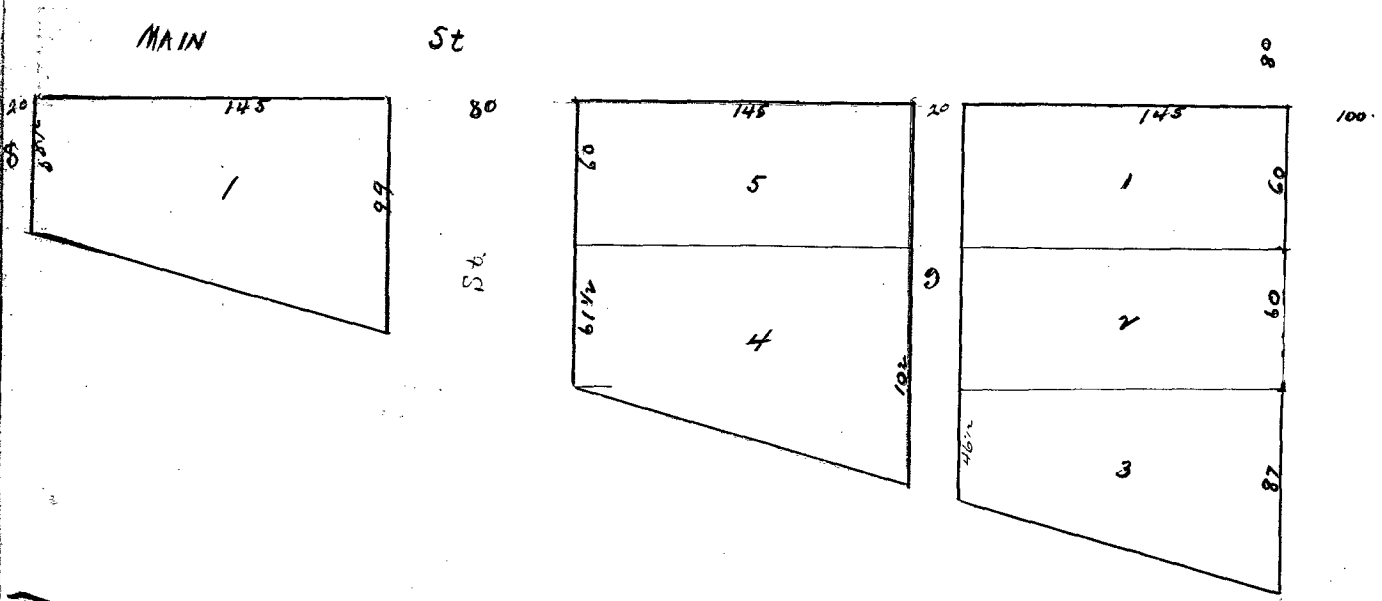
ST



9

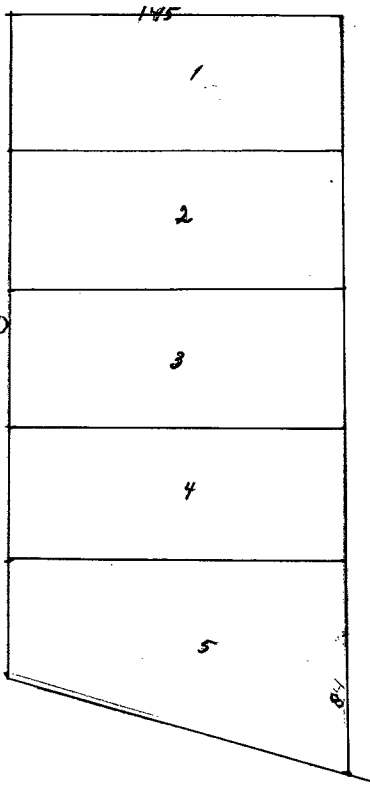
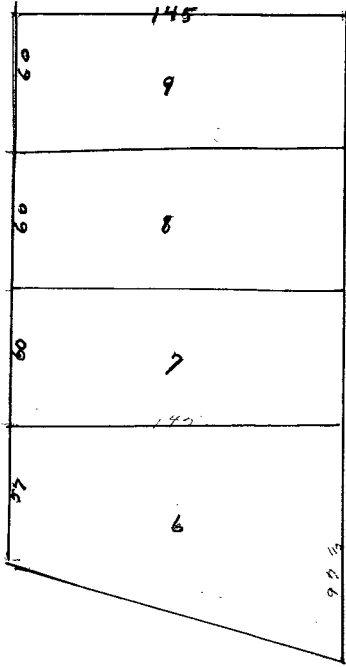


EARHAM

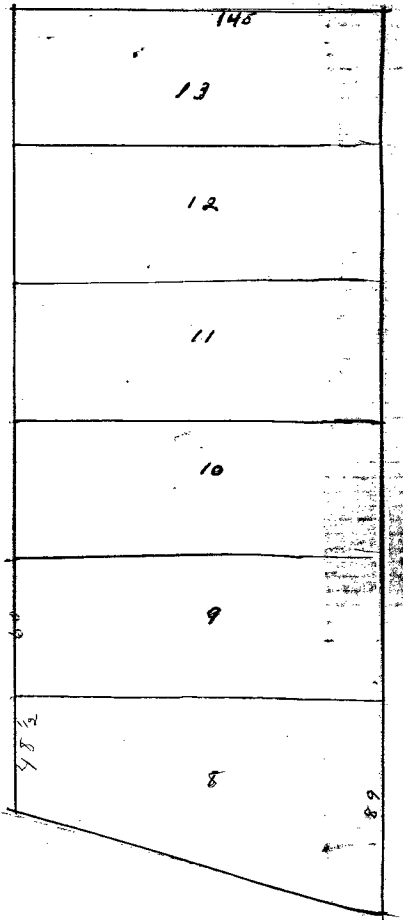


MAIN

100'



80

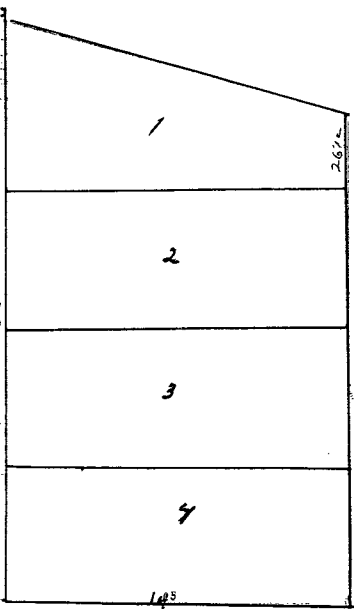
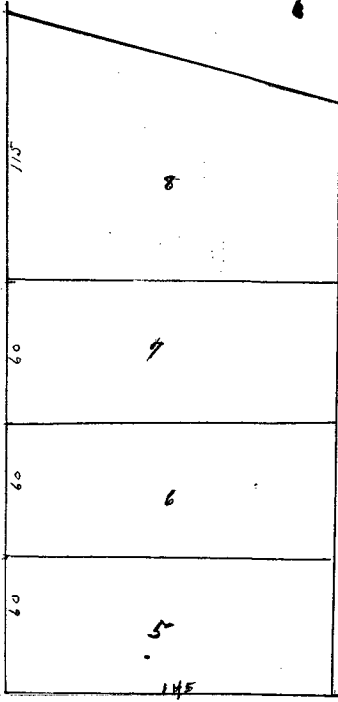


51  
5

57

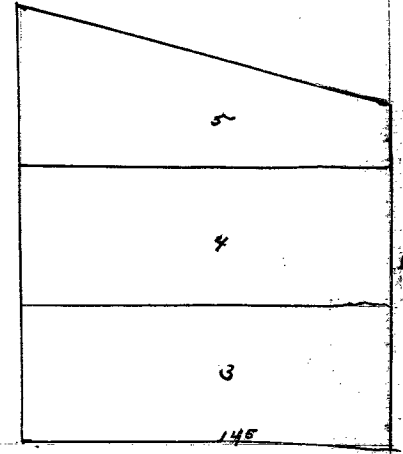
C. R. I. & P. R. R.

CHESTNUT



15

SYCAMORE



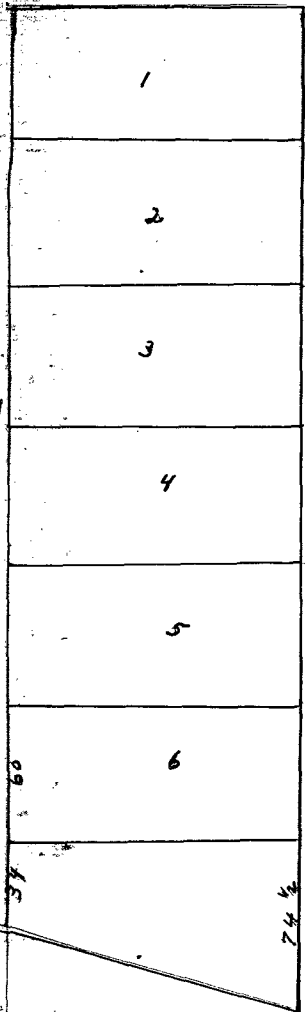
80

10 WA

100

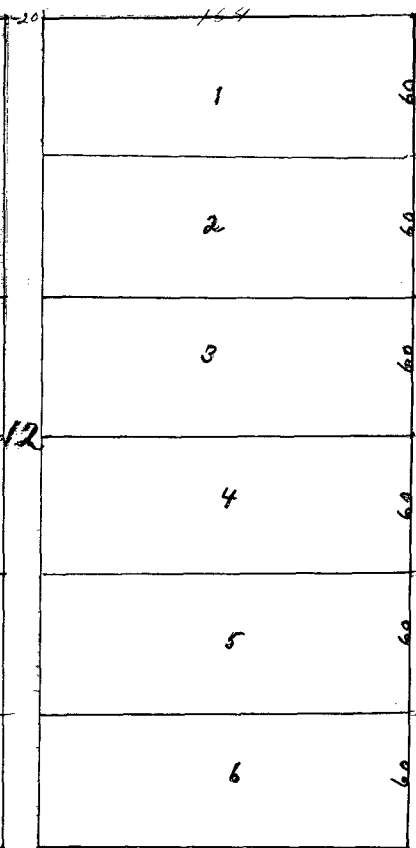
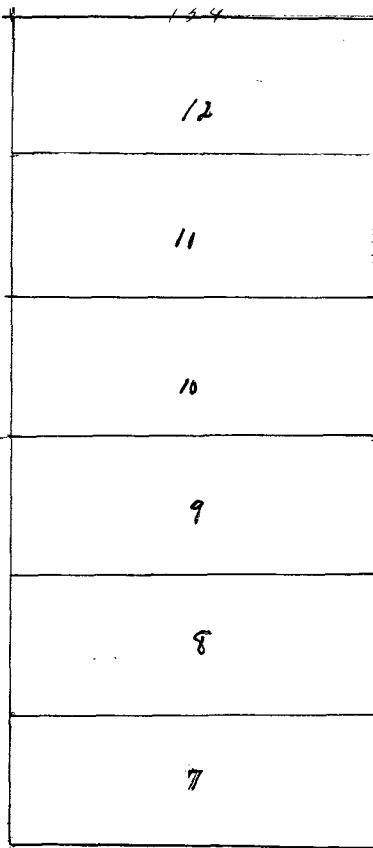
S<sup>2</sup>

80



S<sup>6</sup>.

MAPLE



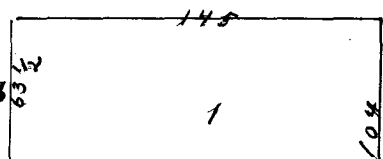
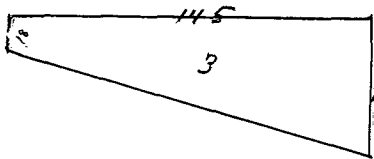
80

S<sup>7</sup>.

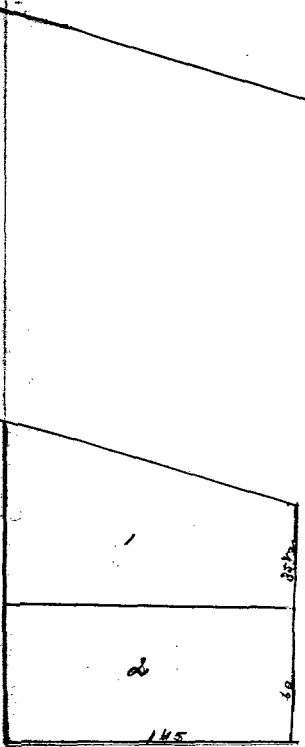
RAILROAD

AUE

80

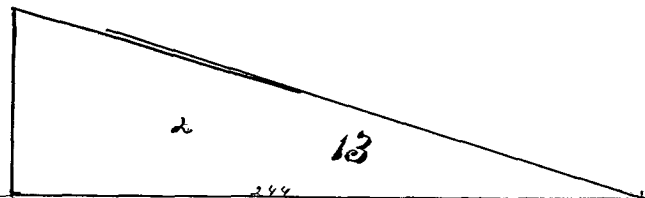


CHERRY



All south of R.R. of this street  
Vacated May 3<sup>rd</sup> 1881

80



All south of A.P. of this  
80 vacated May 3<sup>rd</sup> 1881

80

S<sup>4</sup>.  
This St. all east of steamway st vacated May 3<sup>rd</sup> 1881.