

INDX ✓
ANNO
SCAN
CHEK

LISA SMITH, COUNTY RECORDER
MADISON IOWA

07-134s
VANCE & HOCHSTETLER, P.C., CONSULTING ENGINEERS, WINTERSSET, IOWA (515) 462-3995
CHARLES T. VANCE, 110 West Green St., Winterset, Iowa, 50273
JAMES M HOCHSTETLER, 110 West Green St., Winterset, Iowa 50273

UNITED STATES PUBLIC LAND SURVEY CORNER CERTIFICATE

OF
Land Survey Monuments situated in Section 12 Township 74 N Range
27 W of the Fifth Principal Meridian, MADISON County, Iowa.
Previously recorded in _____ in County Recorder's Office.
(book, page, document number, etc.)

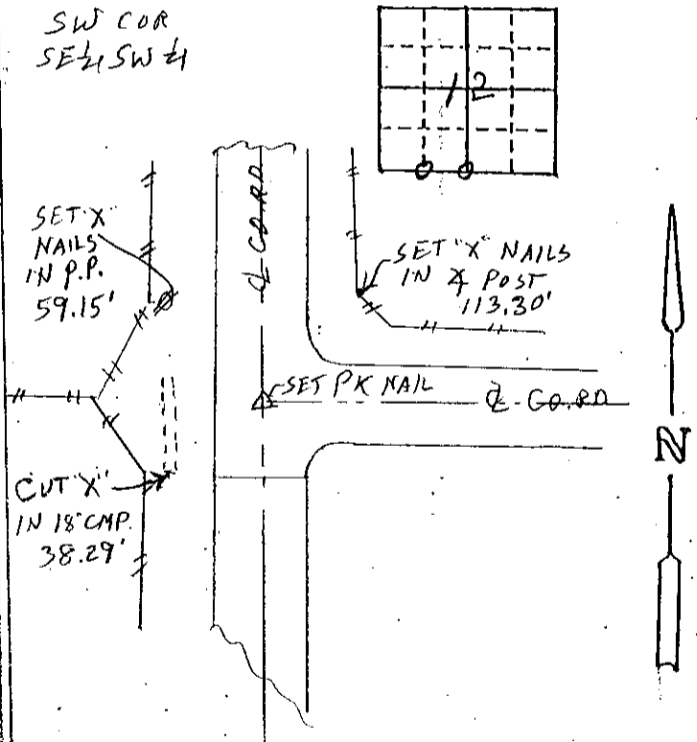
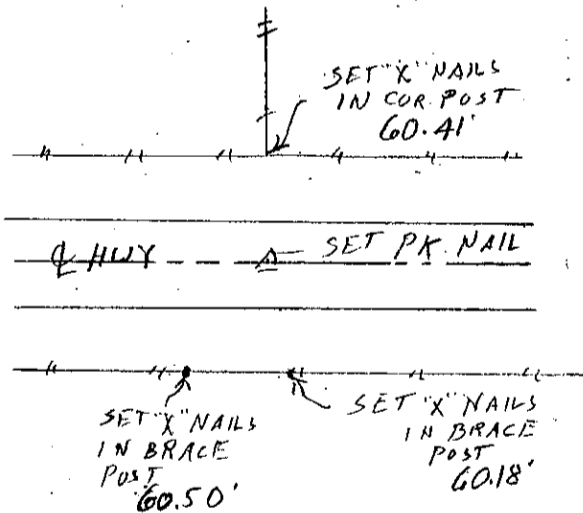
(Show reason for preparing this certificate, the evidence and detailed procedures used in establishing the the corner positions and monumentation found or placed.)

Monument Description and Remarks: S¹/₄ Cor. - Set PK Nail in centerline of
asphalt surface. Road plan S-1920 in 1951 indicated that the
center line of the road followed an existing property line fence and
showed a fence North and South at this point.
SW Cor SE¹/₄ SW¹/₄ - Set PK Nail at intersection of ϕ of road from
North and East which was noted on plan S-1920 as the corner.

PLAN - VIEW

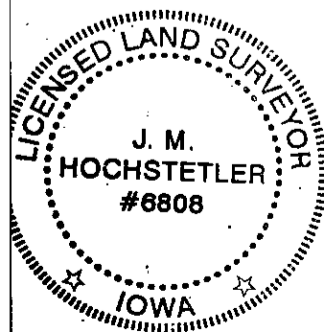
(Show a minimum of three reference ties to durable physical objects, relevant monuments and physical conditions that will enable recovery of the corner.)

S¹/₄ Cor



List Corners to be Indexed

Corners	Section	Twp	Range
S ¹ / ₄ COR	12	74N	27W
SW COR SE ¹ / ₄ SW ¹ / ₄	12	74N	27W



I hereby certify that this land surveying document was prepared and the related survey work was performed by me or under my direct personal supervision and that I am a duly licensed Land Surveyor under the laws of the State of Iowa.
J.M. Hochstetler
J.M. HOCHSTETLER
License number 6808 Date 10/30/07
My license renewal date is December 31, 2017
Pages or sheets covered by this seal: 1