

REC \$ 5<sup>00</sup>  
AUD \$  
R.M.F. \$ 1<sup>00</sup>

FILED NO. 005552  
BOOK 2002 PAGE 5557

2002 NOV 13 AM 11:05

COMPUTER	<input checked="" type="checkbox"/>
RECORDED	<input type="checkbox"/>
COMPARED	<input type="checkbox"/>

HICKI UTSLER  
RECORDER  
MADISON COUNTY, IOWA

VANCE & HOCHSTETLER, P.C., CONSULTING ENGINEERS, WINTERSSET, IOWA (515) 462-3995  
02-2195 CHARLES T. VANCE, 110 West Green St., Winterset, Iowa, 50273  
JAMES M HOCHSTETLER, 110 West Green St., Winterset, Iowa 50273

### UNITED STATES PUBLIC LAND SURVEY CORNER CERTIFICATE

Land Survey Monuments situated in Section 24, Township 77 N., Range 27 W, of the Fifth Principal Meridian, MADISON County, Iowa.  
Previously recorded in \_\_\_\_\_ in County Recorder's Office.  
(book, page, document number, etc.)

(Show reason for preparing this certificate, the evidence and detailed procedures used in establishing the the corner positions and monumentation found or placed.)

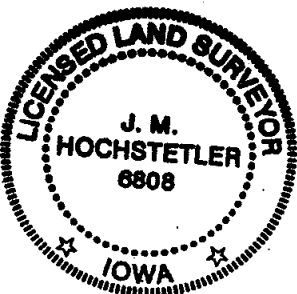
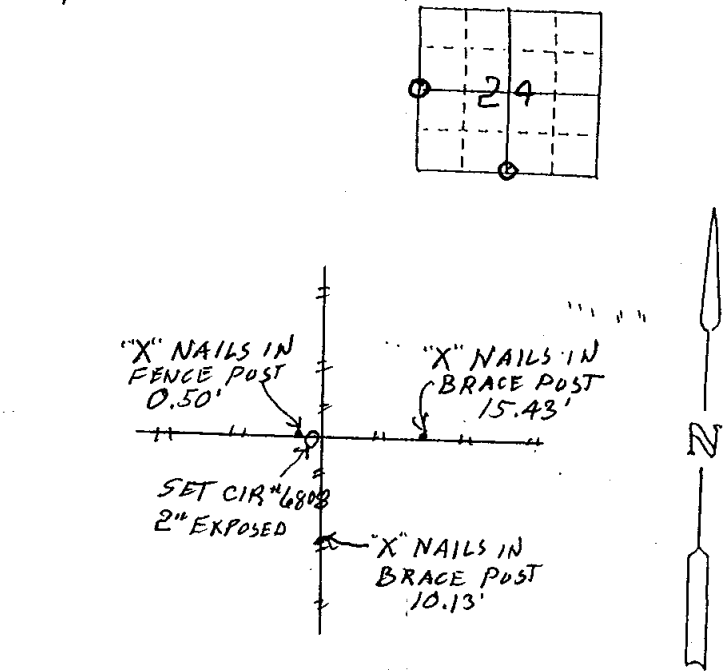
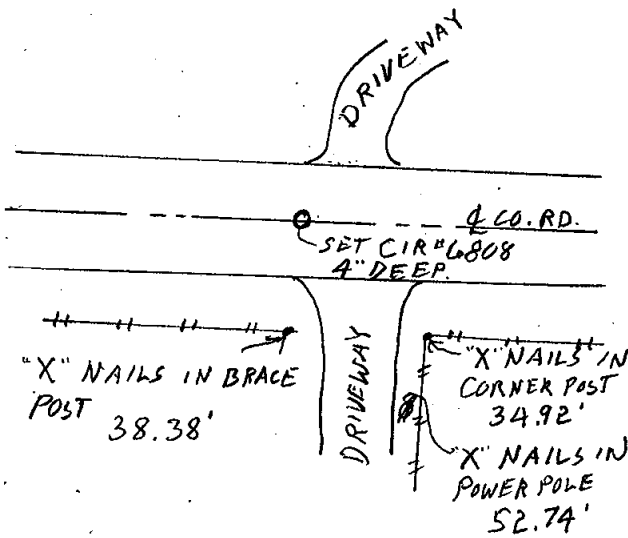
Monument Description and Remarks: S 1/4 COR. - Set yellow CIR #6808 at midpoint between found SW COR & SE COR and split of Road Row Fences.  
W 1/4 COR - Set yellow CIR #6808 at intersection of 4 old property line fences.

### PLAN - VIEW

(Show a minimum of three reference ties to durable physical objects, relevant monuments and physical conditions that will enable recovery of the corner.)

S 1/4 COR.

W 1/4 COR.



I hereby certify that this land surveying document was prepared and the related survey work was performed by me or under my direct personal supervision and that I, am a duly licensed Land Surveyor under the laws of the State of Iowa.

*J. M. Hochstetler*  
J.M. HOCHSTETLER  
License number 6808 Date 11/7/02  
My license renewal date is December 31, 2003  
Pages or sheets covered by this seal: 1

#### List Corners to be Indexed

Corners	Section	Twp	Range
S 1/4 COR.	24	77N	27W
W 1/4 COR.	24	77N	27W