



Document 2025 687

Book 2025 Page 687 Type 06 043 Pages 1
Date 3/24/2025 Time 10:30:51AM
Rec Amt \$7.00

INDX
ANNO
SCAN

BRANDY MACUMBER, COUNTY RECORDER
MADISON COUNTY IOWA

CHEK

PREPARED BY AND RETURN TO: **ABACI CONSULTING INC.**, 3000 SE GRIMES BLVD, STE 800, GRIMES, IA 50111, PH.(515)986-5048

UNITED STATES PUBLIC LAND SURVEY CORNER CERTIFICATE

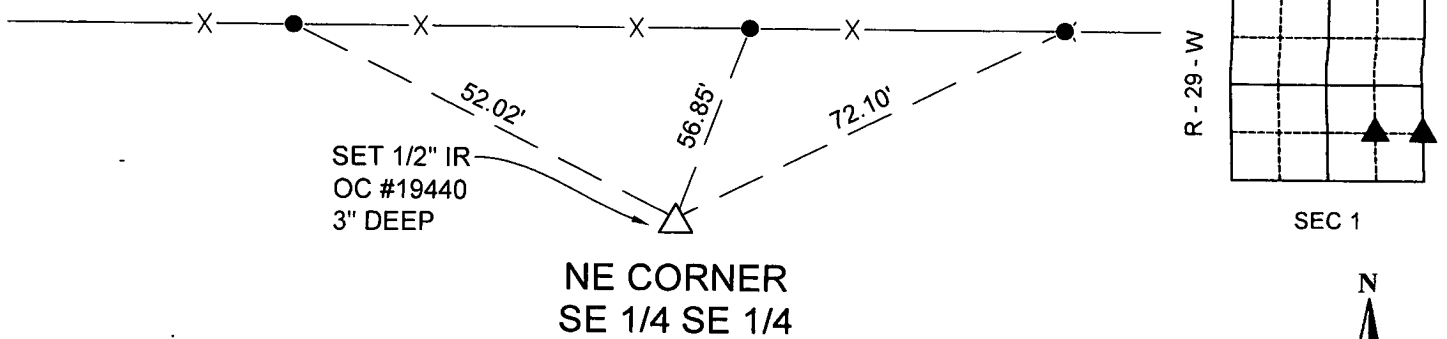
OF
LAND SURVEY MONUMENTS SITUATED IN SECTION 1, TOWNSHIP 74, RANGE 29, of the Fifth Principal Meridian, MADISON County, Iowa.
Previously recorded in N/A in County Recorder's Office.

Monument Description & Remarks: NE CORNER SE 1/4 SE 1/4 - SET 1/2" IR OC #19440 - 3" DEEP - FROM A BREAKDOWN OF SECTION 1, TOWNSHIP 74 NORTH, 29 WEST OF THE 5TH P.M.

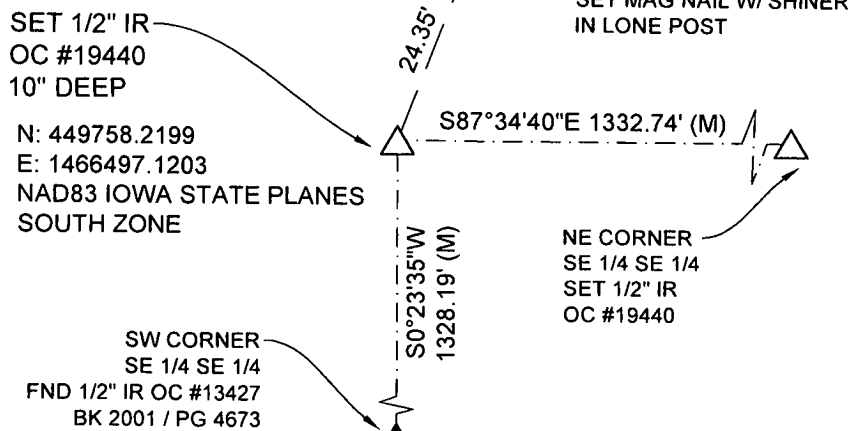
NW CORNER SE 1/4 SE 1/4 - SET 1/2" IR OC #19440 - 10" DEEP FROM A BREAKDOWN OF SECTION 1, TOWNSHIP 74 NORTH, RANGE 29 WEST OF THE 5TH P.M.

PLAN VIEW

NOTE: ALL TIES SET SPIKE IN TOP FENCE POSTS



NE CORNER
SE 1/4 SE 1/4



NW CORNER
SE 1/4 SE 1/4



#24259

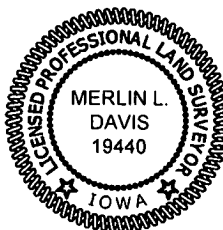
I HEREBY CERTIFY THAT THIS SURVEYING DOCUMENT WAS PREPARED AND THE RELATED WORK WAS PERFORMED BY ME OR UNDER MY DIRECT PERSONAL SUPERVISION AND THAT I AM A DULY LICENSED PROFESSIONAL LAND SURVEYOR UNDER THE LAWS OF THE STATE OF IOWA.

SIGNATURE *Merlin L. Davis* DATE *3/19/2025*
MERLIN L. DAVIS

PRINTED OR TYPED NAME:
IOWA LIC. NO. 19440
MY LICENSE RENEWAL DATE IS DECEMBER 31, 2026

THIS SHEET ONLY

PAGES COVERED BY THIS SEAL:



CORNERS TO BE INDEXED

CORNER	SECTION	TWP	RANGE
NE COR. SE 1/4 SE 1/4	1	74N	29W
NW COR. SW 1/4 SW 1/4	6	74N	28W
NW COR. SE 1/4 SE 1/4	1	74N	29W