



Document 2025 1316

Book 2025 Page 1316 Type 06 043 Pages 1
Date 5/29/2025 Time 11:56:26AM
Rec Amt \$7.00

INDX
ANNO
SCAN
CHEK

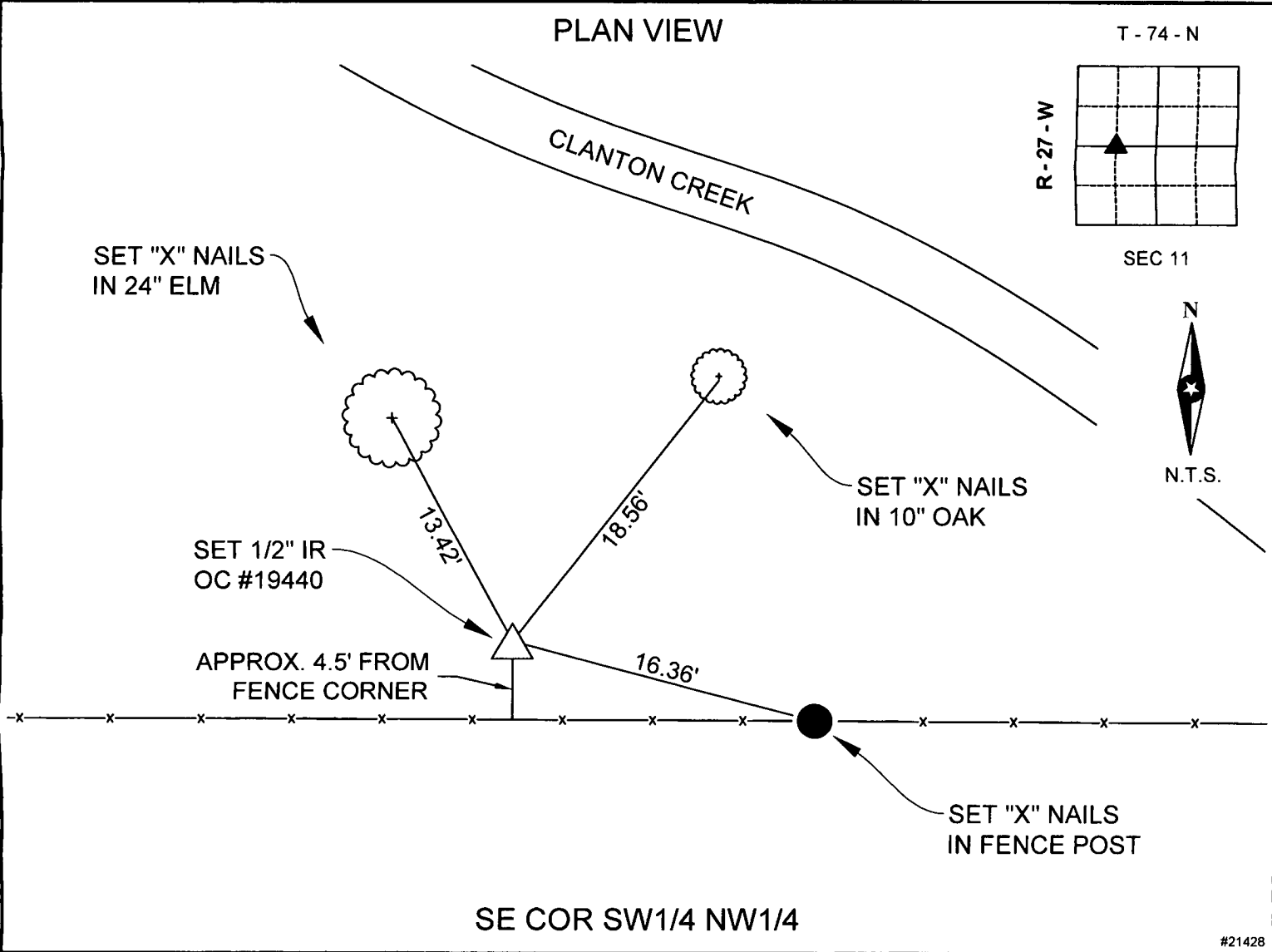
BRANDY MACUMBER, COUNTY RECORDER
MADISON COUNTY IOWA

PREPARED BY AND RETURN TO: **ABACI CONSULTING INC.**, 3000 SE GRIMES BLVD, STE 800, GRIMES, IA 50111, PH.(515)986-5048

UNITED STATES PUBLIC LAND SURVEY CORNER CERTIFICATE

OF
LAND SURVEY MONUMENTS SITUATED IN SECTION 11, TOWNSHIP 74N, RANGE 27W, of the Fifth Principal Meridian, MADISON County, Iowa.
Previously recorded in N/A in County Recorder's Office.

Monument Description & Remarks: SE CORNER OF THE SOUTHWEST QUARTER (SW1/4) OF THE NORTHWEST QUATER (NW1/4), SET 1/2" IR ORANGE CAP #19440, 4.5' NORTH OF FENCE CORNER. NO PREVIOUS TIES ON RECORD.



I HEREBY CERTIFY THAT THIS SURVEYING DOCUMENT WAS PREPARED AND THE RELATED WORK WAS PERFORMED BY ME OR UNDER MY DIRECT PERSONAL SUPERVISION AND THAT I AM A DULY LICENSED PROFESSIONAL LAND SURVEYOR UNDER THE LAWS OF THE STATE OF IOWA.

SIGNATURE Merlin L. Davis DATE 5/29/2025

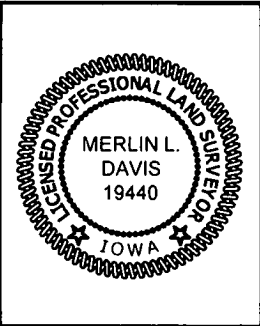
PRINTED OR TYPED NAME: MERLIN L. DAVIS

IOWA LIC. NO. 19440

MY LICENSE RENEWAL DATE IS DECEMBER 31, 2026

THIS SHEET ONLY

PAGES COVERED BY THIS SEAL:



CORNERS TO BE INDEXED			
CORNER	SECTION	TWP	RANGE
SE COR SW1/4 NW1/4	11	74	27