



Prepared By: Michael James Hackett, Madison County Engineer's Office, 1105 E. Court Ave., Winterset, Ia. 50273, Tel. (515) 462-1136
Return To: Michael James Hackett, Madison County Engineer's Office, 1105 E. Court Ave., Winterset, Ia. 50273, Tel. (515) 462-1136

UNITED STATES PUBLIC LAND SURVEY CORNER CERTIFICATE
OF

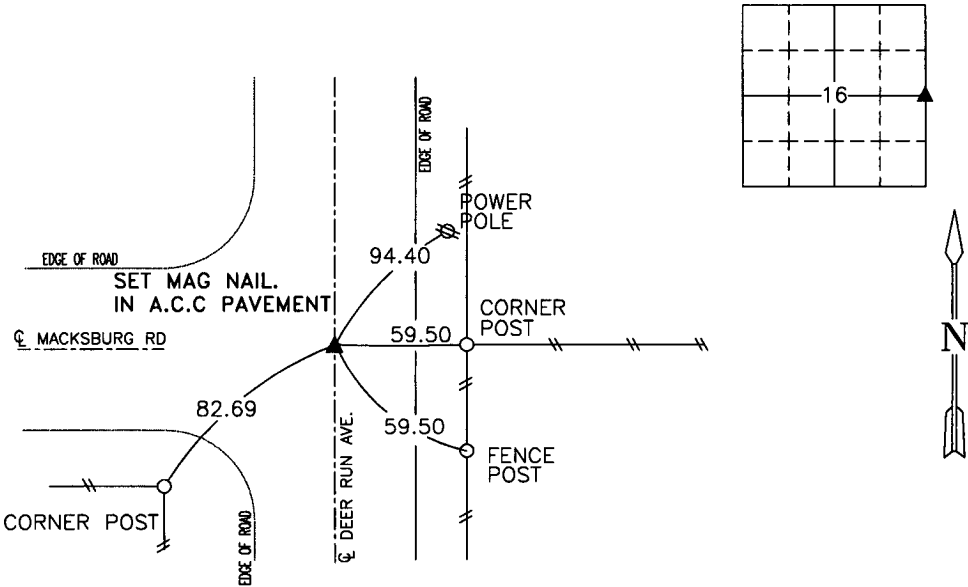
Land Survey Monuments situated in Section 16, Township 74 N, Range 29 W, of the Fifth Principal Meridian, Madison County, Iowa.
Previously recorded in Book 2021, Page 126 in County Recorder's Office.
(book, page, document number, etc.)

(Show reason for preparing this certificate, the evidence and detailed procedures used in establishing the corner positions and monumentation found or placed.)

Monument Description and Remarks: Previous monument was removed during county highway project
STP-S-C061(128)--5E-61. Set MAG nail in A.C.C. pavement. Established the corner position by using the existing
found monument, previous ties, and ties established construction. Accepted position.

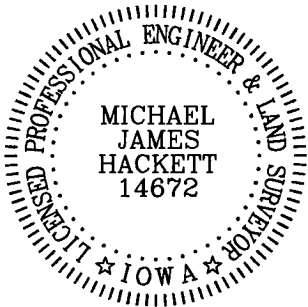
PLAN VIEW

(Show a minimum of three reference ties to durable physical objects, relevant monuments and physical conditions that will enable recovery of the corner.)



NE. COR., SE. 1/4, SEC. 16

NOTE: ALL TIES TO "X" NAILS UNLESS NOTED



I hereby certify that this land surveying document was prepared and the related survey work was performed by me or under my direct personal supervision and that I am a duly Licensed Land Surveyor under the laws of the State of Iowa.

Signed [Signature] Date 5/20/2025
Michael James Hackett

Iowa license number 14672.
My license renewal date is 12/31/2026.
Pages covered by this seal: 1.