



Document 2024 1753

Book 2024 Page 1753 Type 06 043 Pages 1  
Date 7/22/2024 Time 10:09:21AM  
Rec Amt \$7.00

INDX  
ANNO  
SCAN

BRANDY MACUMBER, COUNTY RECORDER  
MADISON COUNTY IOWA

CHEK

PREPARED BY AND RETURN TO: **ABACI CONSULTING INC.**, 3000 SE GRIMES BLVD, STE 800, GRIMES, IA 50111, PH.(515)986-5048

UNITED STATES PUBLIC LAND SURVEY CORNER CERTIFICATE

OF

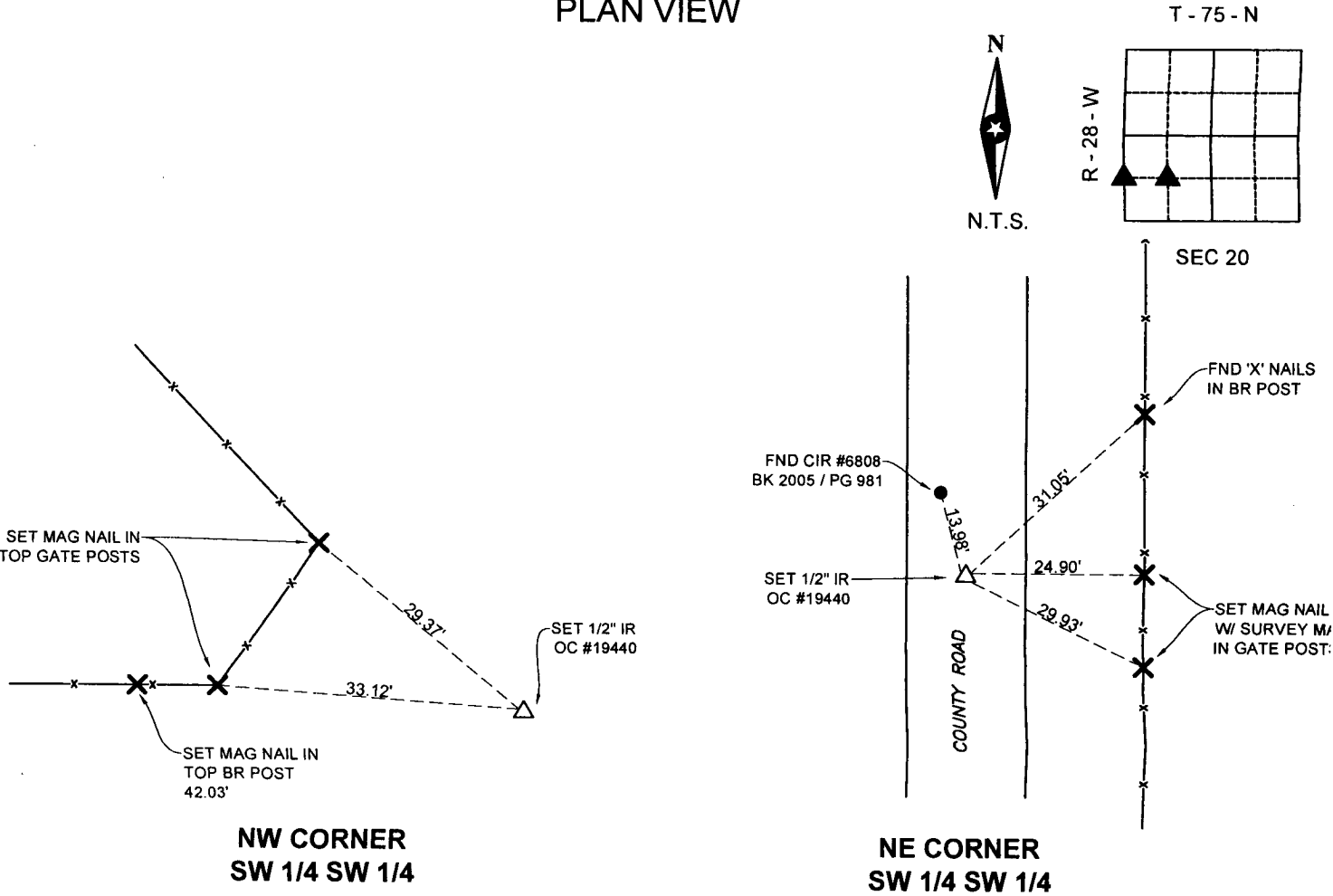
LAND SURVEY MONUMENTS SITUATED IN SECTION 20, TOWNSHIP 75N, RANGE 28W, of the Fifth Principal Meridian, MADISON County, Iowa.

Previously recorded in BK 2005 / PG 981 in County Recorder's Office.

Monument Description & Remarks: NW CORNER SW 1/4 SW 1/4 - SET 1/2" IR OC #19440 - NO TIES ON RECORD  
SET AT MIDPOINT BETWEEN SW CORNER AND FENCE CORNER AT THE W 1/4

NE CORNER SW 1/4 SW 1/4 - FOUND CIR #6808 WITH TIES RECORDED IN BOOK 2005 PAGE 981 - SET 1/2" IR OC  
ON THE CORRECTED POSITION OF THE SW 1/4 BREAKDOWN OF SECTION.

PLAN VIEW



#24140

I HEREBY CERTIFY THAT THIS SURVEYING DOCUMENT WAS PREPARED AND THE RELATED WORK WAS PERFORMED BY ME OR UNDER MY DIRECT PERSONAL SUPERVISION AND THAT I AM A DULY LICENSED PROFESSIONAL LAND SURVEYOR UNDER THE LAWS OF THE STATE OF IOWA.

SIGNATURE Merlin L. Davis DATE 7/17/24

PRINTED OR TYPED NAME: MERLIN L. DAVIS  
IOWA LIC. NO. 19440  
MY LICENSE RENEWAL DATE IS DECEMBER 31, 2024  
THIS SHEET ONLY

PAGES COVERED BY THIS SEAL:



CORNERS TO BE INDEXED

CORNER	SECTION	TWP	RANGE
NW COR. SW 1/4 SW 1/4	20	75N	28W
NE COR. SE 1/4 SE 1/4	19	75N	28W
NE COR. SW 1/4 SW 1/4	20	75N	28W