

RETURN TO: DANIELS LAND SURVEYING, 22470 18TH LANE, NEW VIRGINIA IA 50210 (515) 577-2583

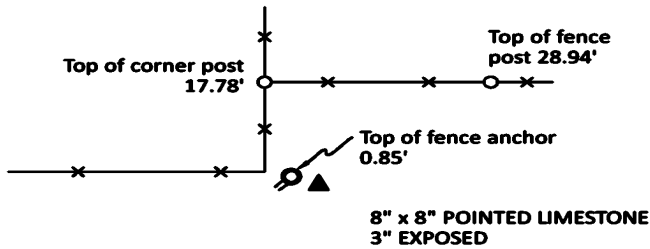
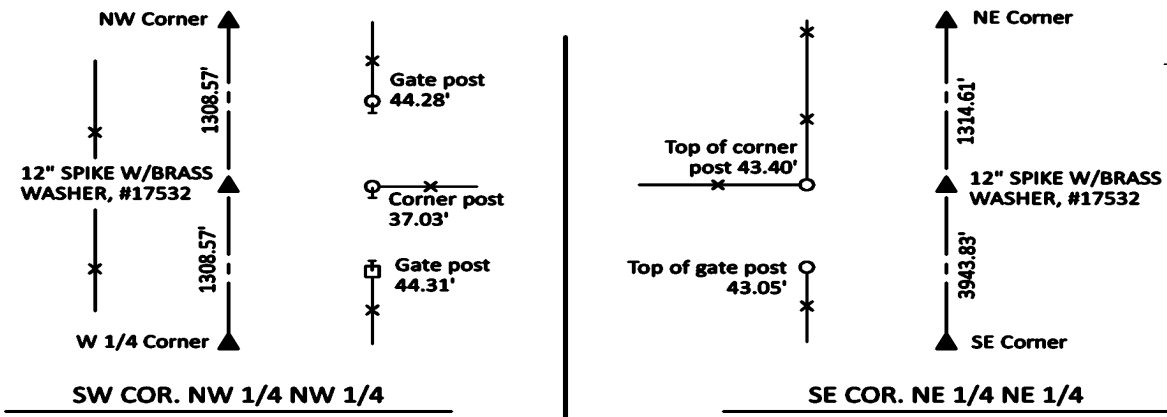
UNITED STATES PUBLIC LAND CORNER CERTIFICATE

Land Survey Monuments in Section 29, Township 77 North, Range 28 West of the 5th P.M., Madison County, Iowa.  
 Previously recorded in n.a. in the County Recorder's Office

MONUMENT DESCRIPTIONS AND REMARKS:

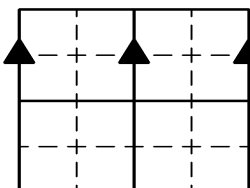
SW COR. NW 1/4 NW 1/4 - Set midpoint and online between NW Cor and W 1/4 Cor.  
 SE COR. NE 1/4 NE 1/4 - Set at 1/4 point between NE Cor. and SE Cor.  
 SW COR. NW 1/4 NE 1/4 - Found 8" x 8" pointed limestone near corner post. Accepted position.

PLAN VIEW



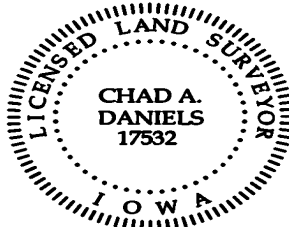
SW COR. NW 1/4 NE 1/4

ALL TIES TO RING SHANK NAILS UNLESS NOTED



Section Number:  
**29**

Project Number: 2271



I hereby certify that this surveying document was prepared by me and the related survey work was performed by me or under my direct personal supervision and that I am a duly licensed Professional Land Surveyor under the laws of the State of Iowa.

Signed *Chad A. Daniels* 6 JUN 24  
 Chad A. Daniels Date

Iowa License No. 17532  
 My license renewal date is 12-31-2024