

RETURN TO: DANIELS LAND SURVEYING, 22470 18TH LANE, NEW VIRGINIA IA 50210 (515) 577-2583

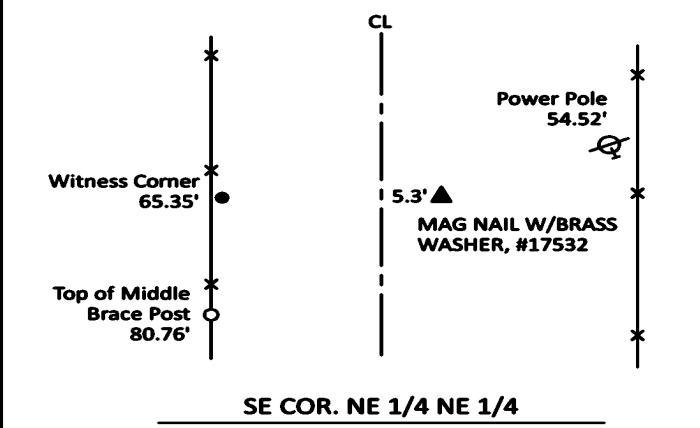
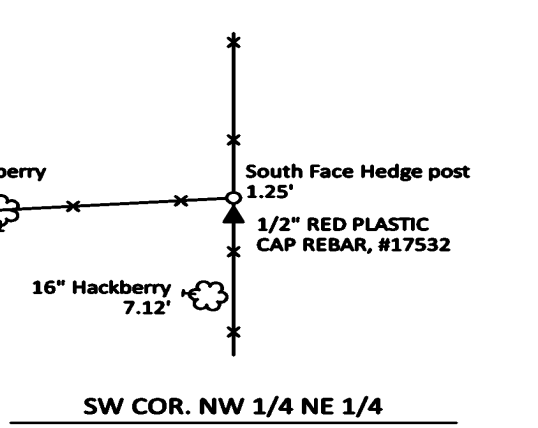
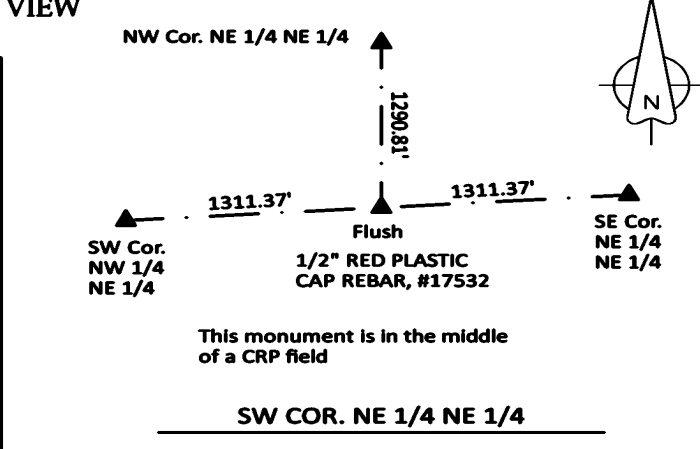
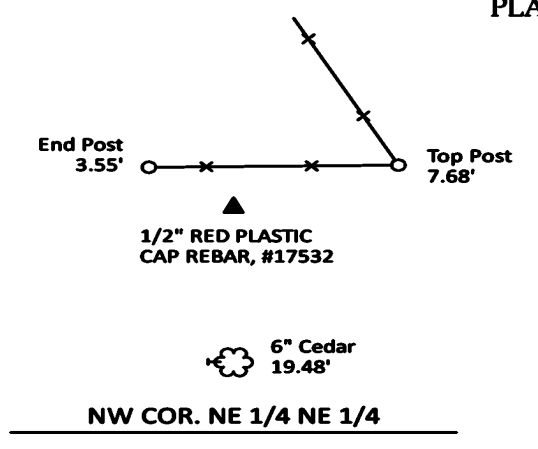
UNITED STATES PUBLIC LAND CORNER CERTIFICATE

Land Survey Monuments in Section 10, Township 74 North, Range 26 West of the 5th P.M., Madison County, Iowa.
 Previously recorded in n.a. in the County Recorder's Office

MONUMENT DESCRIPTIONS AND REMARKS:

NW COR. NE 1/4 NE 1/4 - Set midpoint and online between N 1/4 Corner and NE Corner. SW COR. NE 1/4 NE 1/4 - Set at mathematical Center of NE 1/4. SW COR. NW 1/4 NE 1/4 - Set midpoint and online between Center and N 1/4 Corner. SE COR. NE 1/4 NE 1/4 - Set midpoint and online between NE Cor. and E 1/4 Cor.

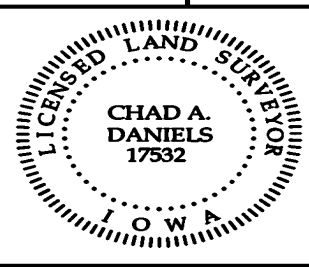
PLAN VIEW



ALL TIES TO RING SHANK NAILS UNLESS NOTED

Section Number: **10**

Project Number: 2264



I hereby certify that this surveying document was prepared by me and the related survey work was performed by me or under my direct personal supervision and that I am a duly licensed Professional Land Surveyor under the laws of the State of Iowa.

Signed *Chad A. Daniels* 29 MAY 24
 Chad A. Daniels Date
 Iowa License No. 17532
 My license renewal date is 12-31-2024