



Document 2023 3172

Book 2023 Page 3172 Type 06 043 Pages 1  
Date 12/26/2023 Time 10:24:34AM  
Rec Amt \$7.00

INDX  
ANNO  
SCAN

BRANDY MACUMBER, COUNTY RECORDER  
MADISON COUNTY IOWA

CHEK

PREPARED BY AND RETURN TO: **ABACI CONSULTING INC.**, 3000 SE GRIMES BLVD, STE 800, GRIMES, IA 50111, PH.(515)986-5048

UNITED STATES PUBLIC LAND SURVEY CORNER CERTIFICATE

OF

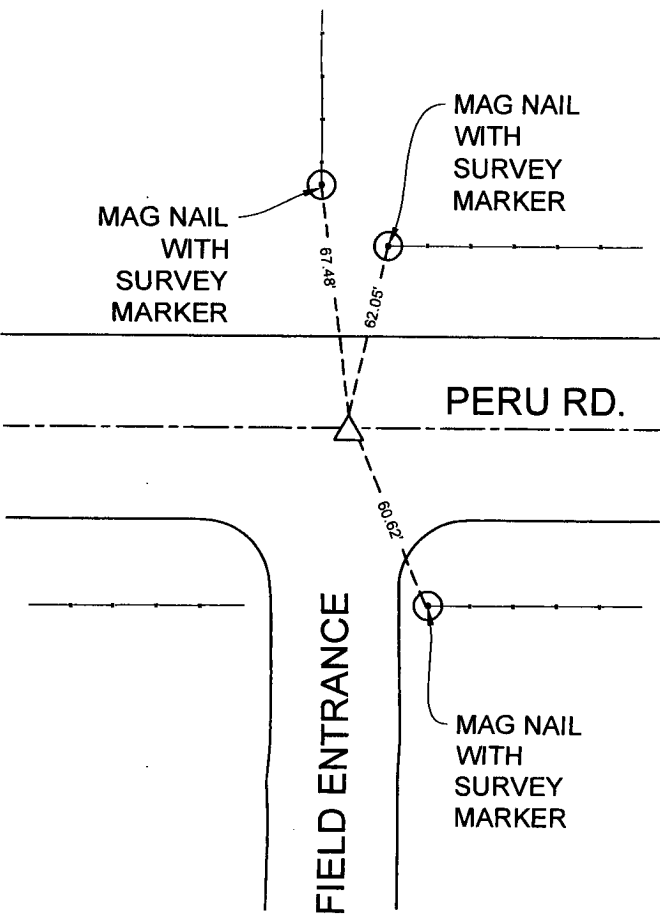
LAND SURVEY MONUMENTS SITUATED IN SECTION 12, TOWNSHIP 74, RANGE 27, of the Fifth Principal Meridian, MADISON County, Iowa.

Previously recorded in NA in County Recorder's Office.

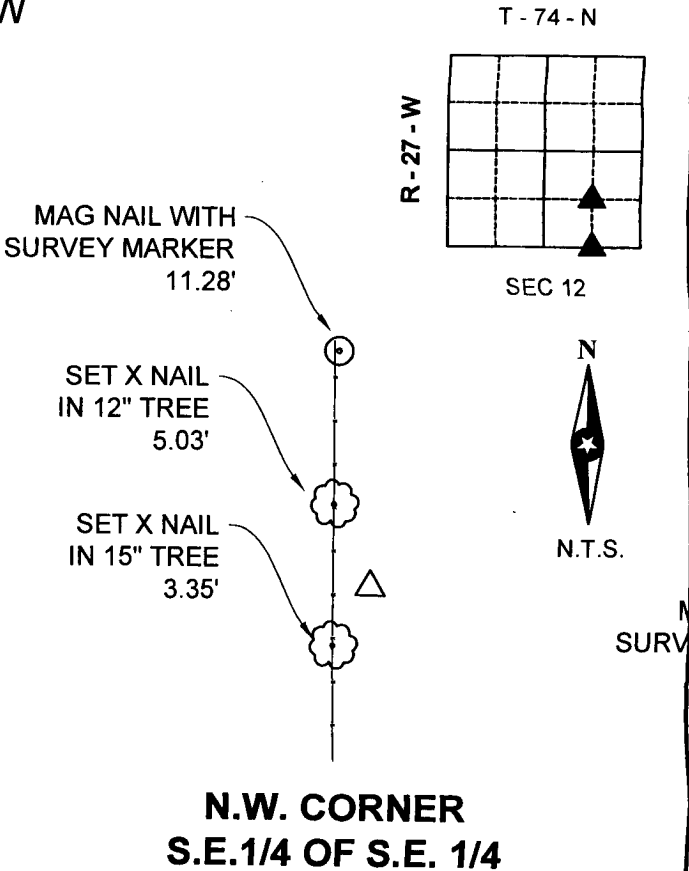
Monument Description & Remarks: SW CORNER SE 1/4 SE 1/4 - SET MAG NAIL - NO PREVIOUS RECORDED TIES - SET AT SPLIT BETWEEN S 1/4 AND SE CORNER.

NW CORNER SE 1/4 SE 1/4 - SET 1/2" IR OC #19440 - SET AT SPLIT BETWEEN SW CORNER SE 1/4 SE 1/4 AND NW CORNER NE 1/4 SE 1/4.

PLAN VIEW



S.W. CORNER  
S.E. 1/4 OF S.E. 1/4



N.W. CORNER  
S.E.1/4 OF S.E. 1/4

I HEREBY CERTIFY THAT THIS SURVEYING DOCUMENT WAS PREPARED AND THE RELATED WORK WAS PERFORMED BY ME OR UNDER MY DIRECT PERSONAL SUPERVISION AND THAT I AM A DULY LICENSED PROFESSIONAL LAND SURVEYOR UNDER THE LAWS OF THE STATE OF IOWA.

SIGNATURE Merlin L. Davis DATE 12/22/23

PRINTED OR TYPED NAME:  
IOWA LIC. NO. 19440  
MY LICENSE RENEWAL DATE IS DECEMBER 31, 2024  
THIS SHEET ONLY



CORNERS TO BE INDEXED

CORNER	SECTION	TWP	RANGE
NW CORNER SE 1/4 SE 1/4	12	74	27
SW CORNER SE 1/4 SE 1/4	12	74	27
NW CORNER NE 1/4 NE 1/4	13	74	27

#23232