

BK: 2023 PG: 2364
Recorded: 9/27/2023 at 8:19:42.0 AM
Pages 1
County Recording Fee: \$7.00
Iowa E-Filing Fee: \$3.13
Combined Fee: \$10.13
Revenue Tax:
BRANDY L. MACUMBER, RECORDER
Madison County, Iowa

PREPARED BY: CRAIG S. BOLDMAN 521 WEST GREEN STREET WINTERSET, IA 50273 PHONE (515)462-9242

UNITED STATES PUBLIC LAND SURVEY CORNER CERTIFICATE

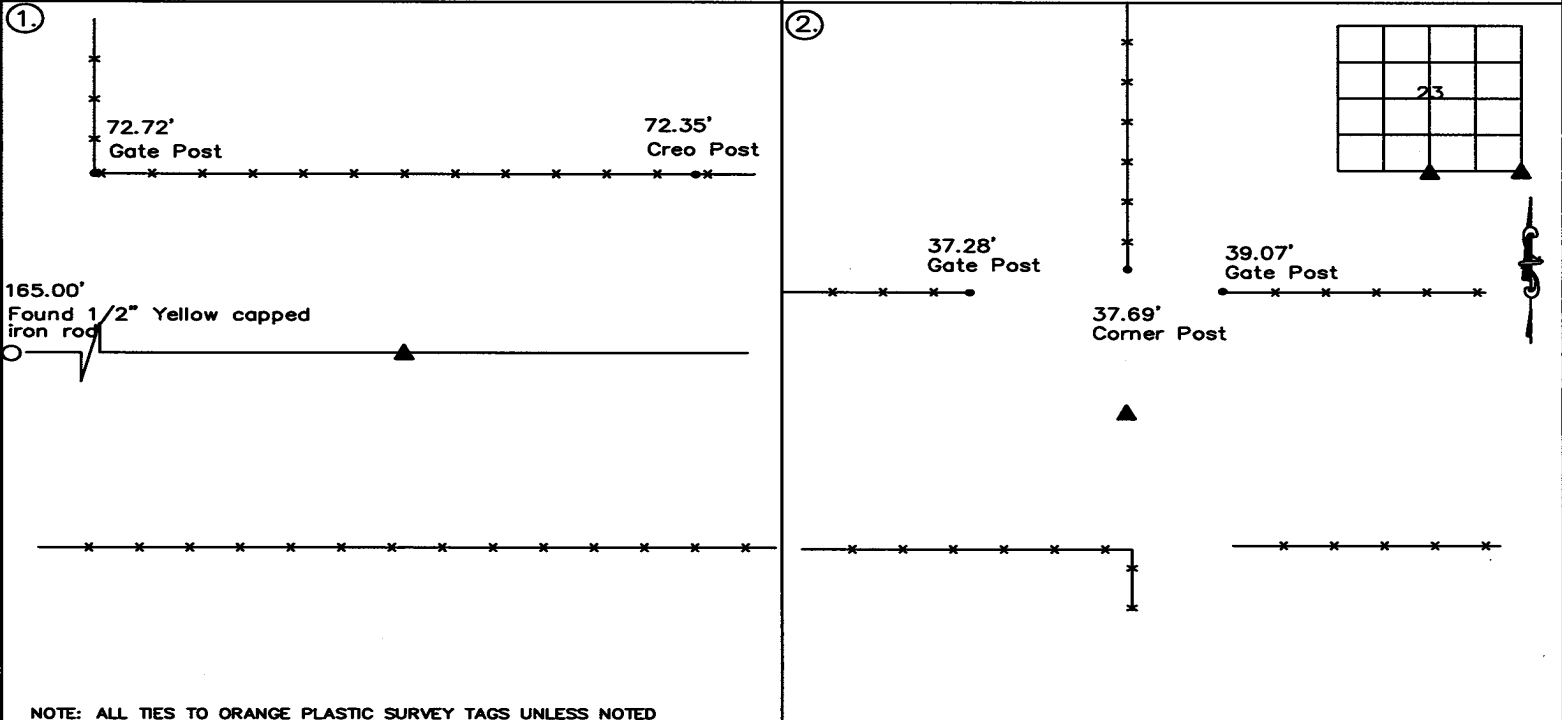
Land Survey Monuments situated in Section 23, Township 77, Range 26, the Fifth Principal Meridian, Madison County, Iowa.
Previously recorded in S 1/4 Corner - Book 1 Page: 22 in County Recorder's Office

(Show reason for preparing this certificate, the evidence and detailed procedures used in establishing the corner positions & monumentation found or placed)

Monument Description and Remarks:

- ① S 1/4 Corner - Corner set by J.M. Hochstetler. Found some ties but monument missing. Reset corner from plat and ties.
- ② SE Corner - Stone found in 1904. Road grading project in 1950's. Stone never reset. Set corner using best available field evidence.

PLAN-VIEW



NOTE: ALL TIES TO ORANGE PLASTIC SURVEY TAGS UNLESS NOTED

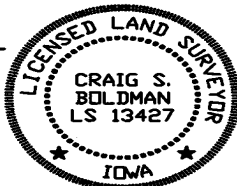
I HEREBY CERTIFY THAT THIS LAND SURVEYING DOCUMENT WAS PREPARED AND THE RELATED SURVEY WORK WAS PERFORMED BY ME OR UNDER MY DIRECT PERSONAL SUPERVISION AND THAT I AM A DULY LICENSED LAND SURVEYOR UNDER THE LAWS OF THE STATE OF IOWA

SIGNATURE Craig S. Boldman
CRAIG S. BOLDMAN

DATE: 9/26/23 LICENSE NO 13427

MY RENEWAL DATE IS DECEMBER 31, 2024

COVERS SHEETS A4



CORNERS TO BE INDEXED

Corners	Section	Township	Range
SE	23	77	26
SW	24	77	26
NE	26	77	26
NW	25	77	26

Project No. 22009