

Prepared By: **Abaci Consulting Inc.** 3000 SE Grimes Blvd Ste 800, Grimes IA, 50111; (515)986-5048

UNITED STATES PUBLIC LAND SURVEY CORNER CERTIFICATE

of

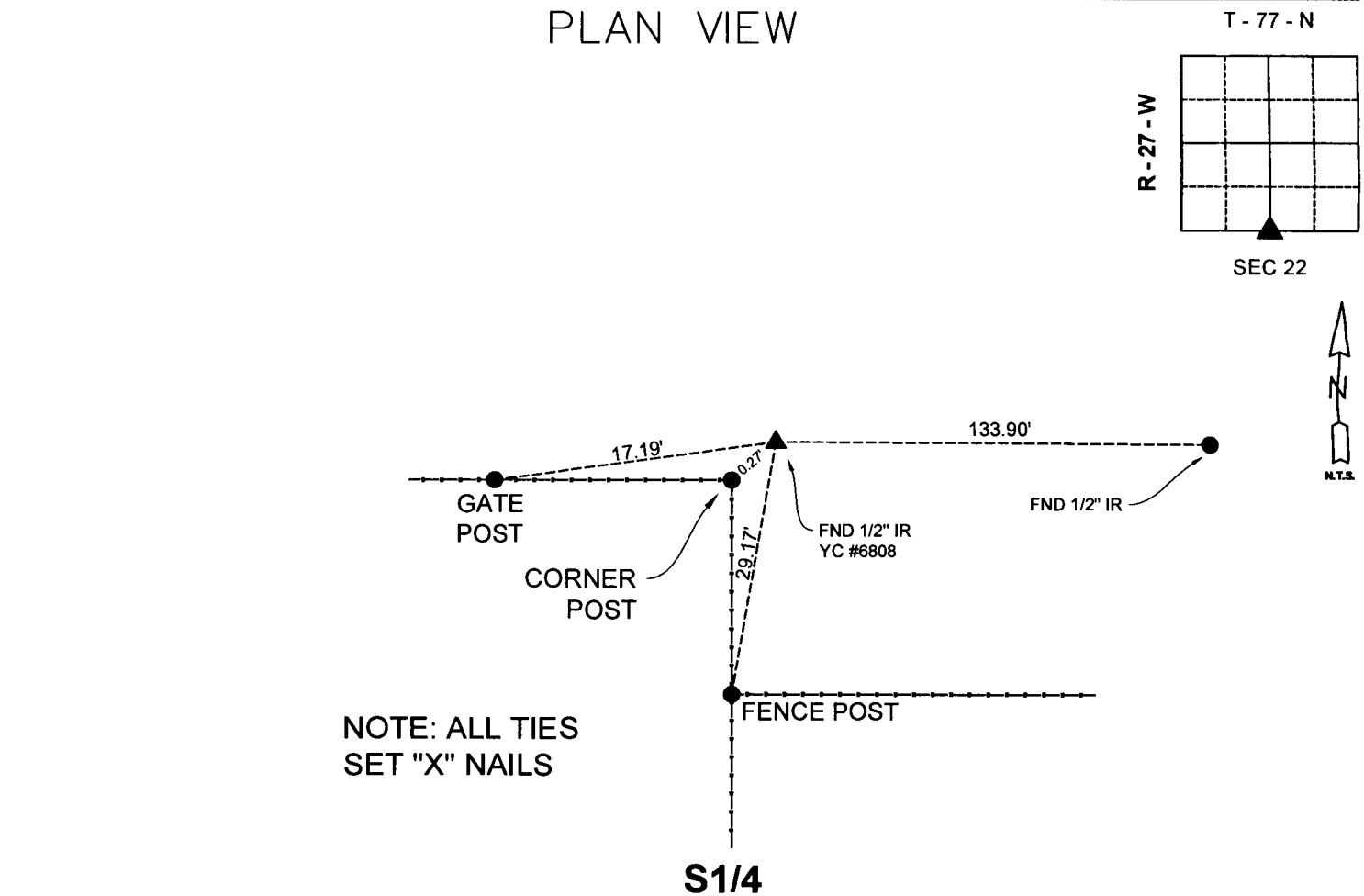
LAND SURVEY MONUMENTS SITUATED IN SECTION 22, TOWNSHIP 77N, RANGE 27W, of the Fifth Principal Meridian, MADISON County, Iowa.

Previously recorded in BK 2010 PG 2156 in County Recorder's Office.

Monument Description & Remarks:

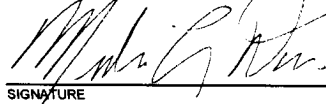
FOUND 1/2" IR PLS #6808 YC WITH METAL DETECTOR – PREVIOUS TIES ARE NOT EXISITNG –

RETIE MONUMENT – PREVIOUSLY RECORDED BOOK 1 PAGE 500 IN 1997.



#23133

I HEREBY CERTIFY THAT THIS SURVEYING DOCUMENT WAS PREPARED AND THE RELATED WORK WAS PERFORMED BY ME OR UNDER MY DIRECT PERSONAL SUPERVISION AND THAT I AM A DULY LICENSED PROFESSIONAL LAND SURVEYOR UNDER THE LAWS OF THE STATE OF IOWA.



7/13/23

SIGNATURE

DATE

PRINTED OR TYPED NAME:

MERLIN L. DAVIS

IOWA LIC. NO. 19440

MY LICENSE RENEWAL DATE IS DECEMBER 31, 2024.

THIS SHEET ONLY

PAGES COVERED BY THIS SEAL:



CORNERS TO BE INDEXED:			
CORNER	SECTION	TWP	RANGE
S 1/4	22	77	27
N 1/4	27	77	27