



Document 2022 1045

Book 2022 Page 1045 Type 06 043 Pages 1
Date 4/11/2022 Time 10:42:02AM
Rec Amt \$7.00

INDX
ANNO
SCAN

CHEK

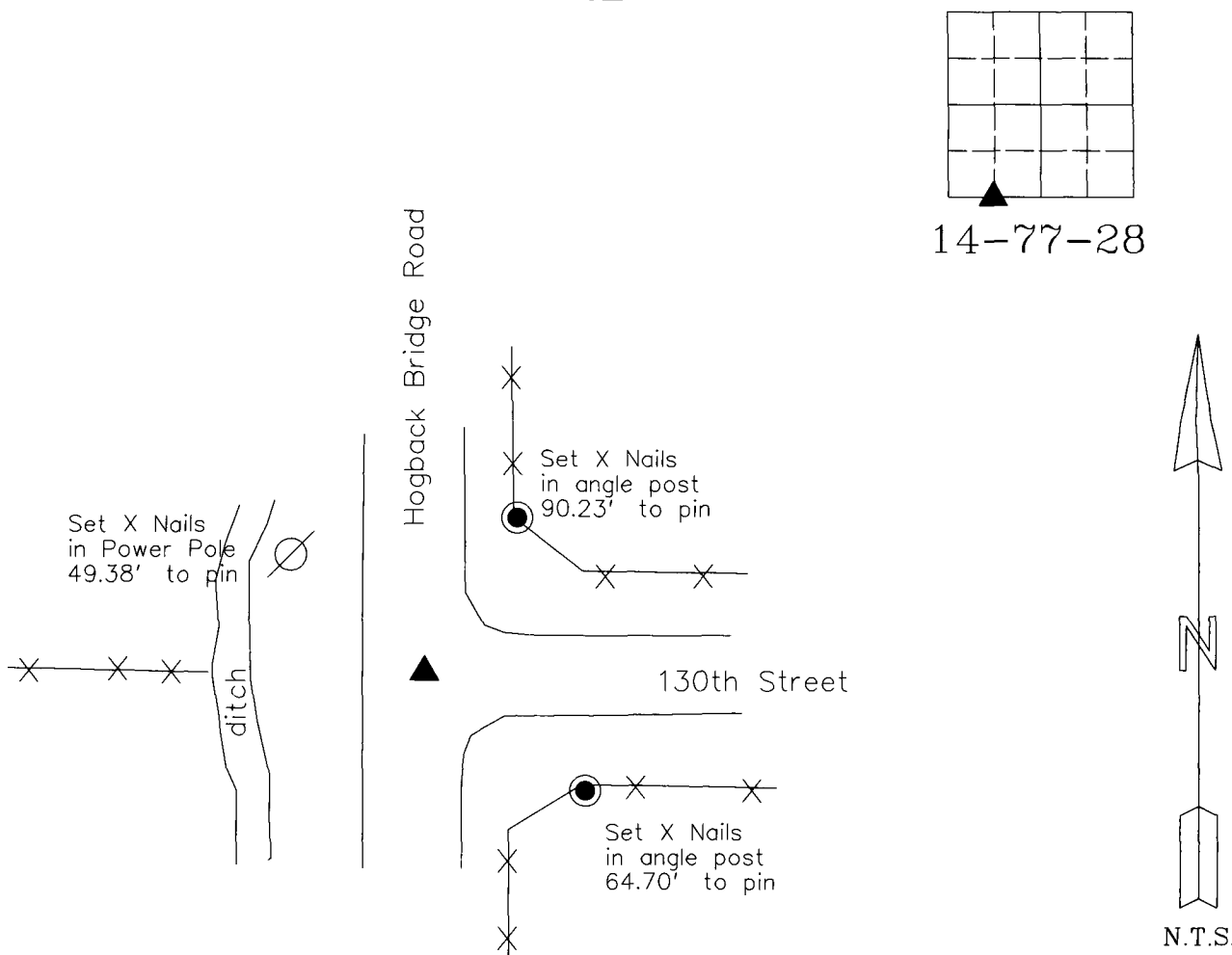
LISA SMITH, COUNTY RECORDER
MADISON COUNTY IOWA

Prepared by: Vincent E. Piagentini, Abaci Consulting Inc, 3000 SE Grimes Blvd., Ste 800, Grimes IA, 50111; (515)986-5048

UNITED STATES PUBLIC LAND SURVEY CORNER CERTIFICATE

of
LAND SURVEY MONUMENTS SITUATED IN SECTION 14, TOWNSHIP 77 N, RANGE 28 W, of the Fifth Principal Meridian, Madison County, Iowa.
Monument Description & Remarks:
SE Cor SW1/4 SW1/4 - Found 1/2" IR - No ties of Record

PLAN VIEW



SE Cor SW1/4 SW1/4
Sec 14-77-28
Fnd 1/2" IR

22022

I HEREBY CERTIFY THAT THIS SURVEYING DOCUMENT WAS PREPARED AND THE RELATED WORK WAS PERFORMED BY ME OR UNDER MY DIRECT PERSONAL SUPERVISION, AND THAT I AM A DULY LICENSED PROFESSIONAL LAND SURVEYOR UNDER THE LAWS OF THE STATE OF IOWA.

Vincent E. Piagentini 4/6/22
VINCENT E. PIAGENTINI, IOWA LIC. NO 15982 DATE

MY LICENSE RENEWAL DATE IS DECEMBER 31, 2022.

ADDITIONAL PAGES CERTIFIED (NONE UNLESS INDICATED HERE) _____
This sheet only.



Corners to be Indexed:			
Corner	Section	Twp	Range
SE Cor SW1/4 SW1/4	14	T77N	R28W
NE Cor NW1/4 NW1/4	20	T77N	R28W