



Document 2021 3056

Book 2021 Page 3056 Type 06 043 Pages 1

Date 7/22/2021 Time 10:38:03AM

Rec Amt \$7.00

INDX

ANNO

SCAN

CHEK

LISA SMITH, COUNTY RECORDER

MADISON COUNTY IOWA

Prepared by: Vincent E. Piagentini, Abaci Consulting Inc, 3000 SE Grimes Blvd., Ste 800, Grimes IA, 50111; (515)986-5048

# UNITED STATES PUBLIC LAND SURVEY CORNER CERTIFICATE

of

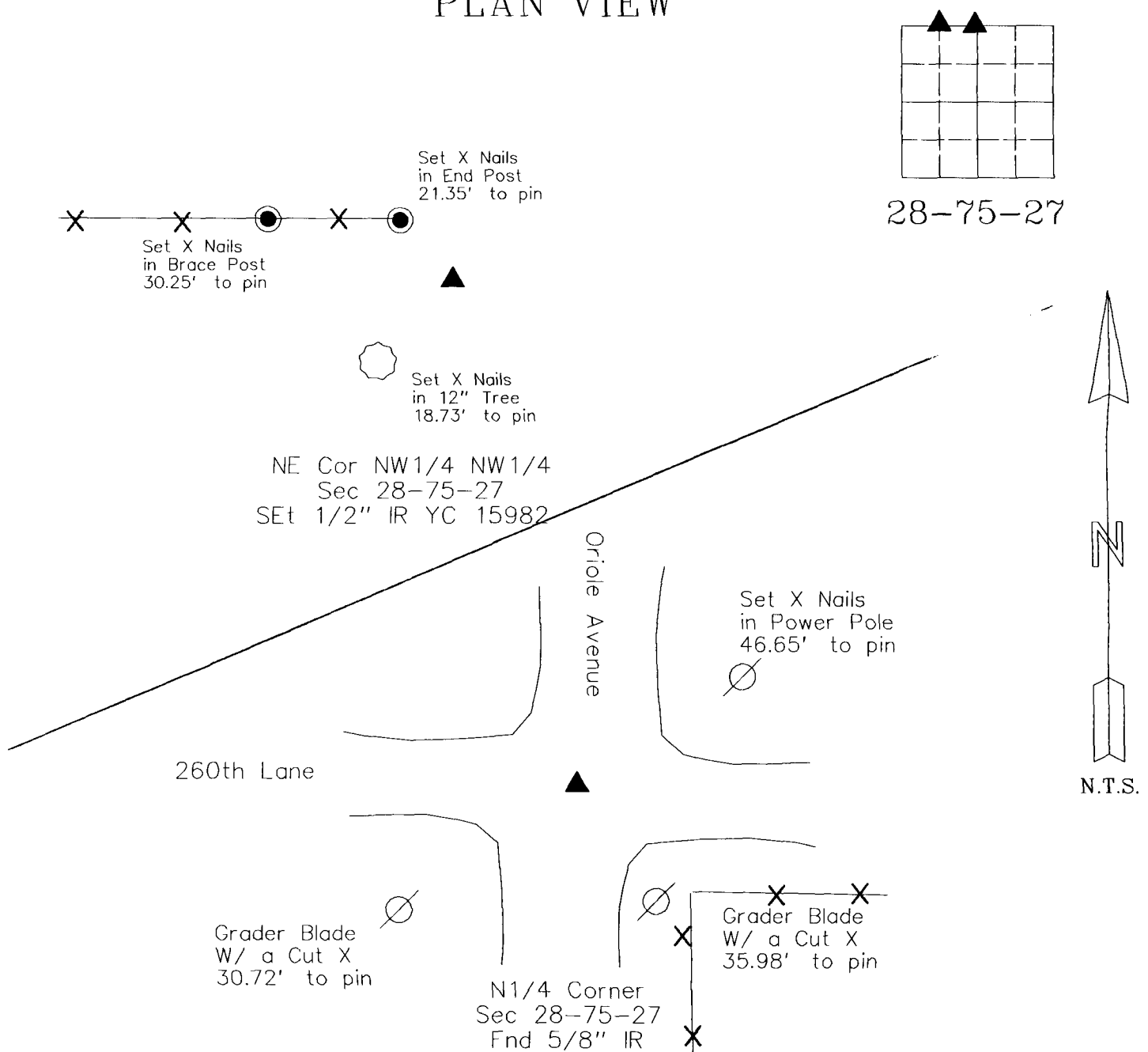
LAND SURVEY MONUMENTS SITUATED IN SECTION 28, TOWNSHIP 75 N, RANGE 27 W, of the Fifth Principal Meridian, Madison County, Iowa.

## Monument Description & Remarks:

N1/4 Corner - Found 5/8" IR, 4" deep - no ties of record

NE Corner NW1/4 NW1/4 - searched, found nothing - Set 1/2" IR YC 15982 - Set new ties, Set online at even split between N1/4 corner and NW corner of section 28-75-27

## PLAN VIEW



21245

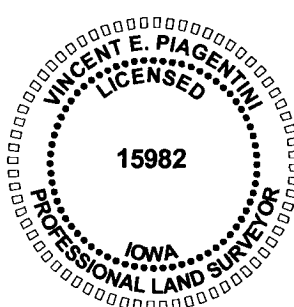
I HEREBY CERTIFY THAT THIS SURVEYING DOCUMENT WAS PREPARED AND THE RELATED WORK WAS PERFORMED BY ME OR UNDER MY DIRECT PERSONAL SUPERVISION, AND THAT I AM A DULY LICENSED PROFESSIONAL LAND SURVEYOR UNDER THE LAWS OF THE STATE OF IOWA.

*Vincent E. Piagentini* 7/19/21  
VINCENT E. PIAGENTINI, IOWA LIC. NO 15982 DATE

MY LICENSE RENEWAL DATE IS DECEMBER 31, 2022.

ADDITIONAL PAGES CERTIFIED (NONE UNLESS INDICATED HERE)

This sheet only.



### Corners to be Indexed:

Corner	Section	Twp	Range
N1/4 Corner	28	T75N	R27W
S1/4 Corner	21	T75N	R27W
NE Cor NW1/4 NW1/4	28	T75N	R27W
SE Cor SW1/4 SW1/4	21	T75N	R27W