

BK: 2021 PG: 2041
Recorded: 5/19/2021 at 8:28:02.0 AM
Pages 1
County Recording Fee: \$7.00
Iowa E-Filing Fee: \$3.13
Combined Fee: \$10.13
Revenue Tax:
LISA SMITH RECORDER
Madison County, Iowa

PREPARED BY: CRAIG S. BOLDMAN 521 WEST GREEN STREET, WINTERSET, IA 50273 PHONE (515)462-9242

UNITED STATES PUBLIC LAND SURVEY CORNER CERTIFICATE

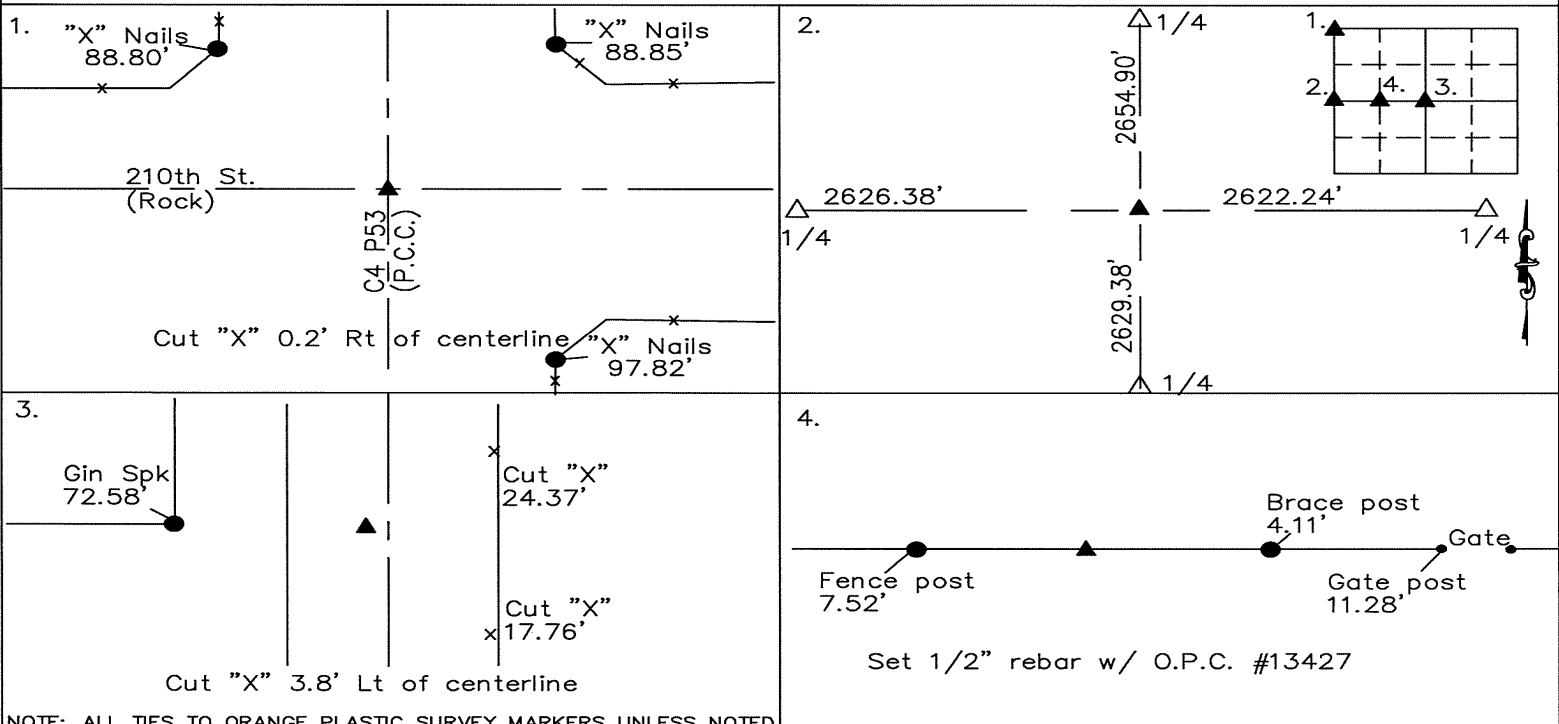
Land Survey Monuments situated in Section 34, Township 76N, Range 29W, the Fifth Principal Meridian, Madison County, Iowa.
 Previously recorded in None Found in County Recorder's Office

(Show reason for preparing this certificate, the evidence and detailed procedures used in establishing the corner positions & monumentation found or placed)

Monument Description and Remarks:

1. NW Corner – Iron pin obliterated by county road patching. Reset corner using record survey plats.
2. W 1/4 – Set at midpoint between section corners.
3. Center – Found pointed limestone as shown in county surveyor records.
4. S 1/4 W 1/4 – Set at midpoint between 1/4 and center.

PLAN-VIEW



NOTE: ALL TIES TO ORANGE PLASTIC SURVEY MARKERS UNLESS NOTED

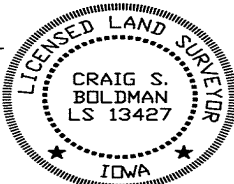
I HEREBY CERTIFY THAT THIS LAND SURVEYING DOCUMENT WAS
 PREPARED AND THE RELATED SURVEY WORK WAS PERFORMED
 BY ME OR UNDER MY DIRECT PERSONAL SUPERVISION AND
 THAT I AM A DULY LICENSED LAND SURVEYOR UNDER THE
 LAWS OF THE STATE OF IOWA

SIGNATURE Craig S. Boldman

DATE: 5/15/21 LICENSE NO 13427

MY RENEWAL DATE IS DECEMBER 31, 2022

COVERS SHEETS 74



CORNERS TO BE INDEXED

Corners	Section	Township	Range
NW	34	76	29
W 1/4	34	76	29
Center	34	76	29
S 1/4 W 1/4	34	76	29

Project No. 21027