

BK: 2021 PG: 2034
Recorded: 5/18/2021 at 12:38:36.0 PM
Pages 1
County Recording Fee: \$7.00
Iowa E-Filing Fee: \$3.13
Combined Fee: \$10.13
Revenue Tax:
LISA SMITH RECORDER
Madison County, Iowa

PREPARED BY: CRAIG S. BOLDMAN 521 WEST GREEN STREET, WINTERSET, IA 50273 PHONE (515)462-9242

UNITED STATES PUBLIC LAND SURVEY CORNER CERTIFICATE

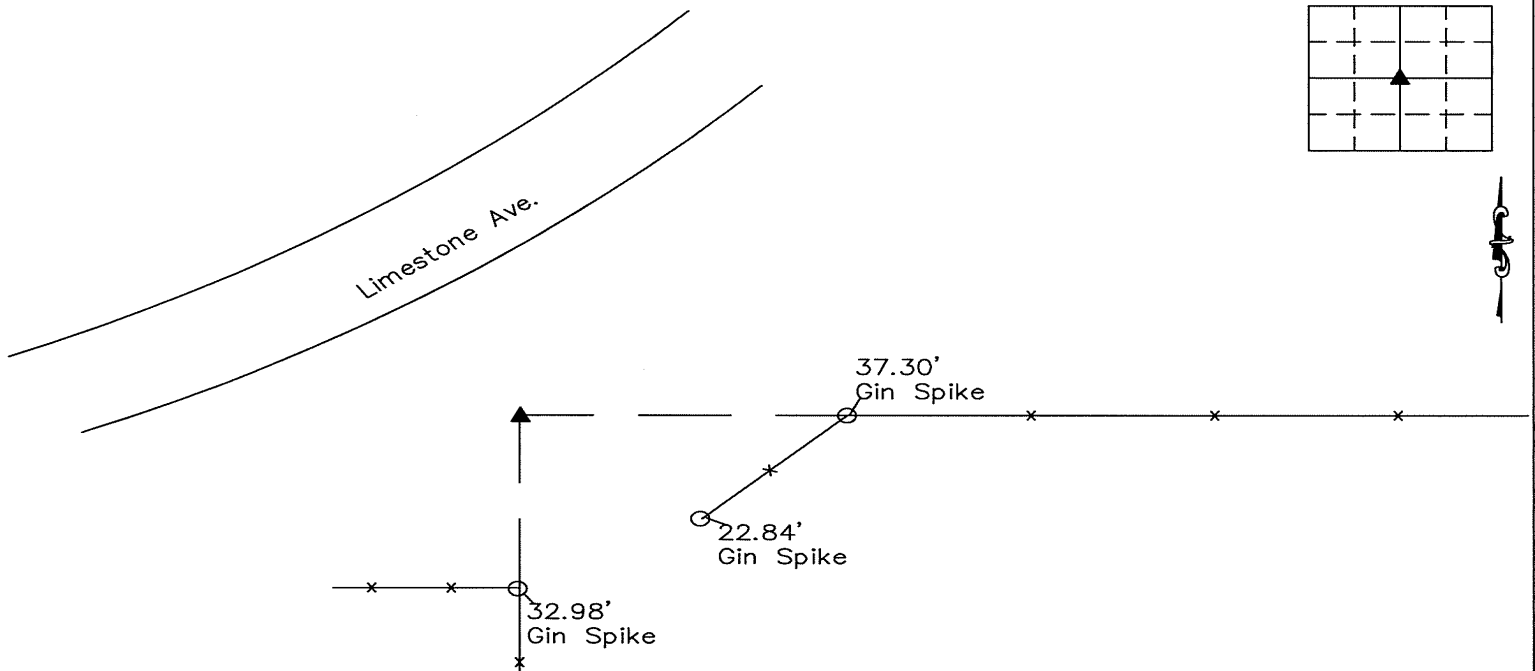
Land Survey Monuments situated in Section 1, Township 74N, Range 28W, the Fifth Principal Meridian, Madison County, Iowa.
Previously recorded in Book 1 Page; 191 in County Recorder's Office

(Show reason for preparing this certificate, the evidence and detailed procedures used in establishing the corner positions & monumentation found or placed)

Monument Description and Remarks:

Center Section — Found 60d nail at intersection of fences East and South. Replaced nail and set 1/2" iron rod w/ orange cap #13427

PLAN—VIEW



NOTE: ALL TIES TO ORANGE PLASTIC SURVEY MARKERS UNLESS NOTED

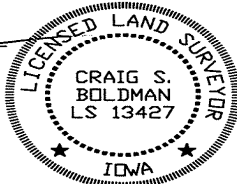
I HEREBY CERTIFY THAT THIS LAND SURVEYING DOCUMENT WAS PREPARED AND THE RELATED SURVEY WORK WAS PERFORMED BY ME OR UNDER MY DIRECT PERSONAL SUPERVISION AND THAT I AM A DULY LICENSED LAND SURVEYOR UNDER THE LAWS OF THE STATE OF IOWA

SIGNATURE Craig S. Boldman
CRAIG S. BOLDMAN

DATE: 5/17/24 LICENSE NO 13427

MY RENEWAL DATE IS DECEMBER 31, 2022

COVERS SHEETS 761



CORNERS TO BE INDEXED

Corners	Section	Township	Range
Center	1	74	28

Project No. 21028