



Document 2020 2091

Book 2020 Page 2091 Type 06 043 Pages 1  
Date 6/15/2020 Time 10:49:51AM  
Rec Amt \$7.00

INDX  
ANNO  
SCAN  
CHEK

LISA SMITH, COUNTY RECORDER  
MADISON COUNTY IOWA

Prepared by: Vincent E. Piagentini, Abaci Consulting Inc, 3000 SE Grimes Blvd., Ste 800, Grimes IA, 50111; (515)986-5048

# UNITED STATES PUBLIC LAND SURVEY CORNER CERTIFICATE

of  
LAND SURVEY MONUMENTS SITUATED IN SECTION 7, TOWNSHIP 74 N, RANGE  
27 W, of the Fifth Principal Meridian, Madison County, Iowa.

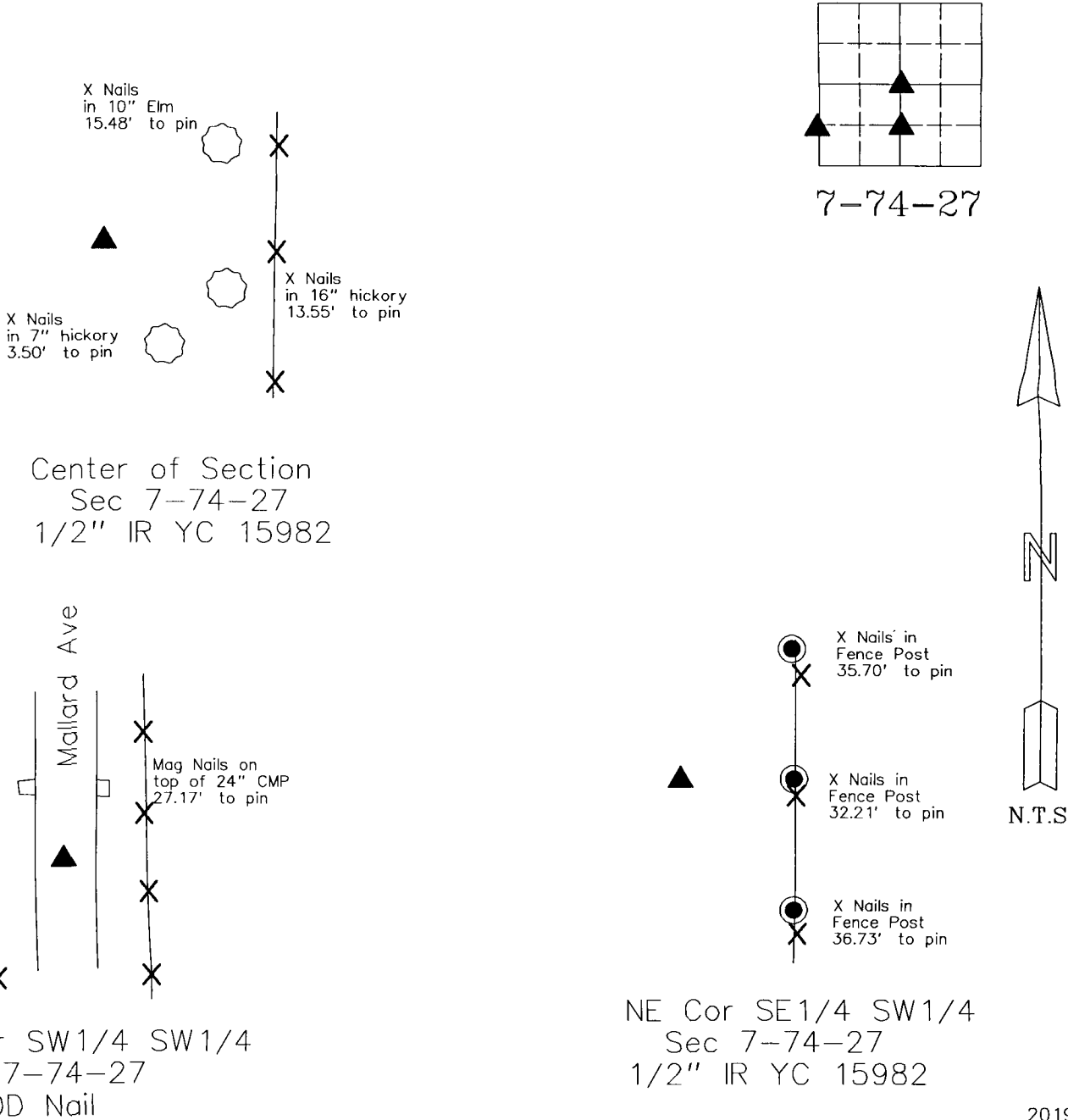
### Monument Description & Remarks:

Center - Found 1/2" IR YC 15982 - No ties of record

NW Corner SW1/4 SW1/4 - Found 60D Nail - No ties of record

NE Corner SE1/4 SW1/4 - Set 1/2" IR YC 15982 online between Center of Section and S1/4 Corner

## PLAN VIEW



20192

I HEREBY CERTIFY THAT THIS SURVEYING DOCUMENT WAS PREPARED AND THE RELATED WORK WAS PERFORMED BY ME OR UNDER MY DIRECT PERSONAL SUPERVISION, AND THAT I AM A DULY LICENSED PROFESSIONAL LAND SURVEYOR UNDER THE LAWS OF THE STATE OF IOWA.

*Vincent E. Piagentini* 6/8/2020  
VINCENT E. PIAGENTINI, IOWA LIC. NO 15982 DATE

MY LICENSE RENEWAL DATE IS DECEMBER 31, 2020.

ADDITIONAL PAGES CERTIFIED (NONE UNLESS INDICATED HERE) This sheet only.



### Corners to be Indexed:

Corner	Section	Twp	Range
CENTER	7	T74N	R27W
NE Cor SE1/4 SW1/4	7	T74N	R27W
NW Cor SW1/4 SW1/4	7	T74N	R27W
NE Cor SE1/4 SE1/4	12	T74N	R28W