

Thomas & Mahala Kirkland's

Addition

to

Macksburg, Iowa.

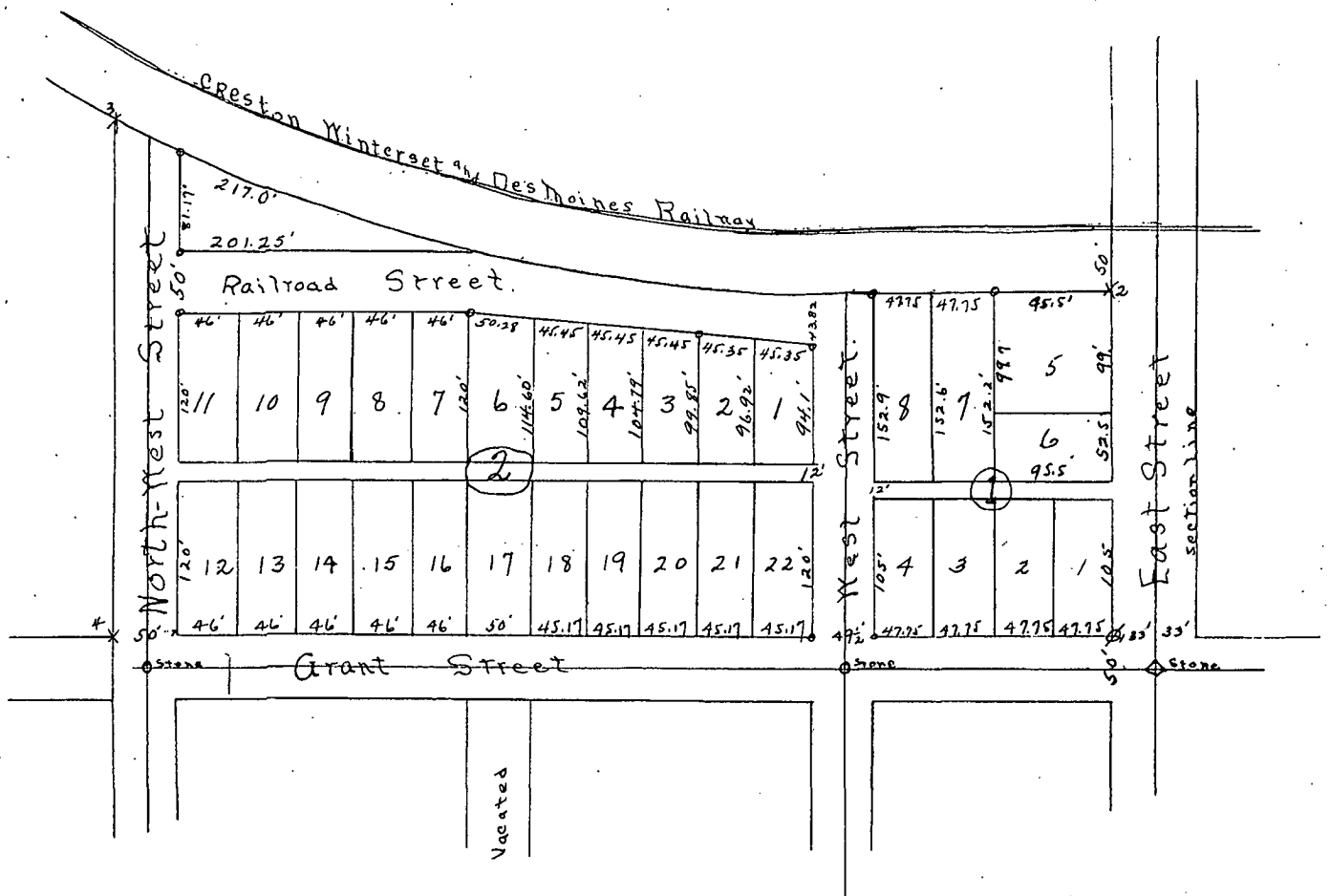
Section 9.

Grand River Tp. Madison County.  
Being a replat of the north tier of lots  
of "Lee's Addition to Macksburg, Iowa",  
and the land between this tier of lots  
and the Railroad Right-of-way.

E. B. Hiatt, Co. Engr.  
by H. H. Flanagan.

Scale 100 ft = 1 inch

Jan. 2, 1913.  
O = Iron Pipe corners.



Filed for record the 30<sup>th</sup>  
day of Sept. A. D. 1913, at  
5 o'clock P. M.

Jeanette E. Beach, Recorder.  
By Edith E. Cornell, Deputy.

For notes see Brown Lot Deed  
Record 11 - Page 509