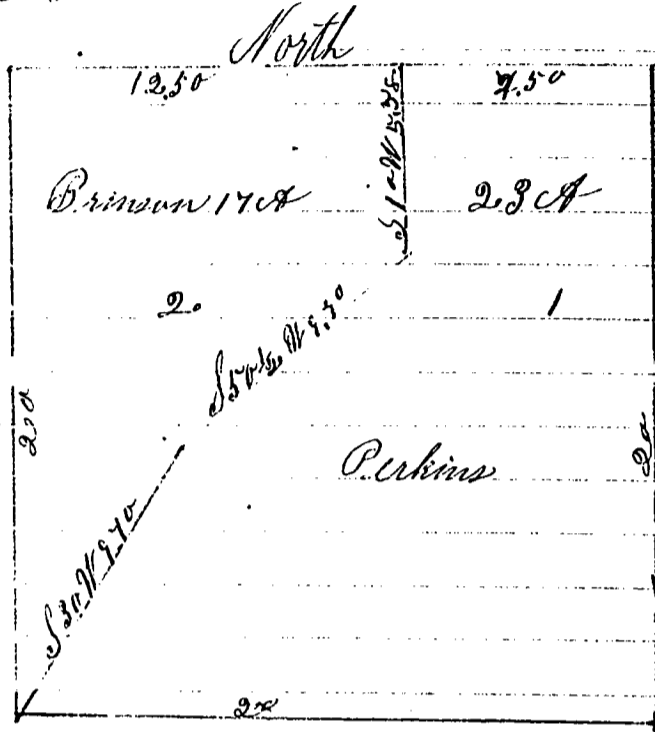


* 3200

Sub Div of S. E. Q. Co. 14-75-28
To Plot
Sub Div of S. E. Q. Co. 14-75-28



I hereby - the above plat to be correct of a survey made by me on the 5th day of Feb 1873 it being the South East $\frac{1}{4}$ of the North East $\frac{1}{4}$ of Section No 14-75-28 said forty acres being divided into two lots numbered one and two said plat shows correctly the the number of acres in each lot the course and length of each line from corner to corner

A. W. Wilkinson
Surveyor of Madison
County Iowa

Filed for me 9 15 73 at 4 o'clock P.M.

J. F. Smith
Recorder