



Book 2026 Page 1740
 Document 2026 1740 Type 06 007 Pages 1
 Date 6/26/2026 Time 2:06:44PM
 Rec Amt \$7.00

Daneen Schindler, RECORDER/REGISTRAR
 DELAWARE COUNTY IOWA

PREPARED BY: ^{CRW} RANDALL L. RATTENBORG 105 WEST MAIN STREET MANCHESTER, IA 52057, 563-927-2434

UNITED STATES PUBLIC LAND SURVEY CORNER CERTIFICATE

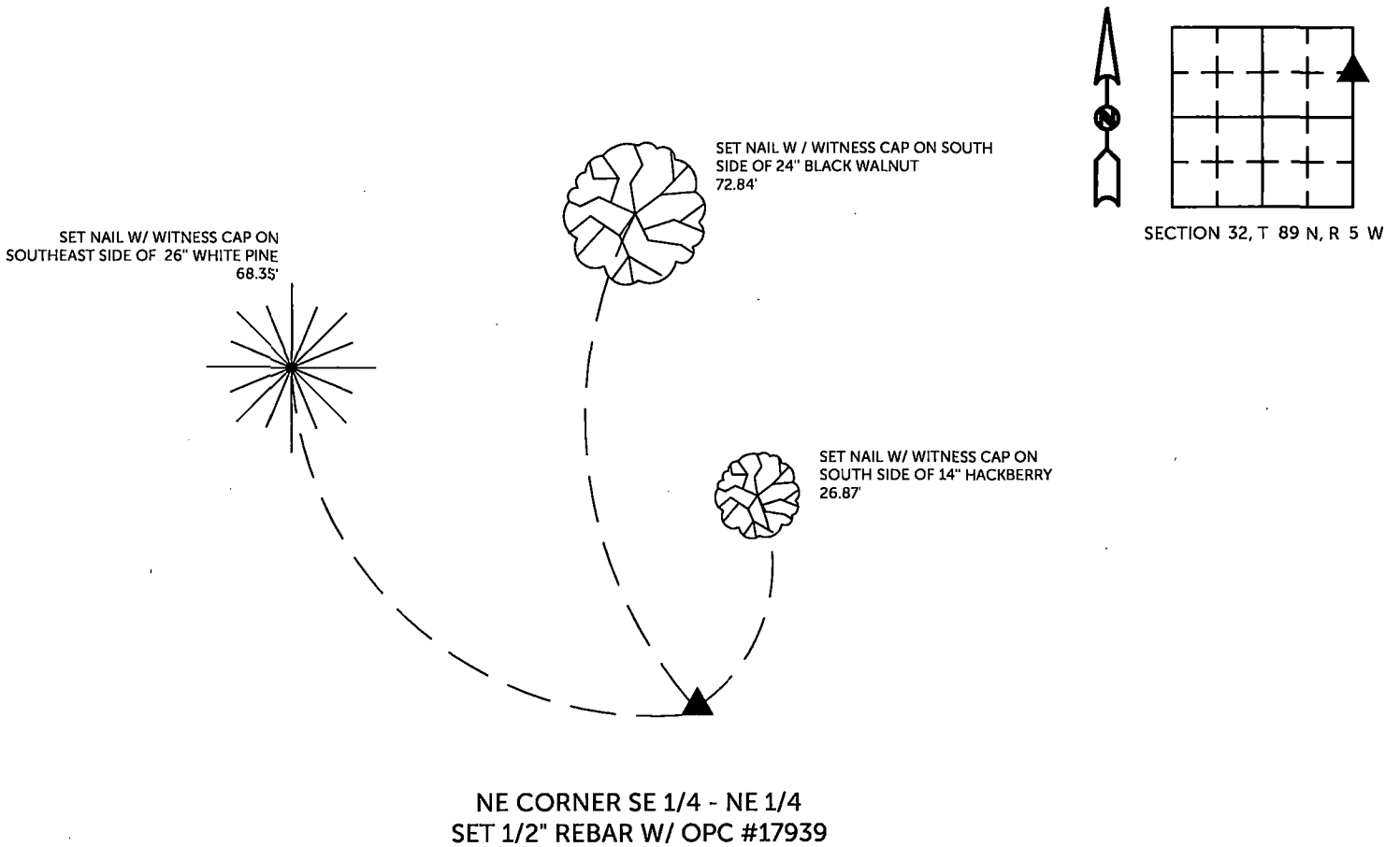
Land Survey Monuments situated in Section 32, Township 89 North, Range 5 West of the Fifth Principal Meridian,
Delaware County, Iowa.

Previously recorded in County Recorder's Office in Not Recorded
(book, page, document number, etc.)

NE CORNER SE 1/4 - NE 1/4: Set 1/2" rebar with orange plastic cap #17939 on the section line between the NE Corner and the E 1/4 Corner and using the geometry of W. C. Mawe Subdivision. Looked for the monument that was shown on the subdivision plat and found none.

PLAN VIEW

(Show a minimum of three reference ties to durable physical objects, relevant monuments and physical conditions that will enable recovery of the corner.)

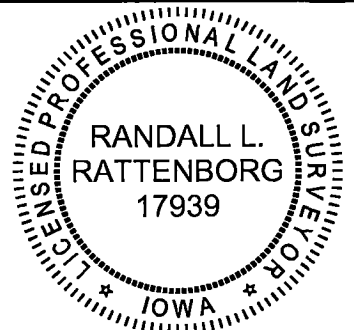


TIES ARE TO PLAT SHERMAN'S FARM SUBDIVISION
 IN SECTION 32, T 89 N, R 5 W

BURRINGTON GROUP, INC. PROJECT NO. 26-029

I HEREBY CERTIFY THAT THIS LAND SURVEYING DOCUMENT WAS PREPARED AND THE RELATED SURVEY WORK WAS PERFORMED BY ME OR UNDER MY DIRECT PERSONAL SUPERVISION AND THAT I AM A DULY LICENSED PROFESSIONAL LAND SURVEYOR UNDER THE LAWS OF THE STATE OF IOWA.

SEAL COVERS THIS SHEET ONLY



[Signature] 6/26/2026
 Randall L. Rattenborg, P.L.S. License #17939 Date
 My license renewal date is December 31, 2027

List Corners to be Indexed:	Section	Township	Range
NE CORNER SE 1/4 - NE 1/4	32	T 89N	R 5 W

BURRINGTON GROUP, INC.
 Civil Engineering | Land Surveying
 105 W. Main Street Manchester, Iowa 52057