



Book 2026 Page 1182  
 Document 2026 1182 Type 06 007 Pages 1  
 Date 5/11/2026 Time 11:14:33AM  
 Rec Amt \$7.00

Daneen Schindler, RECORDER/REGISTRAR  
 DELAWARE COUNTY IOWA

DONAHUE SURVEYING LLC CORY F. DONAHUE 481 STATE HWY 76 HARPERS FERRY, IOWA 52146 (563) 880-4961

TIES. DWG M. Boeckenstedt

SLSI 9-90

UNITED STATES PUBLIC LAND SURVEY CORNER CERTIFICATE

OF

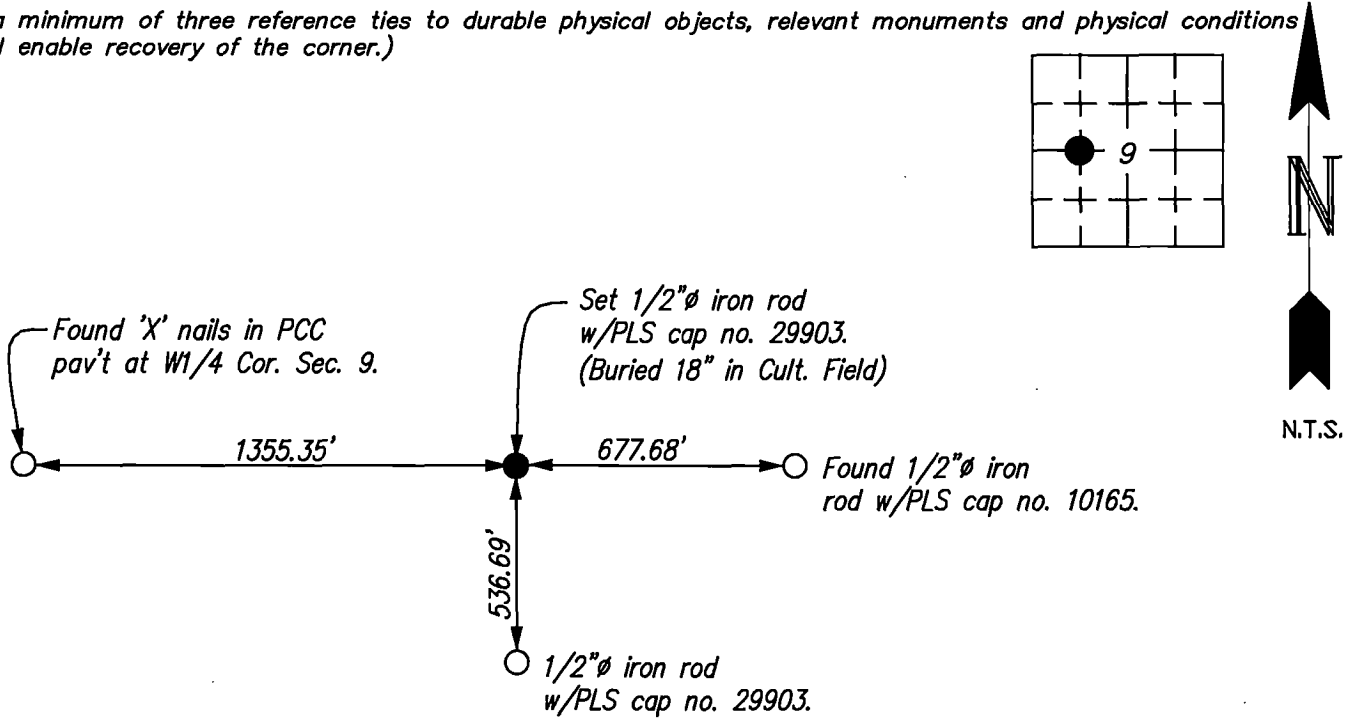
Land Survey Monuments situated in Section 9, Township 89 North, Range 5 West, of the Fifth Principal Meridian, Delaware County, Iowa. Previously recorded in Book 2021, Page 401 in County Recorder's Office. (book, page, document number, etc.)

(Show reason for preparing this certificate, the evidence and detailed procedures used in establishing the corner positions and monumentation found or placed.)

Monument Description and Remarks: Corner location was previously monumented with a 5/8"Ø Rod w/ orange cap PLS no. 15487. Could not find said monument. Re-established corner position according to a Plat of Survey recorded in Book 2020 Page 3381 of Delaware County Recorder's Office.. Set 1/2"Ø iron rod with PLS cap no. 29903 at the computed postion.

PLAN - VIEW

(Show a minimum of three reference ties to durable physical objects, relevant monuments and physical conditions that will enable recovery of the corner.)



GRID STATE PLANE COORDINATES

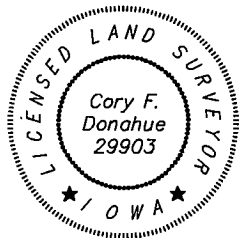
N=3664738.50 E=5474463.51

Coordinates are based on the Iowa State Plane Coordinate System North Zone (1401) Horizontal NAD 83 (2011).

I hereby certify that this land surveying document was prepared by me or under my direct personal supervision and that I am a duly Registered Land Surveyor under the laws of the state of Iowa.

Cory F. Donahue 5/6 2026  
 CORY F. DONAHUE, P.L.S. Iowa Registration No. 29903  
 My registration expires December 31, 2026

Seal



List Corners to be Indexed			
Corners	Section	Twp	Range
NE Cor. of NW1/4-SW1/4	9	89N	5W