

Book 2026 Page 1164
 Document 2026 1164 Type 06 007 Pages 1
 Date 5/08/2026 Time 12:07:49PM
 Rec Amt \$7.00

**Daneen Schindler, RECORDER/REGISTRAR
 DELAWARE COUNTY IOWA**

PREPARED BY: RANDALL L. RATTENBORG 105 WEST MAIN STREET MANCHESTER, IA 52057, 563-927-2434

UNITED STATES PUBLIC LAND SURVEY CORNER CERTIFICATE

Land Survey Monuments situated in Section 5, Township 90 North, Range 4 West of the Fifth Principal Meridian,
Delaware County, Iowa.

Previously recorded in County Recorder's Office in None
(book, page, document number, etc.)

NW Corner, Found 1/2"Ø rebar with aluminum cap PLS 10165. Creating certificate because no certificate of record found.

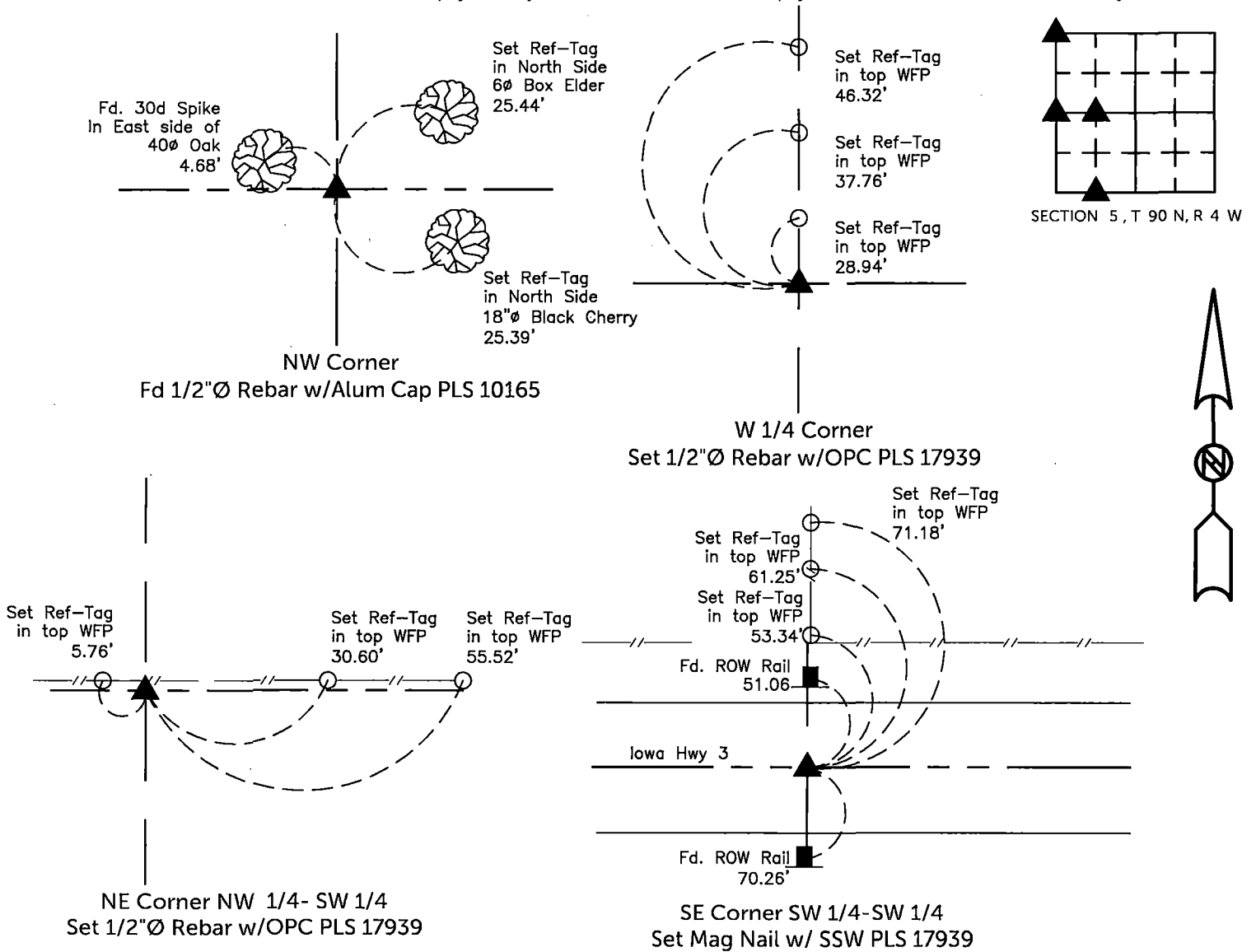
West 1/4 Corner, Set 1/2"Ø rebar with orange plastic cap PLS 17939 equidistant and on-line between the NW Corner and the SW Corner.

NE Corner NW 1/4-SW 1/4, Set 1/2"Ø rebar with orange plastic cap PLS 17939 equidistant and on-line between the Center and the W 1/4 Corner.

SE Corner SW 1/4-SW 1/4, Set Mag w/SSW PLS 17939 equidistant and on-line between the SW Corner and the S 1/4 Corner.

PLAN VIEW

(Show a minimum of three reference ties to durable physical objects, relevant monuments and physical conditions that will enable recovery of the corner.)

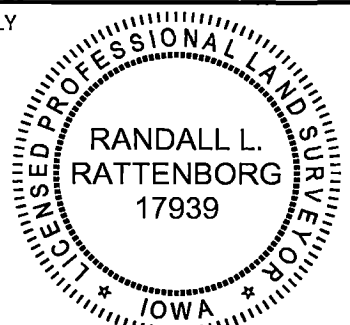


TIES ARE TO PLAT Parcel 2021-162, Parcel 2021-127
 IN SECTION 5, T 90 N, R 4 W

BURRINGTON GROUP, INC. PROJECT NO. 21-123

I HEREBY CERTIFY THAT THIS LAND SURVEYING DOCUMENT WAS PREPARED AND THE RELATED SURVEY WORK WAS PERFORMED BY ME OR UNDER MY DIRECT PERSONAL SUPERVISION AND THAT I AM A DULY LICENSED PROFESSIONAL LAND SURVEYOR UNDER THE LAWS OF THE STATE OF IOWA.

SEAL COVERS THIS SHEET ONLY



[Signature] 5/7/2026
 Randall L. Rattenborg, P.L.S. License #17939 Date
 My license renewal date is December 31, 2027

List Corners to be Indexed:	Section	Township	Range
NW Cor.	5	T 90 N	R 4 W
W 1/4 Cor.			
NE Cor. NW 1/4 - SW 1/4			
SE Cor. SW 1/4 - SW 1/4			

BURRINGTON GROUP, INC.
 Civil Engineering | Land Surveying
 105 W. Main Street Manchester, Iowa 52057