



Book 2026 Page 874
 Document 2026 874 Type 06 007 Pages 1
 Date 4/13/2026 Time 1:22:19PM
 Rec Amt \$7.00

**Daneen Schindler, RECORDER/REGISTRAR
 DELAWARE COUNTY IOWA**

PREPARED BY: RANDALL L. RATTENBORG 105 WEST MAIN STREET MANCHESTER, IA 52057, 563-927-2434

UNITED STATES PUBLIC LAND SURVEY CORNER CERTIFICATE

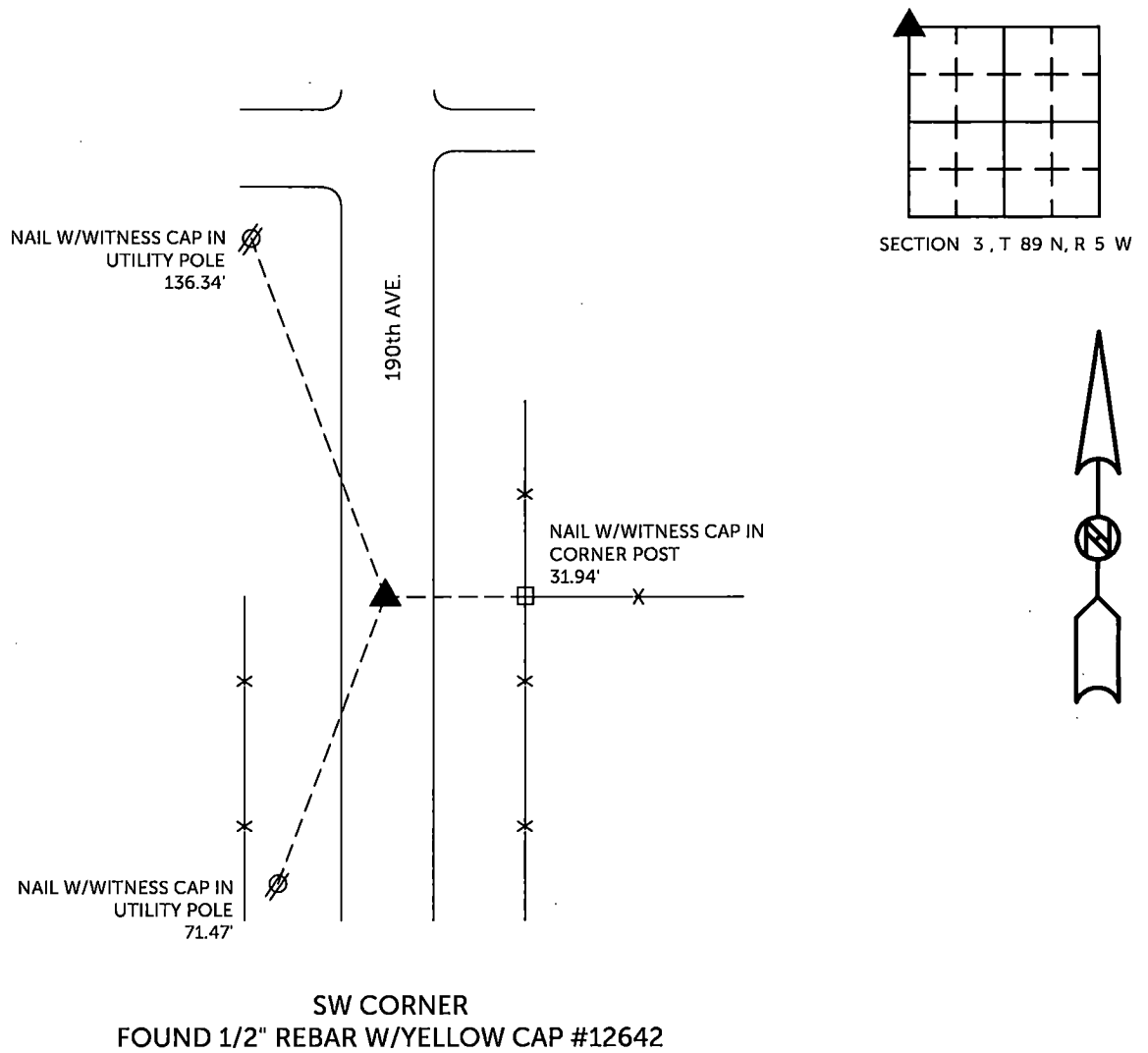
Land Survey Monuments situated in Section 3, Township 89 North, Range 5 West of the Fifth Principal Meridian,
Delaware County, Iowa.

Previously recorded in County Recorder's Office in Corner Tie Book 2, Page 66
(book, page, document number, etc.)

NW CORNER, Found 1/2" rebar w/yellow cap #12642. This Certificate being issued due to missing tie objects.

PLAN VIEW

(Show a minimum of three reference ties to durable physical objects, relevant monuments and physical conditions that will enable recovery of the corner.)

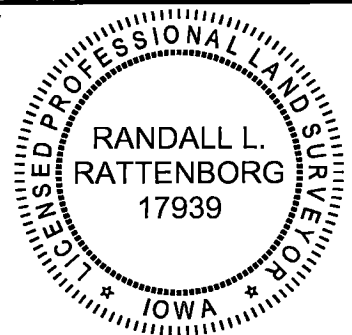


TIES ARE TO PLAT PARCEL 2026-30
 IN SECTION 3, T 89 N, R 5 W

BURRINGTON GROUP, INC. PROJECT NO. 26-149

I HEREBY CERTIFY THAT THIS LAND SURVEYING DOCUMENT
 WAS PREPARED AND THE RELATED SURVEY WORK WAS
 PERFORMED BY ME OR UNDER MY DIRECT PERSONAL
 SUPERVISION AND THAT I AM A DULY LICENSED PROFESSIONAL
 LAND SURVEYOR UNDER THE LAWS OF THE STATE OF IOWA.

SEAL COVERS THIS SHEET ONLY



[Signature] 4/13/2026
 Randall L. Rattenborg, P.L.S. License #17939 Date
 My license renewal date is December 31, 2027

List Corners to be Indexed: Section Township Range
 NW CORNER 3 T 89N R 5 W

BURRINGTON GROUP, INC.
 Civil Engineering | Land Surveying
 105 W. Main Street Manchester, Iowa 52057