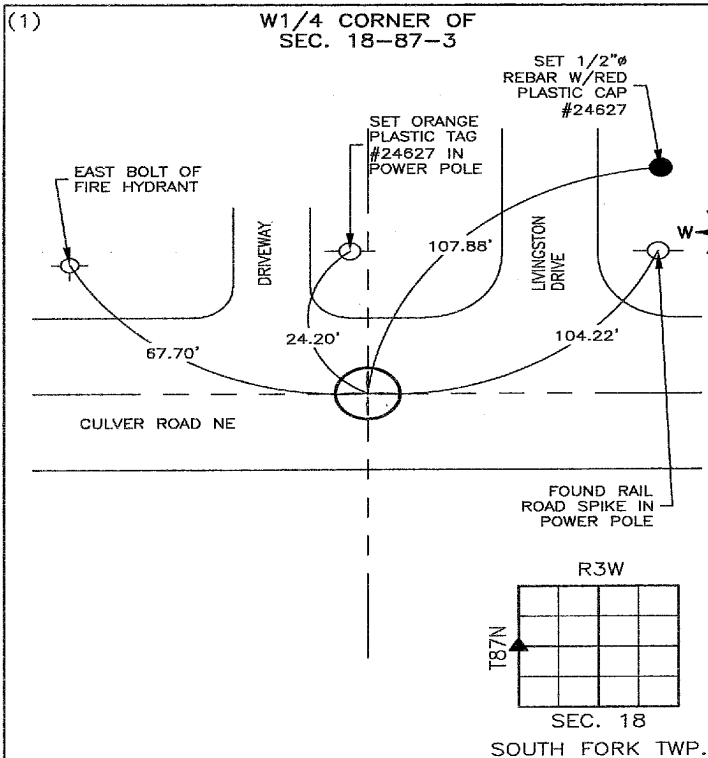


Recorded: 2/9/2026 at 11:06:32.0 AM  
County Recording Fee: \$7.00  
Iowa E-Filing Fee: \$3.13  
Combined Fee: \$10.13  
Revenue Tax: \$0.00  
Delaware County, Iowa  
Daneen Schindler RECORDER  
BK: 2026 PG: 313

PREPARED BY/RETURN TO: FEHR GRAHAM, 221 EAST MAIN ST., SUITE 301 MANCHESTER, IA 52057 - PH: 563.927.2060

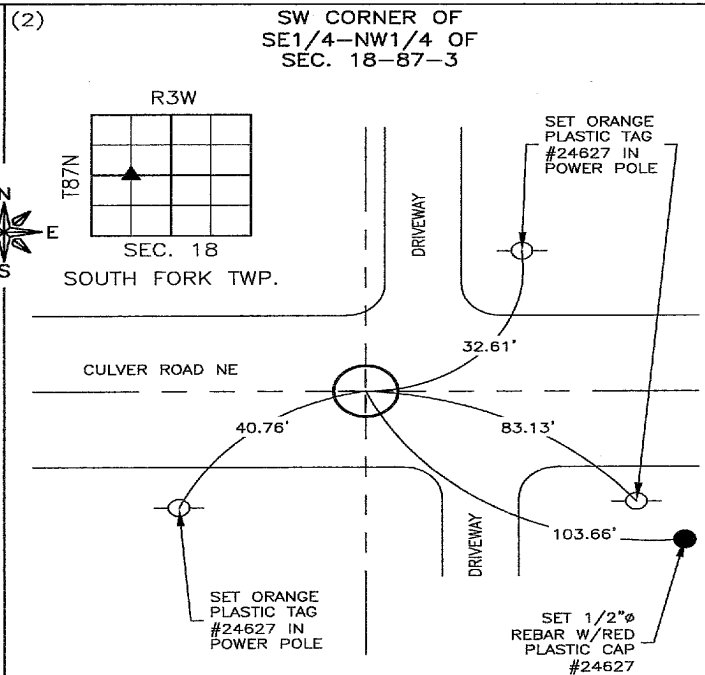
UNITED STATES PUBLIC LAND SURVEY CORNER CERTIFICATE  
DELAWARE COUNTY, IOWA  
SECTION 18-T87N-R3W



PREVIOUSLY RECORDED:  
NO PREVIOUSLY RECORDED CERTIFICATE FOUND.

PURPOSE OF CERTIFICATE:  
SET MONUMENT ONLINE AT MIDPOINT BETWEEN NORTHWEST AND SOUTHWEST CORNERS OF SECTION.

MONUMENT DESCRIPTION AND ESTABLISHMENT:  
SET MAG-NAIL W/ STAINLESS STEEL WASHER #24627.



PREVIOUSLY RECORDED:  
NO PREVIOUSLY RECORDED CERTIFICATE FOUND.

PURPOSE OF CERTIFICATE:  
SET MONUMENT ON QUARTER SECTION LINE AT THE INTERSECTION OF A NORTH-SOUTH FENCE EXTENSION.

MONUMENT DESCRIPTION AND ESTABLISHMENT:  
SET MAG-NAIL W/ STAINLESS STEEL WASHER #24627.

CORNERS TO BE INDEXED

CORNER	SECTION	TOWNSHIP	RANGE
(1) W1/4	18	87N	3W
(2) SW of SE1/4-NW1/4	18	87N	3W



I hereby certify that this land surveying document was prepared by me or under my direct personal supervision and that I am a duly licensed Land Surveyor under the laws of the State of Iowa.

*Adam J. Recker* 2-9-2026  
Adam J. Recker, P.L.S.  
License Number: 24627  
My license renewal date is December 31, 2027.  
Sheets covered by this seal: THIS SHEET ONLY

**FEHR GRAHAM**  
ENGINEERING & ENVIRONMENTAL  
© 2026 FEHR GRAHAM

ILLINOIS  
IOWA  
WISCONSIN

G:\C3D\22-390 Hopkinton Streets\22-390 SV-IA-SCC KL.dwg

JOB NUMBER:  
22-390

SHEET NUMBER:  
1 of 1