



Book 2026 Page 212
Document 2026 212 Type 06 007 Pages 1
Date 1/29/2026 Time 10:15:25AM
Rec Amt \$7.00

Daneen Schindler, RECORDER/REGISTRAR
DELAWARE COUNTY IOWA

Prepared by: SCHNEIDER Land Surveying and Planning, Inc. P.O. Box 128 Farley, Iowa 52046 563-744-3631

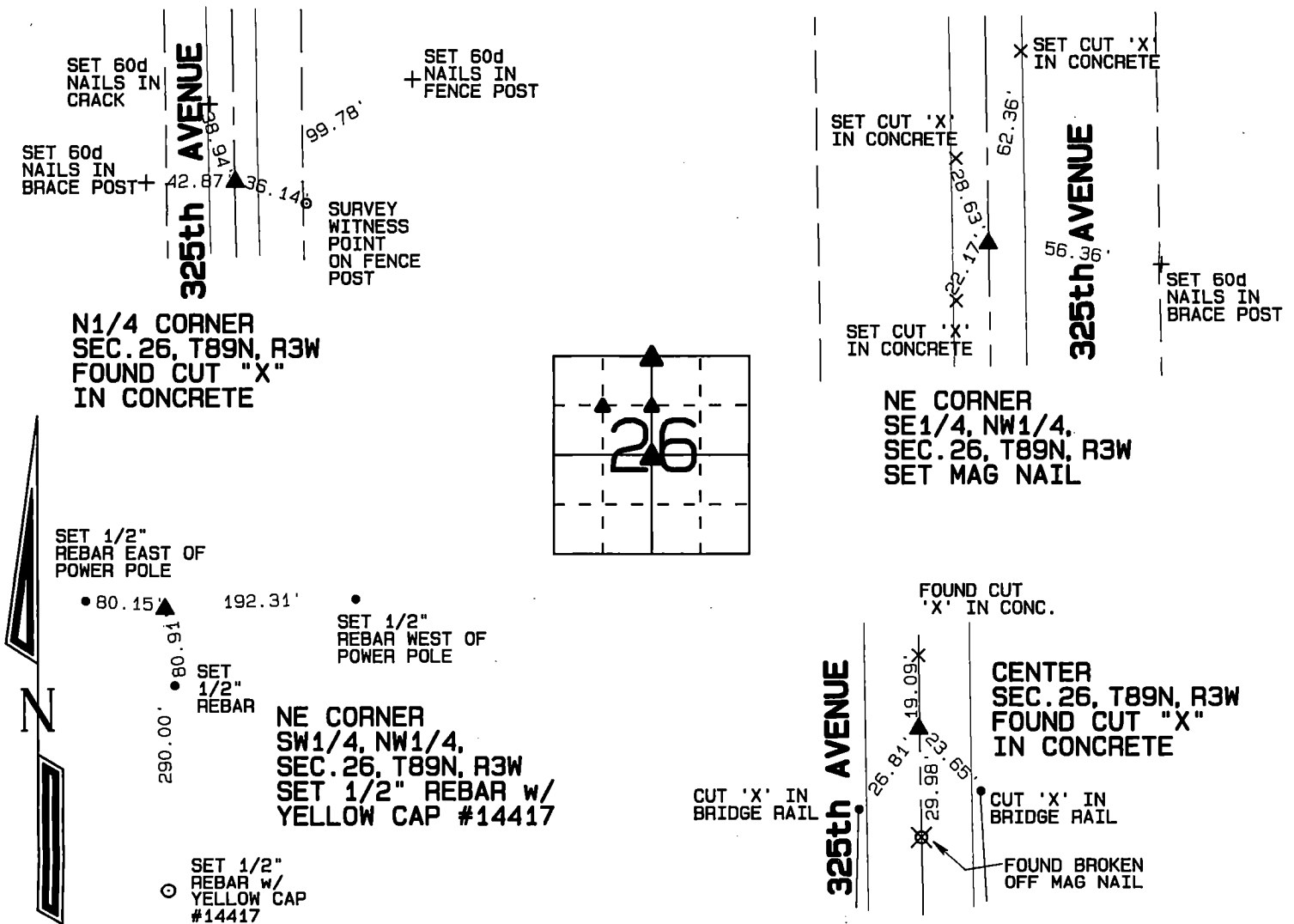
UNITED STATES PUBLIC LAND SURVEY CORNER CERTIFICATE OF

Land Survey Monuments situated in Section 26, Township 89 North, Range 3 West
of the Fifth Principal Meridian, Delaware County, Iowa.
Previously recorded (NONE OF RECORD)

(BOOK, PAGE / INST. NO. / CABINET, SLIDE)

Monument Description and Remarks: A CUT 'X' IN CONCRETE WAS FOUND AT THE N1/4 CORNER OF SECTION 26, T89N, R3W AS ILLUSTRATED ON A PLAT OF SURVEY FILED IN BOOK 2013 AT PAGE 1574. THE NE CORNER OF THE SE1/4 OF THE NW1/4 OF SEC. 26, T89N, R3W WAS PLACED AS ILLUSTRATED ON A PLAT OF SURVEY FILED IN BOOK 2018 AT PAGE 180. A CUT 'X' IN CONCRETE WAS FOUND AT THE CENTER OF SEC. 26, T89N, R3W AS ILLUSTRATED ON A PLAT OF SURVEY FILED IN BOOK 2018 AT PAGE 180. THE NE CORNER OF THE SW1/4 OF THE NW1/4 OF SEC. 26, T89N, R3W WAS PLACED AS ILLUSTRATED ON A PLAT OF SURVEY FILED IN BOOK 2013 AT PAGE 1784.

PLAN - VIEW



I hereby certify that this land surveying document was prepared and the related survey work was performed by me or under my direct personal supervision and that I am a duly licensed Land Surveyor under the laws of the State of Iowa.

David P. Schneider P.L.S. P14417

Date: 1/26/2026

My license renewal date is December 31, 2027.

Pages or sheets covered by this seal: THIS SHEET ONLY

SCHNEIDER
Land Surveying & Planning, Inc.

P.O. Box 128 Farley, Iowa 52046
Ph. #563-744-3631 daves@yousq.net



List Corners to be Indexed

Corners	Section	Twp	Range
N1/4 CORNER	26	89N	3W
NE CORNER SE1/4, NW1/4	26	89N	3W
NE CORNER SW1/4, NW1/4	26	89N	3W
CENTER	26	89N	3W

JOB NO. 2928