



Book 2026 Page 198
Document 2026 198 Type 06 007 Pages 1
Date 1/27/2026 Time 4:01:46PM
Rec Amt \$7.00

Daneen Schindler, RECORDER/REGISTRAR
DELAWARE COUNTY IOWA

PREPARED BY: RANDALL L. RATTENBORG 105 WEST MAIN STREET MANCHESTER, IA 52057, 563-927-2434

UNITED STATES PUBLIC LAND SURVEY CORNER CERTIFICATE

Land Survey Monuments situated in Section 20 , Township 88 North, Range 4 West of the Fifth Principal Meridian,
Delaware County, Iowa.

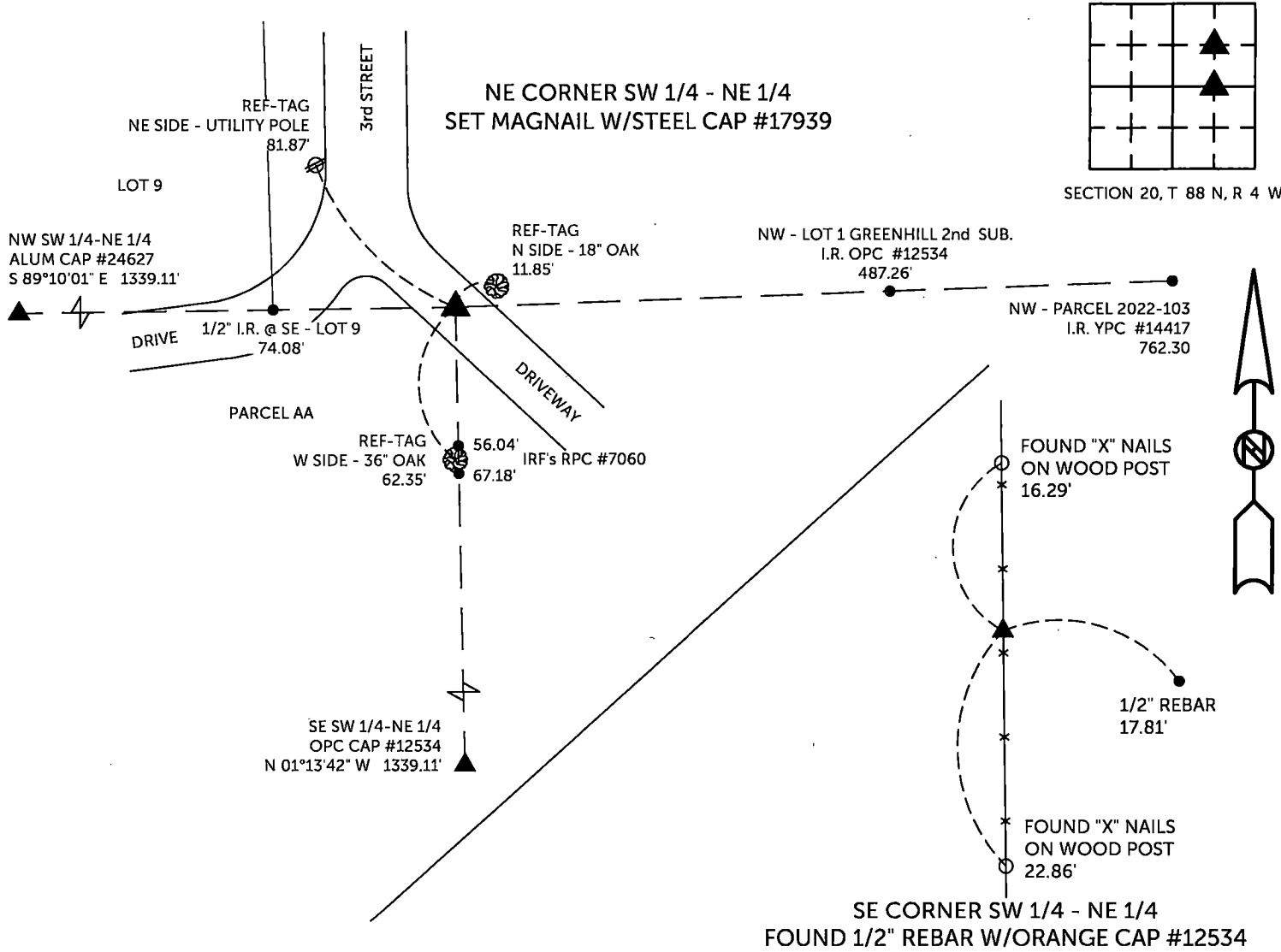
Previously recorded in County Recorder's Office in NE CORNER SW 1/4-NE 1/4-BOOK 2009, PAGE 2955
(book, page, document number, etc.)

SE CORNER SW 1/4 - NE 1/4, Found 1/2" rebar w/orange cap #12534 as shown in plat of Greenhill First Addition (Book 2010, Page 3576).

NE CORNER SW 1/4 - NE 1/4, Set Magnail w/steel cap #17939. Used a line from a 1/2" rebar w/aluminum cap #24627 at the NW Corner SW 1/4 - NE 1/4 (Book 2019, Page 3564) and a 1/2" iron rod at the SE corner of Lot 9 of the subdivision of the N 1/2 of the NE 1/4 (Plat Book 3, Page 30) extended east. Also used a line from a 1/2" rebar w/yellow cap #14417 at the NW corner of Parcel 2022-103 (Book 2022, Page 2918) to a 1/2" rebar w/orange cap #12534 at the NW Corner of Lot 1 of Greenhill Second Addition (Book 2013, Page 2566) and extended westerly. Both of these lies were extended to a North-South line from a 1/2" rebar w/orange cap #12534 at the SE Corner SW 1/4 - NE 1/4 through the monuments along the Easterly Line of Parcel AA (Book 2011, Page 2274).


PLAN VIEW

(Show a minimum of three reference ties to durable physical objects, relevant monuments and physical conditions that will enable recovery of the corner.)

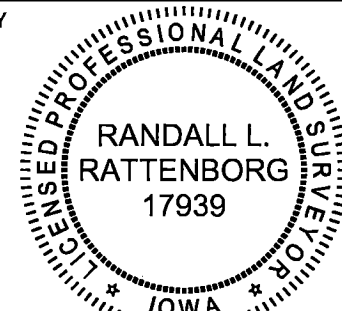


TIES ARE TO PLAT PARCEL AA, GREENHILL 2ND SUB. IN SECTION 20, T 88 N, R 4 W BURRENTRON GROUP, INC. PROJECT NO. 25-069

I HEREBY CERTIFY THAT THIS LAND SURVEYING DOCUMENT WAS PREPARED AND THE RELATED SURVEY WORK WAS PERFORMED BY ME OR UNDER MY DIRECT PERSONAL SUPERVISION AND THAT I AM A DULY LICENSED PROFESSIONAL LAND SURVEYOR UNDER THE LAWS OF THE STATE OF IOWA.


Randall L. Rattenborg, P.L.S. License #17939 Date 1/26/2026
My license renewal date is December 31, 2027
List Corners to be Indexed: Section Township Range
SW CORNER NW 1/4 - NW 1/4 20 T 88 N R 4 W
SE CORNER NW 1/4 - NW 1/4

SEAL COVERS THIS SHEET ONLY



BURRENTRON GROUP, INC.
Civil Engineering | Land Surveying
105 W. Main Street Manchester, Iowa 52057