



Book 2026 Page 197
Document 2026 197 Type 06 007 Pages 1
Date 1/27/2026 Time 4:01:32PM
Rec Amt \$7.00

Daneen Schindler, RECORDER/REGISTRAR
DELAWARE COUNTY IOWA

PREPARED BY: RANDALL L. RATTENBORG 105 WEST MAIN STREET MANCHESTER, IA 52057, 563-927-2434

UNITED STATES PUBLIC LAND SURVEY CORNER CERTIFICATE

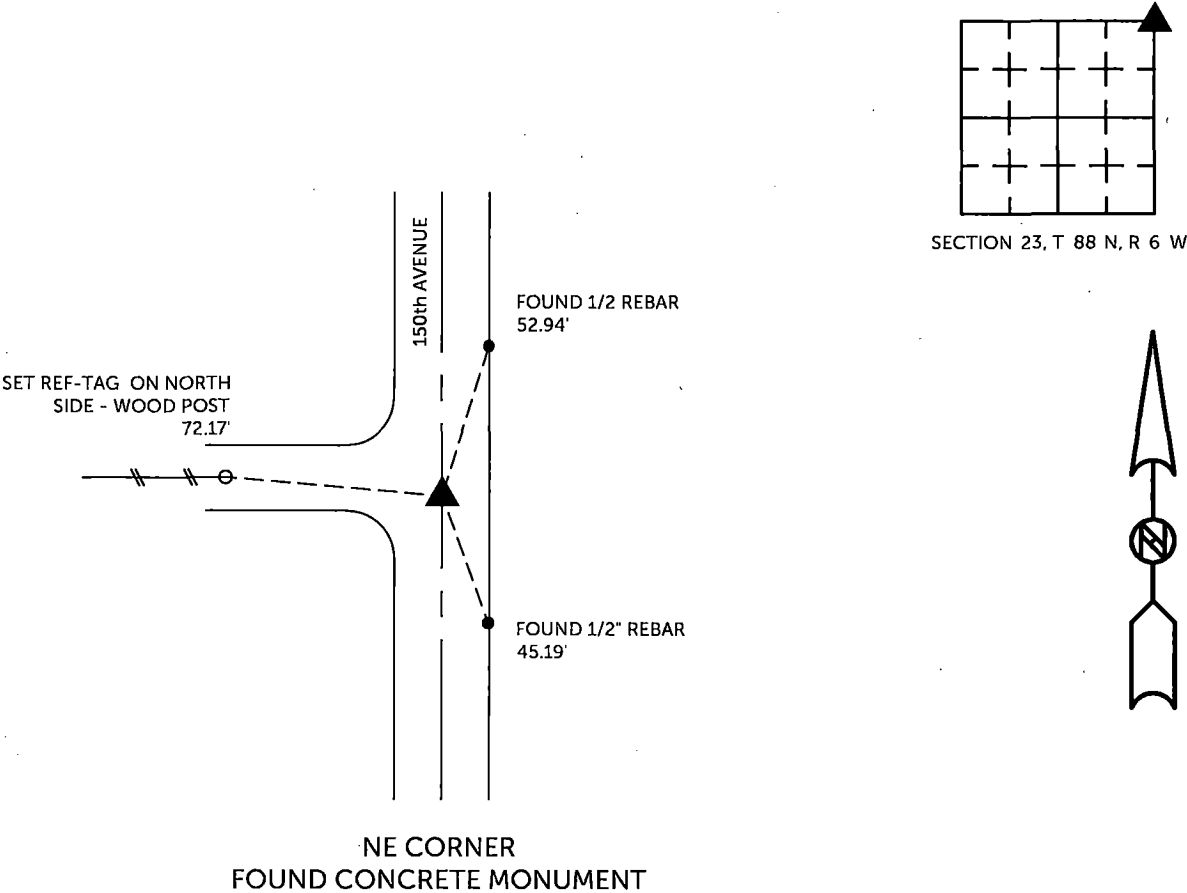
Land Survey Monuments situated in Section 23 , Township 88 North, Range 6 West of the Fifth Principal Meridian,
Delaware County, Iowa.

Previously recorded in County Recorder's Office in Book 2013, Page 1344
(book, page, document number, etc.)

NE CORNER, Found concrete monument set by IDOT. This Corner Certificate being issued due to missing tie object.

PLAN VIEW

(Show a minimum of three reference ties to durable physical objects, relevant monuments and physical conditions that will enable recovery of the corner.)

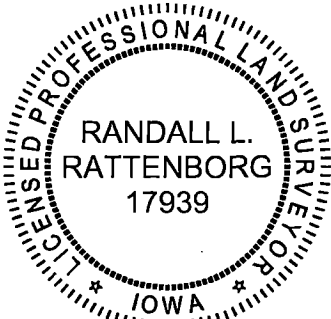


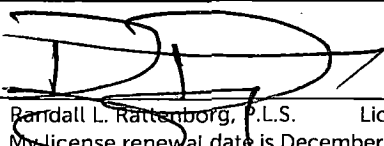
TIES ARE TO PLAT Retracement Survey in SE 1/4 - NE 1/4
IN SECTION 23, T 88 N, R 6 W

BURRINGTON GROUP, INC. PROJECT NO.26-002

I HEREBY CERTIFY THAT THIS LAND SURVEYING DOCUMENT
WAS PREPARED AND THE RELATED SURVEY WORK WAS
PERFORMED BY ME OR UNDER MY DIRECT PERSONAL
SUPERVISION AND THAT I AM A DULY LICENSED PROFESSIONAL
LAND SURVEYOR UNDER THE LAWS OF THE STATE OF IOWA.

SEAL COVERS THIS SHEET ONLY




Randall L. Rattenborg, P.L.S. License #17939 Date 1/27/2026
My license renewal date is December 31, 2027
List Corners to be Indexed: Section Township Range
NE Corner 23 T 88N R 6 W

 **BURRINGTON GROUP, INC.**
Civil Engineering · Land Surveying
105 W. Main Street Manchester, Iowa 52057