



Book 2025 Page 2396

Document 2025 2396 Type 06 007 Pages 1  
Date 9/05/2025 Time 9:45:25AM  
Rec Amt \$7.00

Daneen Schindler, RECORDER/REGISTRAR  
DELAWARE COUNTY IOWA

PREPARED BY: RANDALL L. RATTENBORG 105 WEST MAIN STREET MANCHESTER, IA 52057, 563-927-2434

UNITED STATES PUBLIC LAND SURVEY CORNER CERTIFICATE

Land Survey Monuments situated in Section 33 , Township 89 North, Range 5 West of the Fifth Principal Meridian,  
Delaware County, Iowa.

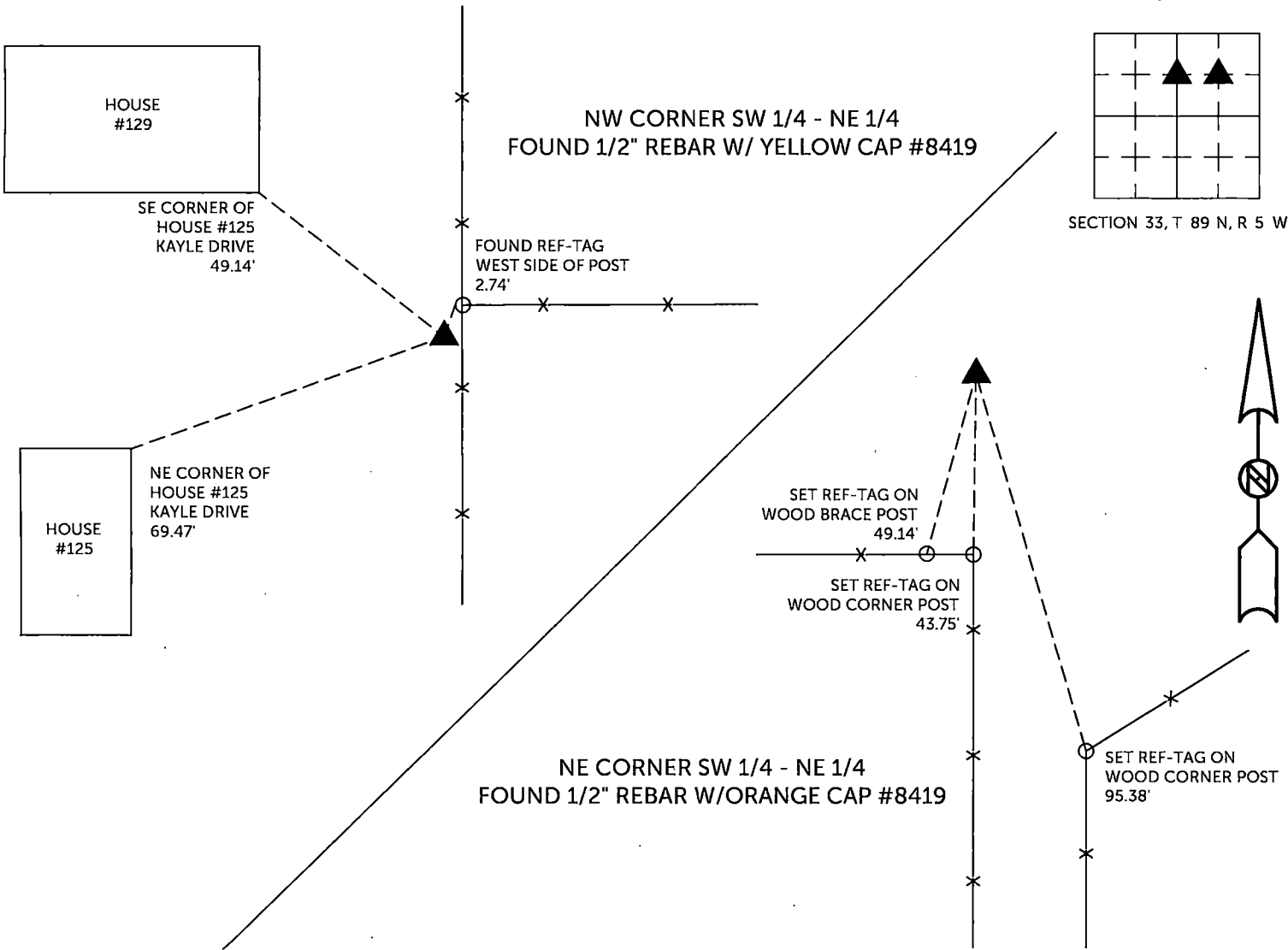
Previously recorded in County Recorder's Office in BOOK 2001, PAGE 3910 & 3914  
(book, page, document number, etc.)

NW CORNER SW 1/4 - NE 1/4, Found 1/2" rebar w/yellow cap #8419. (Book 2001, Page 3914) This certificate is being issued due to missing tie objects.

NE CORNER SW 1/4 - NE 1/4, Found 1/2" rebar w/orange cap #8419. (Book 2001, Page 3910) This certificate is being issued due to missing tie objects.

PLAN VIEW

(Show a minimum of three reference ties to durable physical objects, relevant monuments and physical conditions that will enable recovery of the corner.)



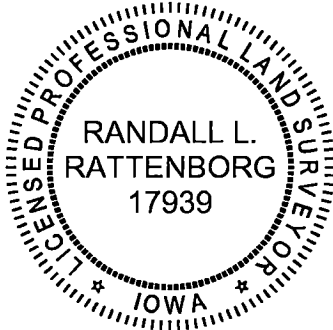
TIES ARE TO PLAT WINLEN SECOND SUBDIVISION  
IN SECTION 33, T 89 N, R 5 W

BURRINGTON GROUP, INC. PROJECT NO. 25-075

I HEREBY CERTIFY THAT THIS LAND SURVEYING DOCUMENT  
WAS PREPARED AND THE RELATED SURVEY WORK WAS  
PERFORMED BY ME OR UNDER MY DIRECT PERSONAL  
SUPERVISION AND THAT I AM A DULY LICENSED PROFESSIONAL  
LAND SURVEYOR UNDER THE LAWS OF THE STATE OF IOWA.

	9/4/2025
Randall L. Rattenborg, P.L.S.	License #17939
My license renewal date is December 31, 2025	
List Corners to be Indexed:	Section Township Range
NW CORNER SW 1/4 - NE 1/4	33 T 89N R 5 W
NE CORNER SW 1/4 - NE 1/4	

SEAL COVERS THIS SHEET ONLY



BURRINGTON GROUP, INC.  
Civil Engineering | Land Surveying  
105 W. Main Street Manchester, Iowa 52057