



Book 2025 Page 2055

Document 2025 2055 Type 06 007 Pages 1  
Date 8/05/2025 Time 10:15:32AM  
Rec Amt \$7.00

Daneen Schindler, RECORDER/REGISTRAR  
DELAWARE COUNTY IOWA

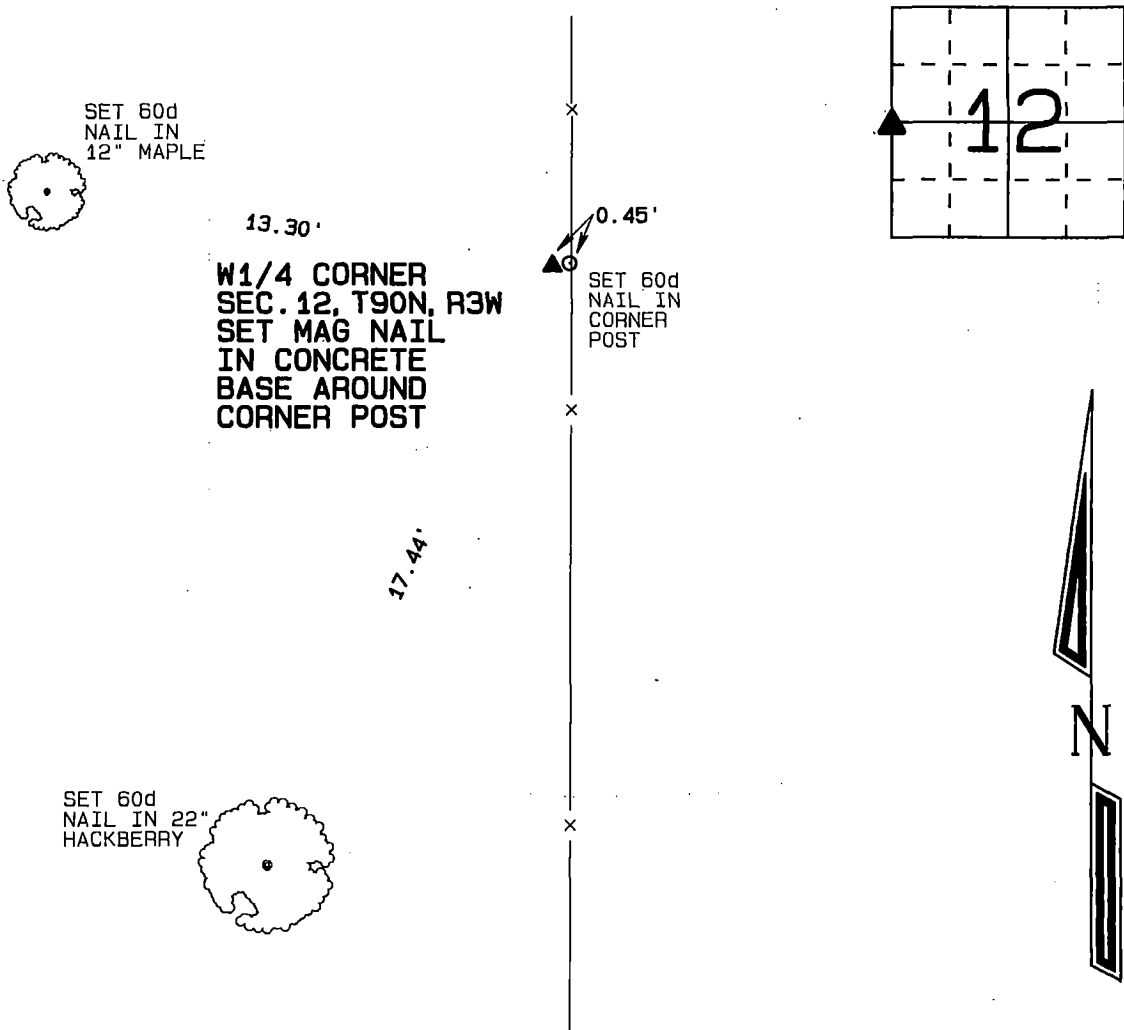
Prepared by: SCHNEIDER Land Surveying and Planning, Inc. P.O. Box 128 Farley, Iowa 52046 563-744-3631

**UNITED STATES PUBLIC LAND SURVEY CORNER CERTIFICATE OF**

Land Survey Monuments situated in Section 12, Township 90 North, Range 3 West  
of the Fifth Principal Meridian, Delaware County, Iowa.  
Previously recorded (NONE OF RECORD)  
(BOOK, PAGE / INST. NO. / CABINET, SLIDE)

Monument Description and Remarks:  
NO STONE OF MONUMENT WAS FOUND AT THE W1/4 CORNER OF SEC.12, T90N, R3W. A MAG NAIL WAS PLACED IN THE CONCRETE  
BASE AROUND THE CORNER POST.

**PLAN - VIEW**



I hereby certify that this land surveying document was prepared and the related survey work was performed by me or under my direct personal supervision and that I am a duly licensed Land Surveyor under the laws of the State of Iowa.

*David P. Schneider* 6/25/2025

David P. Schneider P.L.S. P14417 Date:  
My license renewal date is December 31, 2025.  
Pages or sheets covered by this seal: THIS SHEET ONLY

**SCHNEIDER**  
Land Surveying & Planning, Inc.  
P.O. Box 128 Farley, Iowa 52046  
Ph. #563-744-3631 daves@yousq.net



List Corners to be Indexed			
Corners	Section	Twp	Range
W1/4 CORNER	12	90N	3W

JOB NO. 2584iae1k