

Daneen Schindler, RECORDER/REGISTRAR
DELAWARE COUNTY IOWA

Prepared by: SCHNEIDER Land Surveying and Planning, Inc. P.O. Box 128 Farley, Iowa 52046 563-744-3631

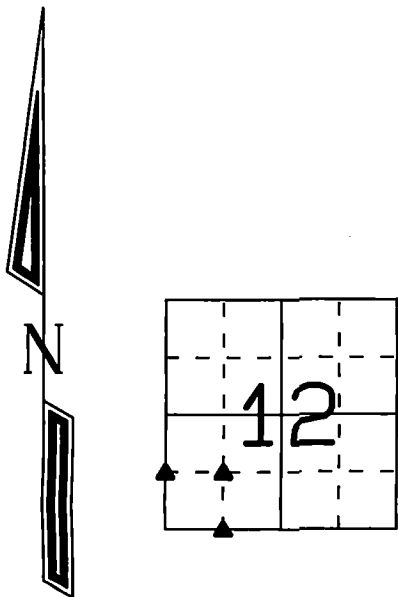
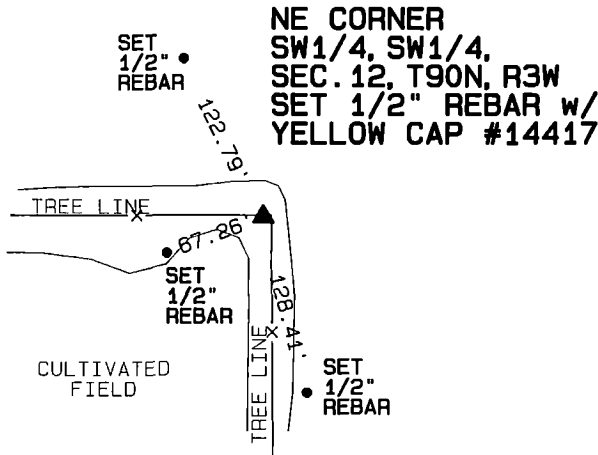
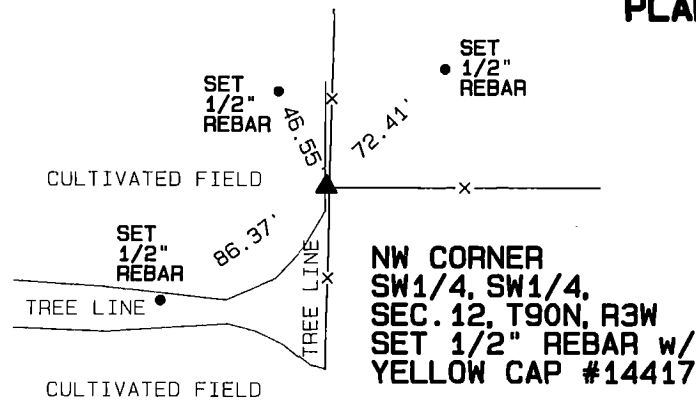
UNITED STATES PUBLIC LAND SURVEY CORNER CERTIFICATE OF

Land Survey Monuments situated in Section 12, Township 90 North, Range 3 West
of the Fifth Principal Meridian, Delaware County, Iowa.
Previously recorded (NONE OF RECORD)

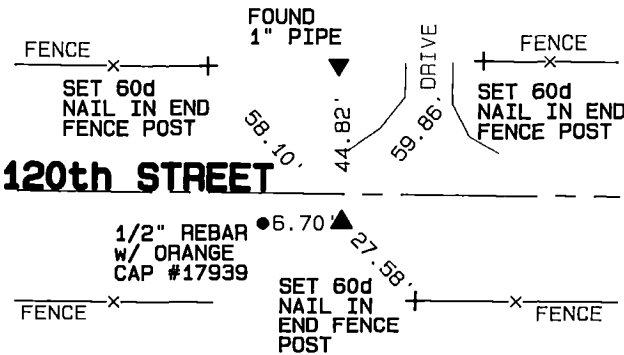
(BOOK, PAGE / INST. NO. / CABINET, SLIDE)

Monument Description and Remarks: THE NW CORNER OF THE SW1/4 OF THE SW1/4 OF SEC. 12, T90N, R3W WAS PLACED AT THE MIDPOINT OF A LINE FROM THE SW CORNER TO THE W1/4 CORNER OF SAID SECTION 12 AND IN LINE WITH THE FENCES TO THE NORTH, SOUTH AND EAST. THE SE CORNER OF THE SW1/4 OF THE SW1/4 OF SECTION 12, T90N, R3W WAS PLACED ON THE INTERSECTION OF THE NORTH LINE OF SECTION 13, T90N, R3W AS MONUMENTED WITH THE WEST LINE OF THE SE1/4 OF THE SW1/4 OF SECTION 12, T90N, R3W AS MONUMENTED AND OCCUPIED. THE CORNER WAS PLACED 6.7' EAST OF A 1/2" REBAR w/ ORANGE CAP #17939 PLACED AT THE MIDPOINT OF A LINE FROM THE NW CORNER TO THE N1/4 CORNER OF SAID SECTION 13. THE NE CORNER OF THE SW1/4 OF THE SW1/4 OF SEC. 12, T90N, R3W WAS PLACED IN LINE WITH THE WEST LINE OF THE SE1/4 OF THE SW1/4 OF SECTION 12, T90N, R3W AS MONUMENTED AND OCCUPIED AND IN LINE WITH THE OCCUPATION LOCATED WEST OF THE CORNER.

PLAN - VIEW



SE CORNER
SW1/4, SW1/4,
SEC. 12, T90N, R3W
SET 1/2" REBAR w/
YELLOW CAP #14417
6.7' EAST OF 1/2"
REBAR w/ ORANGE
CAP #17939



I hereby certify that this land surveying document was prepared and the related survey work was performed by me or under my direct personal supervision and that I am a duly licensed Land Surveyor under the laws of the State of Iowa.

David P. Schneider P.L.S. P14417 Date: 6/25/2026
My license renewal date is December 31, 2025.
Pages or sheets covered by this seal: THIS SHEET ONLY

SCHNEIDER
Land Surveying & Planning, Inc.
P.O. Box 128 Farley, Iowa 52046
Ph. #563-744-3631 daves@yousq.net



List Corners to be Indexed

Corners	Section	Twp	Range
NW CORNER SW1/4, SW1/4	12	90N	3W
NE CORNER SW1/4, SW1/4	12	90N	3W
SE CORNER SW1/4, SW1/4	12	90N	3W

JOB NO. 2584-2025