

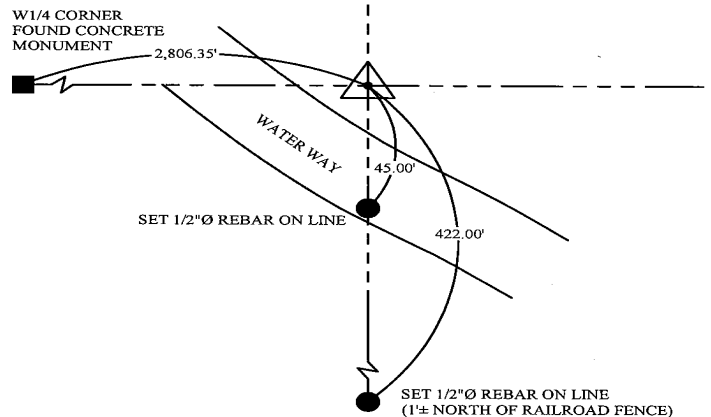
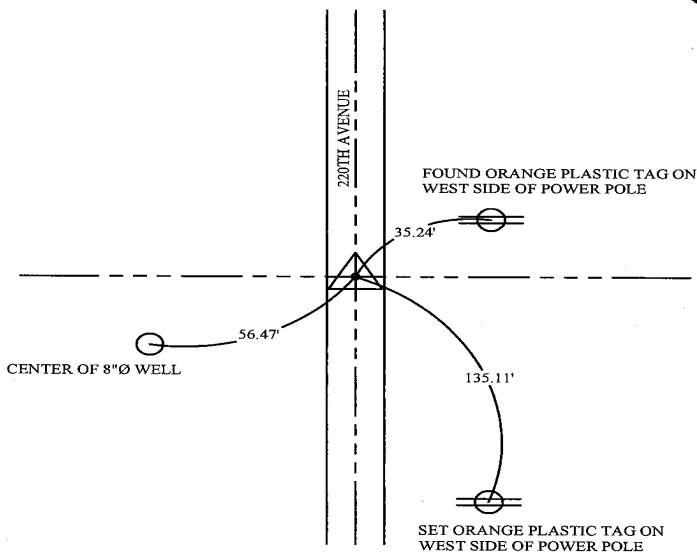
Recorded: 7/30/2025 at 11:24:57.0 AM
County Recording Fee: \$7.00
Iowa E-Filing Fee: \$3.00
Combined Fee: \$10.00
Revenue Tax: \$0.00
Delaware County, Iowa
Daneen Schindler RECORDER
BK: 2025 PG: 2005

PREPARED BY/RETURN TO: MOORE LAND SERVICES, L.L.C., 13789 DOMINO ROAD, ELKADER, IA 52043 - PH: (563) 329-1051

UNITED STATES PUBLIC LAND SURVEY CORNER CERTIFICATE
SECTION 31, TOWNSHIP 89 NORTH, RANGE 4 WEST
OF THE FIFTH PRINCIPAL MERIDIAN, DELAWARE COUNTY, IOWA

W1/4 CORNER
SEC. 31-T89N-R4W

CENTER OF
SEC. 31-T89N-R4W



PREVIOUSLY RECORDED:

IN BK. 2022, PG. 2144, IN COUNTY RECORDER'S OFFICE.

PURPOSE OF CERTIFICATE:

FILING CERTIFICATE DUE TO MISSING TIES FROM PREVIOUS
CERTIFICATE.

MONUMENT DESCRIPTION AND ESTABLISHMENT:

FOUND CONCRETE MONUMENT

PREVIOUSLY RECORDED:

IN BK. 2007, PG. 1278, IN COUNTY RECORDER'S OFFICE.

PURPOSE OF CERTIFICATE:

FILING CERTIFICATE DUE TO MISSING TIES FROM PREVIOUS
CERTIFICATE.

MONUMENT DESCRIPTION AND ESTABLISHMENT:

FOUND 1/2"Ø REBAR WITH RED PLASTIC CAP #7060

CORNERS TO BE INDEXED

W1/4 CORNER OF SECTION 31, TOWNSHIP 89, RANGE 4 WEST
&
CENTER OF SECTION 31, TOWNSHIP 89, RANGE 4 WEST

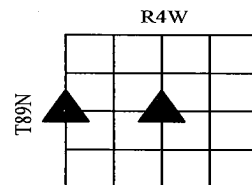


I hereby certify that this land surveying document was prepared
and the related survey work was performed by me or under my
direct personal supervision and that I am a duly licensed Land
Surveyor under the laws of the State of Iowa.

Phillip J. Moore

Phillip J. Moore, P.L.S.
License Number: 28139
My license renewal date is December 31, 2026.
Sheets covered by this seal: SHEET 1 OF 1

7-30-2025
Date



SECTION 31
ONEIDA TWP.

MOORE LAND SERVICES, L.L.C.

JOB NUMBER: 25-015

SURVEY COMPLETED ON: JULY 9, 2025

SHEET NUMBER: 1 of 1