




Book 2025 Page 1975

Document 2025 1975 Type 06 007 Pages 1
Date 7/25/2025 Time 11:46:32AM
Rec Amt \$7.00

Daneen Schindler, RECORDER/REGISTRAR
DELAWARE COUNTY IOWA

Prepared By:  Terry L. Koelker, Buesing & Associates, 1212 Locust St. Dubuque, IA (563) 556-4389

SLSI 9-94

UNITED STATES PUBLIC LAND SURVEY CORNER CERTIFICATE
OF

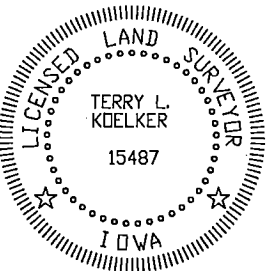
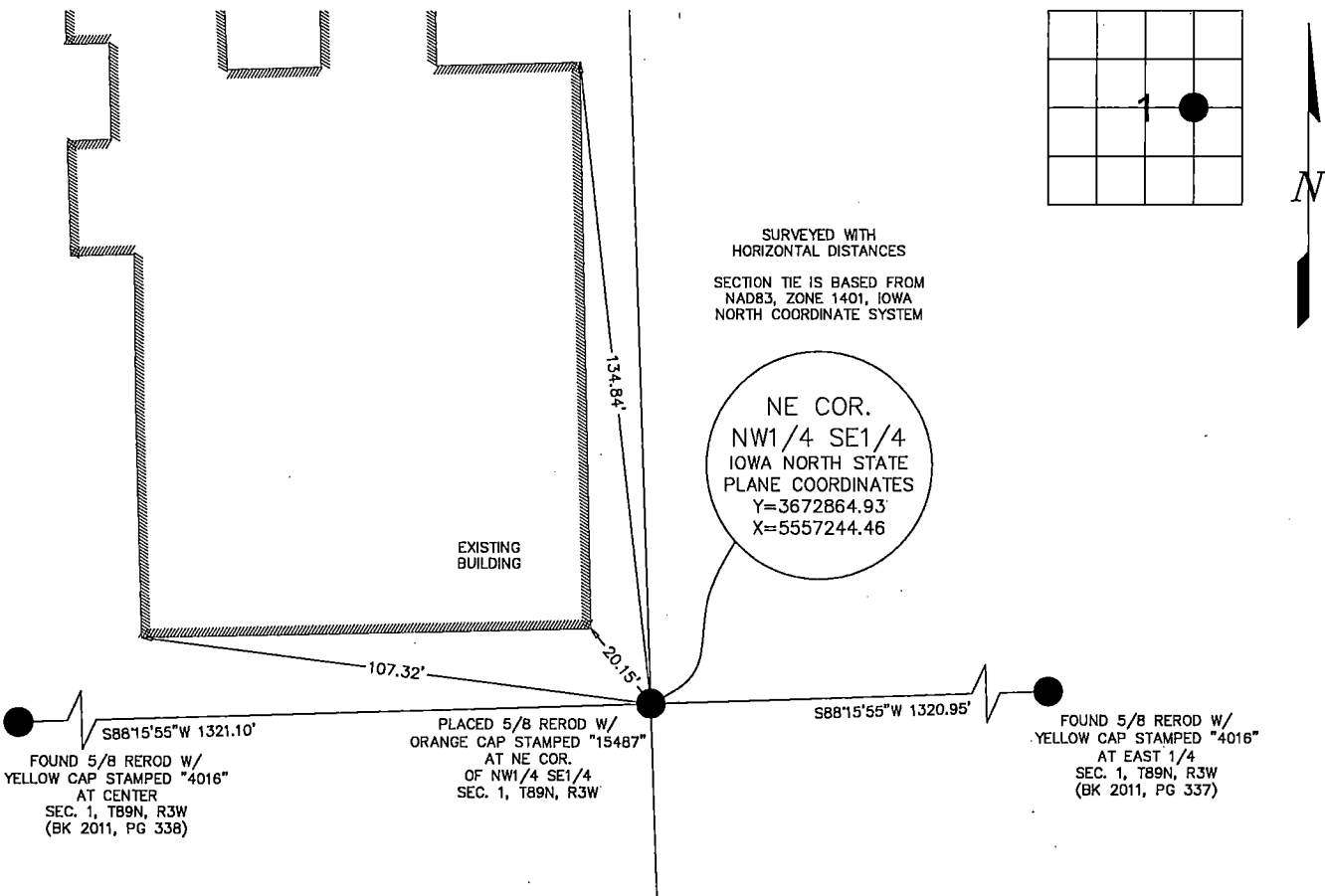
Land Survey Monuments situated in Section 1, Township 89N, Range 3W, of the Fifth Principal Meridian, DELAWARE County, Iowa.
Previously recorded in _____ in County Recorder's Office.
(book, page, document number, etc.)

(Show reason for preparing this certificate, the evidence and detailed procedures used in establishing the corner positions and monumentation found or placed.)

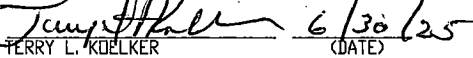
Monument Description and Remarks: SET 5/8" REROD W/ ORANGE CAP STAMPED "15487" AT NE CORNER OF NW1/4 SE1/4 OF SAID SECTION, BURIED 12".

PLAN - VIEW

(Show a minimum of three reference ties to durable physical objects, relevant monuments and physical conditions that will enable recovery of the corner.)



I HEREBY CERTIFY THAT THIS LAND SURVEYING DOCUMENT WAS PREPARED AND THE RELATED SURVEY WORK WAS PERFORMED BY ME OR UNDER MY DIRECT PERSONAL SUPERVISION AND THAT I AM A DULY LICENSED LAND SURVEYOR UNDER THE LAWS OF THE STATE OF IOWA.


TERRY L. KOELKER (DATE) 6/30/25

LICENSE NUMBER 15487

MY LICENSE RENEWAL DATE IS DECEMBER 31, 2025

List Corners	Section	Indexed Twp	Range
NE COR.	1	89N	3W
NW1/4 SE1/4			

BUESING
ASSOCIATES INC.
ENGINEERS AND SURVEYORS

1212 LOCUST ST, DUBUQUE, IA
(563) 556-4389

MONUMENT RECORD

COUNTY: DELAWARE
TOWNSHIP: BREMEN

DATE PLOTTED: 7/22/2025
DATE REVISED:

FIELD BOOK #
PAGE # SURVEYED

DRAWING
#25133-21-SECTIE