

Daneen Schindler, RECORDER/REGISTRAR
DELAWARE COUNTY IOWA

PREPARED BY: RANDALL L. RATTENBORG 105 WEST MAIN STREET MANCHESTER, IA 52057, 563-927-2434

UNITED STATES PUBLIC LAND SURVEY CORNER CERTIFICATE

Land Survey Monuments situated in Section 17 , Township 90 North, Range 5 West of the Fifth Principal Meridian,
Delaware County, Iowa.

Previously recorded in County Recorder's Office in None
(book, page, document number, etc.)

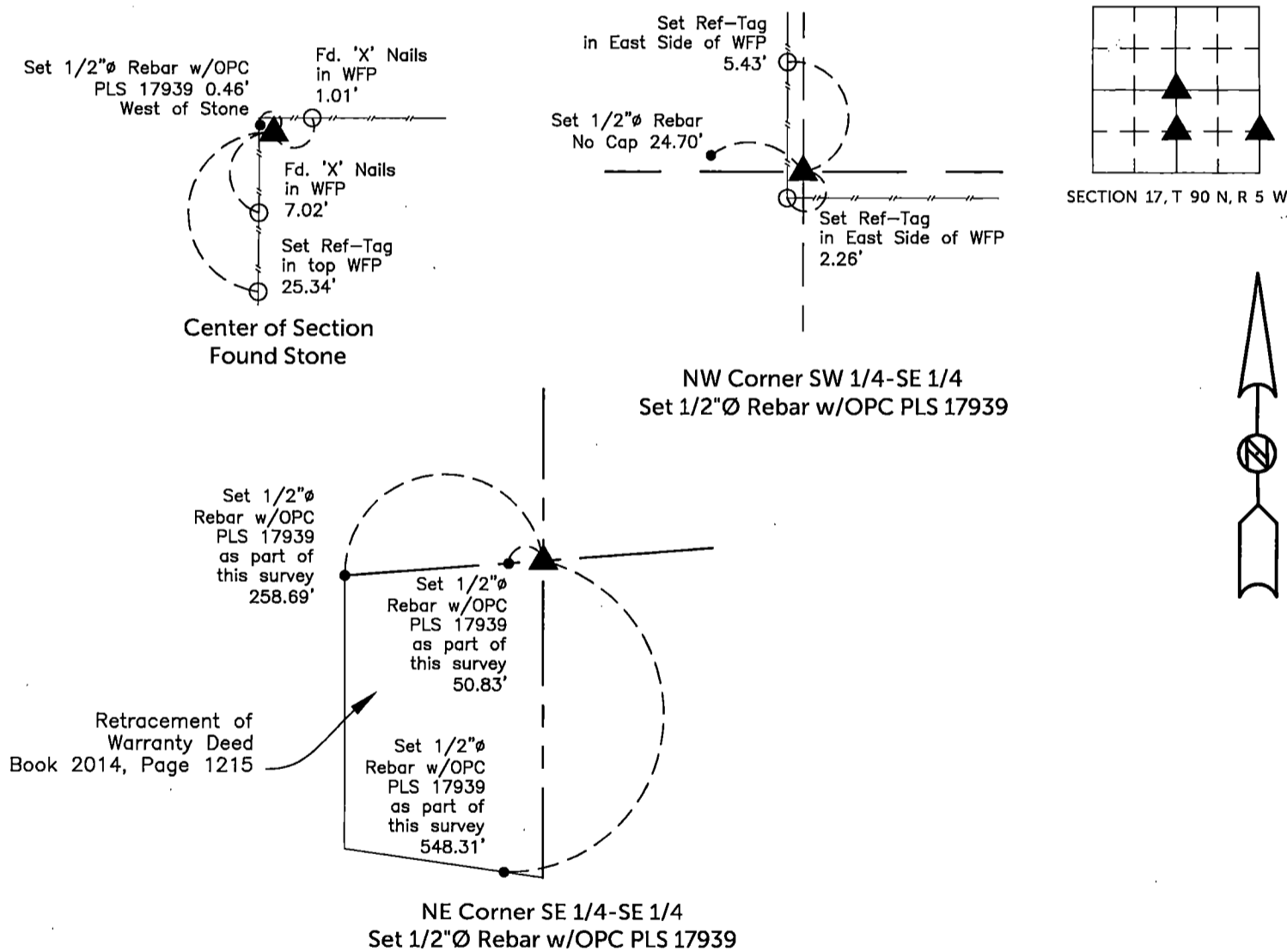
Center of Section; Found Limestone. Set 1/2"Ø Rebar 0.46 feet west of stone as a memorial to stone.

NW Corner SW 1/4-SE 1/4; Set 1/2"Ø Rebar with orange plastic cap equidistant and on-line between the S 1/4 corner and the
Center of Section.

NE Corner SE 1/4-SE 1/4; Set 1/2"Ø Rebar with orange plastic cap equidistant and on-line between the E 1/4 corner and the
SE Corner.

PLAN VIEW

(Show a minimum of three reference ties to durable physical objects, relevant monuments and physical conditions that will enable recovery of the corner.)

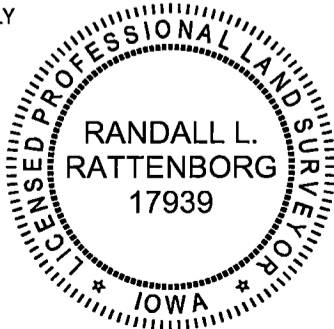


TIES ARE TO PLAT Retracement in SE 1/4- SE 1/4
IN SECTION 17, T 90 N, R 5 W

BURRINGTON GROUP, INC. PROJECT NO. 25-056

I HEREBY CERTIFY THAT THIS LAND SURVEYING DOCUMENT
WAS PREPARED AND THE RELATED SURVEY WORK WAS
PERFORMED BY ME OR UNDER MY DIRECT PERSONAL
SUPERVISION AND THAT I AM A DULY LICENSED PROFESSIONAL
LAND SURVEYOR UNDER THE LAWS OF THE STATE OF IOWA.

SEAL COVERS THIS SHEET ONLY



[Signature] 7/22/2025
Randall L. Rattenborg, P.L.S. License #17939 Date
My license renewal date is December 31, 2025
List Corners to be Indexed: Section Township Range
Center of Section 17 T 90N R 5 W
NW Corner SW 1/4 - SE 1/4
NE Corner SE 1/4 -SE 1/4

BURRINGTON GROUP, INC.
Civil Engineering | Land Surveying
105 W. Main Street Manchester, Iowa 52057