

Recorded: 7/21/2025 at 11:18:22.0 AM  
County Recording Fee: \$7.00  
Iowa E-Filing Fee: \$3.00  
Combined Fee: \$10.00  
Revenue Tax: \$0.00  
Delaware County, Iowa  
Daneen Schindler RECORDER  
BK: 2025 PG: 1935

Prepared by & Return to: Kirk D. Reicks, HRS, LLC, 10 East Main Street, New Hampton, IA 50659, Phone 641-394-2725

United States Public Land Survey Corner Certificate

Land Survey Monument situated in  
Section 6, Township 88 North, Range 6 West of the Fifth Principal Meridian, Delaware County, Iowa.  
Not on file in the County Recorder's Office.

This certificate is being prepared in compliance with Iowa Code Chapter 355.11 because:   
☒ There is no certificate on file for this corner.  
☐ There are no longer three valid ties of record.  
☐ There are changes to reference ties of record.  
☐ There is change of monumentation of record.  
☐ To clarify description of record monument (ties).

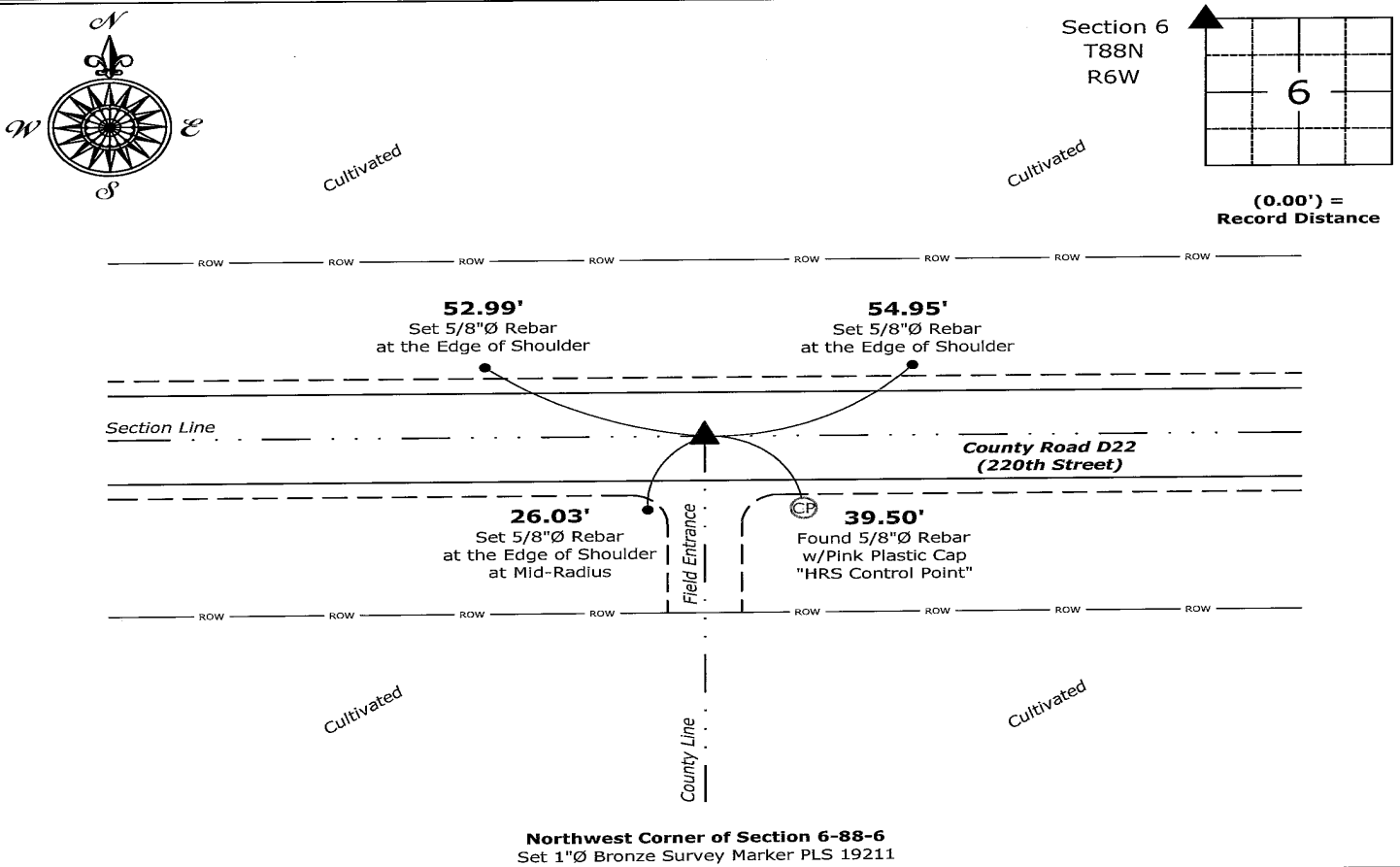
Monument Description and Remarks:

Northwest Corner:

Found Spike with information obtained from the IDOT Section Corner Ties Project #20-10-0200-001 (Buchanan County).  
Set 1"Ø Bronze Survey Marker PLS 19211 with coordinates of the found location obtained prior to highway reconstruction.  
Corner reset in conjunction with Project No. FM-CO28(102)--55-28.

Plan View - Not to Scale

(Show a minimum of three reference ties to durable physical objects, relevant monuments and physical conditions that will enable recovery of the corner.)



I hereby certify that this land surveying document was prepared and the related survey work was performed by me or under my direct personal supervision and that I am a duly licensed Land Surveyor under the laws of the State of Iowa.  
*Kirk D. Reicks* 7-18-2025  
Kirk D. Reicks Date:  
License Number 19211  
My license renewal date is December 31, 2026.  
Sheets covered by this seal: Individual sheet only

List Corner to be Indexed			
Corner	Section	Township	Range
NW	6	88	6
Project Number: 2024-874			
FB: D22, Page(s) 1-3			