



Daneen Schindler, RECORDER/REGISTRAR
DELAWARE COUNTY IOWA

PREPARED BY: RANDALL L. RATTENBORG 105 WEST MAIN STREET MANCHESTER, IA 52057, 563-927-2434

UNITED STATES PUBLIC LAND SURVEY CORNER CERTIFICATE

Land Survey Monuments situated in Section 29 , Township 90 North, Range 3 West of the Fifth Principal Meridian,
Delaware County, Iowa.

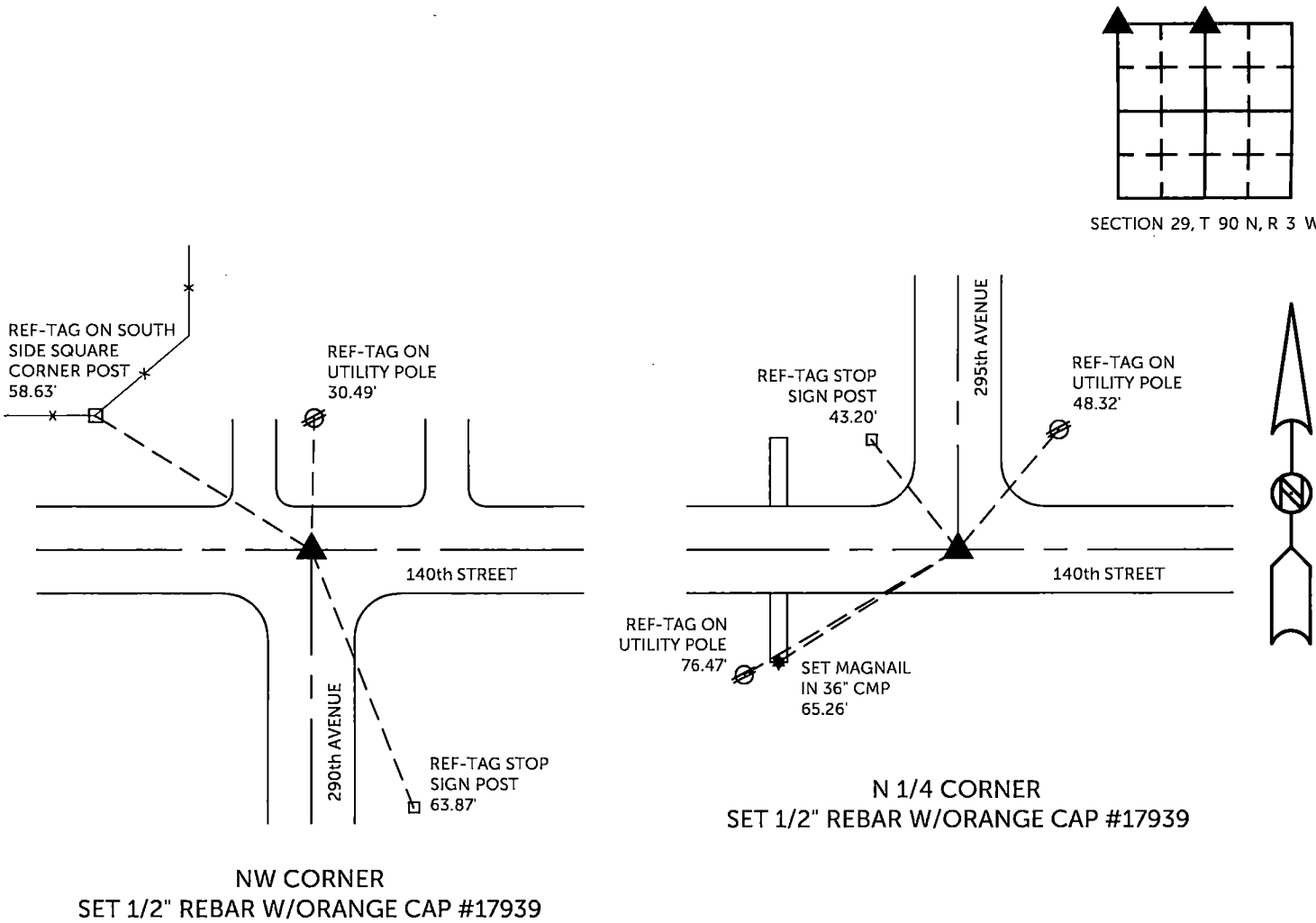
Previously recorded in County Recorder's Office in Not Recorded
(book, page, document number, etc.)

N 1/4 CORNER, Set 1/2" rebar w/orange cap #17939 at the intersection of the centerlines of 295th Avenue and 140th Street. The road record for the Yankee Settlement and Dutch Factory Road (now 140th Street) appears to establish the road on the section lines between Sections 19, 20 and 29, 30. 295th Avenue also appears to be established on the quarter line.

NW CORNER, Set 1/2" rebar w/orange cap #17939 at the intersection of the centerlines of 290th Avenue and 140th Street. The road record for the Yankee Settlement and Dutch Factory Road (now 140th Street) appears to establish the road on the section lines between Sections 19, 20 and 29, 30. 290th Avenue also appears to be established on the quarter line. The fenceline at the west side of the East 1 acre of the SE 1/4 - SE 1/4 of Section 19 is also 33 feet west of the intersection of 290th Avenue and 140th Street.

PLAN VIEW

(Show a minimum of three reference ties to durable physical objects, relevant monuments and physical conditions that will enable recovery of the corner.)



TIES ARE TO PLAT PARCEL 2025-49
IN SECTION 29, T 90 N, R 3 W

BURRINGTON GROUP, INC. PROJECT NO. 25-041

I HEREBY CERTIFY THAT THIS LAND SURVEYING DOCUMENT
WAS PREPARED AND THE RELATED SURVEY WORK WAS
PERFORMED BY ME OR UNDER MY DIRECT PERSONAL
SUPERVISION AND THAT I AM A DULY LICENSED PROFESSIONAL
LAND SURVEYOR UNDER THE LAWS OF THE STATE OF IOWA.

SEAL COVERS THIS SHEET ONLY



[Signature] *6/11/2025*
Randall L. Rattenborg, P.L.S. License #17939 Date
My license renewal date is December 31, 2025
List Corners to be Indexed: Section Township Range
N 1/4 CORNER 29 T 90 N R 3 W
NW CORNER



BURRINGTON GROUP, INC.
Civil Engineering | Land Surveying
105 W. Main Street Manchester, Iowa 52057