



Book 2025 Page 733

Document 2025 733 Type 06 007 Pages 1  
Date 3/24/2025 Time 1:32:28PM  
Rec Amt \$7.00

Daneen Schindler, RECORDER/REGISTRAR  
DELAWARE COUNTY IOWA

Prepared by: SCHNEIDER Land Surveying and Planning, Inc. P.O. Box 128 Farley, Iowa 52046 563-744-3631

### UNITED STATES PUBLIC LAND SURVEY CORNER CERTIFICATE OF

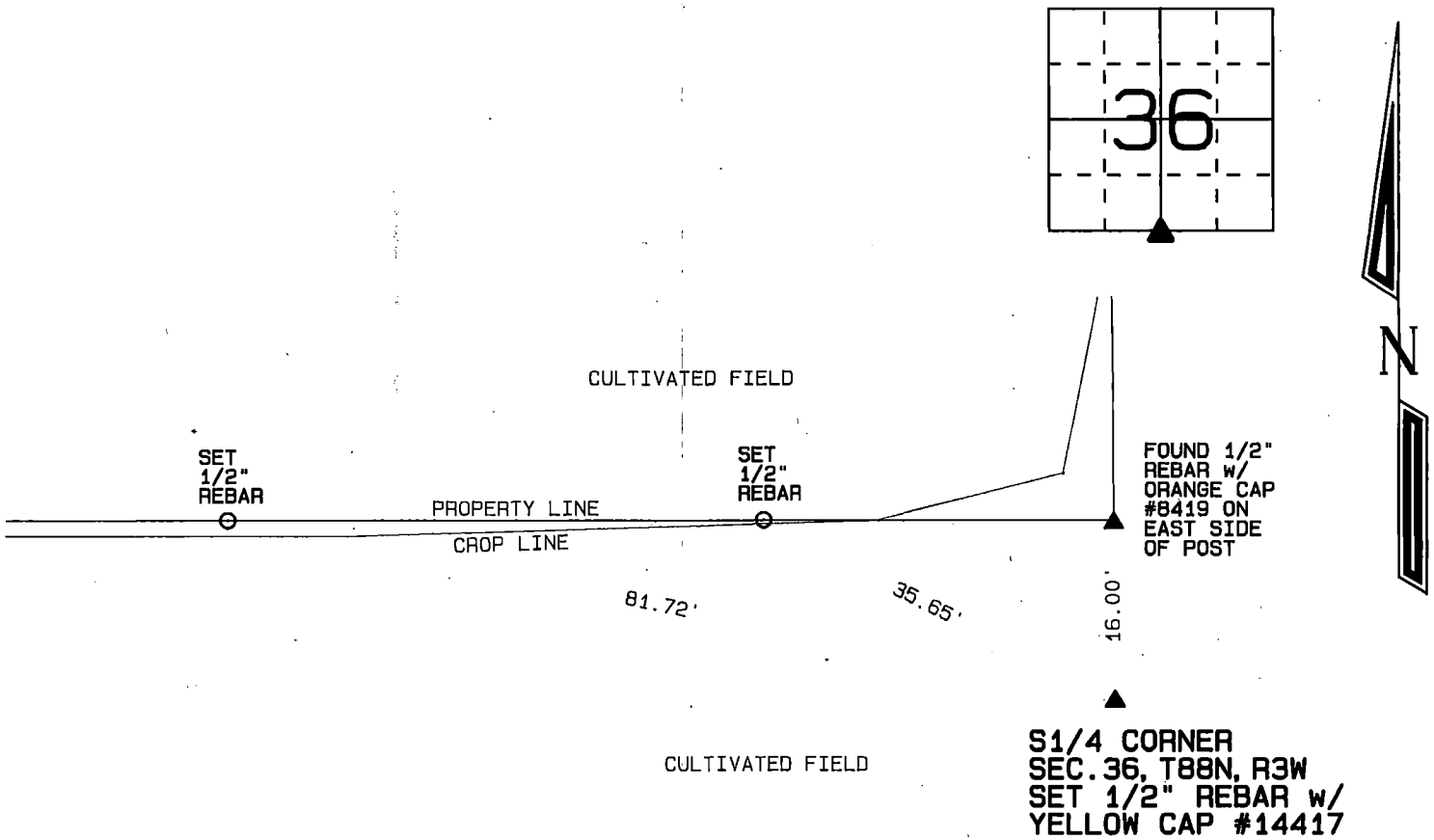
Land Survey Monuments situated in Section 36, Township 88 North, Range 3 West  
of the Fifth Principal Meridian, Delaware County, Iowa.  
Previously recorded BOOK 2, PAGE 150

(BOOK, PAGE / INST. NO. / CABINET, SLIDE)

Monument Description and Remarks:

THE S1/4 CORNER OF SEC. 36, T88N, R3W WAS RESET AS ILLUSTRATED ON A PLAT OF SURVEY FILED SEPTEMBER 23, 1998,  
IN BOOK 8, PAGE 158.

### PLAN - VIEW



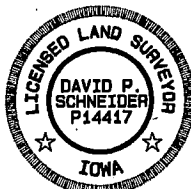
I hereby certify that this land surveying document was prepared and the related survey work was performed by me or under my direct personal supervision and that I am a duly licensed Land Surveyor under the laws of the State of Iowa.

*David P. Schneider*  
David P. Schneider P.L.S. P14417 Date: 3/21/2025  
My license renewal date is December 31, 2025.

Pages or sheets covered by this seal: THIS SHEET ONLY

**SCHNEIDER**  
Land Surveying & Planning, Inc.

P.O. Box 128 Farley, Iowa 52046  
Ph. #563-744-3631 daves@yousq.net



#### List Corners to be Indexed

Corners	Section	Twp	Range
S1/4 CORNER	36	88N	3W

JOB NO. 2949A