



Book 2025 Page 599

Document 2025 599 Type 06 007 Pages 1

Date 3/07/2025 Time 1:56:18PM

Rec Amt \$7.00

Daneen Schindler, RECORDER/REGISTRAR
DELAWARE COUNTY IOWA

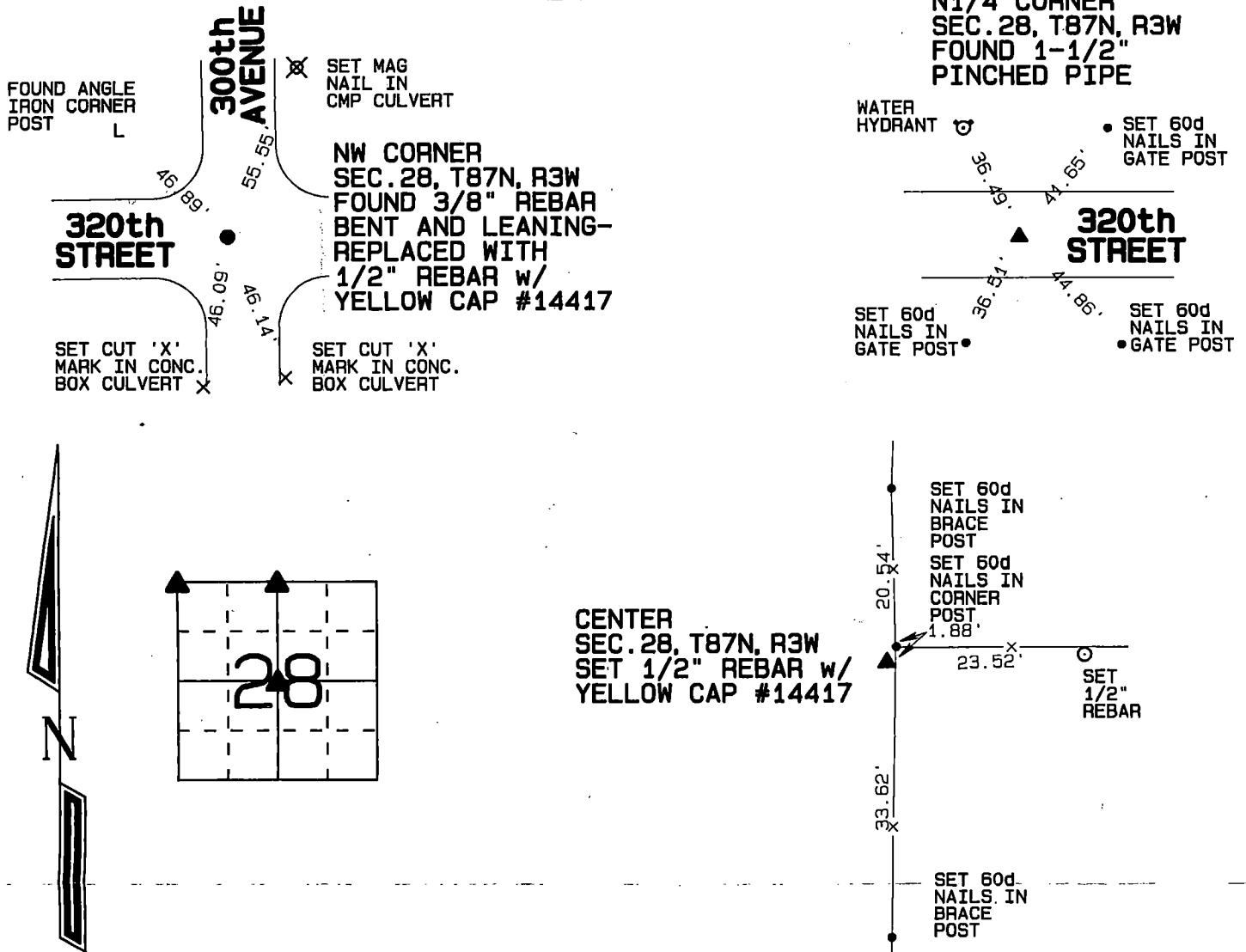
Prepared by: SCHNEIDER Land Surveying and Planning, Inc. P.O. Box 128 Farley, Iowa 52046 563-744-3631

UNITED STATES PUBLIC LAND SURVEY CORNER CERTIFICATE OF

Land Survey Monuments situated in Section 28, Township 87 North, Range 3 West of the Fifth Principal Meridian, Delaware County, Iowa.
Previously recorded (NONE OF RECORD)
(BOOK, PAGE / INST. NO. / CABINET, SLIDE)

Monument Description and Remarks: FOUND A 3/8" REBAR WAS FOUND BENT AND LEANING AT THE NW CORNER OF SEC.28, T87N, R3W. THE ROD WAS REPLACED WITH A 1/2" REBAR w/ YELLOW CAP #14417 AND TIED. AN 1-1/2" PINCHED PIPE WAS FOUND AT THE N1/4 CORNER OF SEC.28, T87N, R3W AS ILLUSTRATED ON UNRECORDED IOWA DOT SECTION CORNER TIES. THE CENTER OF SEC.28, T87N, R3W WAS PLACED ON THE EAST-WEST CENTERLINE OF SECTION 28 AND IN LINE WITH THE OCCUPATION FENCES LOCATED NORTH AND SOUTH OF THE CORNER.

PLAN - VIEW



I hereby certify that this land surveying document was prepared and the related survey work was performed by me or under my direct personal supervision and that I am a duly licensed Land Surveyor under the laws of the State of Iowa

David P. Schneider 2/20/2025
David P. Schneider P.L.S. P14417 Date:
My license renewal date is December 31, 2025.

Pages or sheets covered by this seal: THIS SHEET ONLY

List Corners to be Indexed

Corners	Section	Twp	Range
NW CORNER	28	87N	3W
N1/4 CORNER	28	87N	3W
CENTER	28	87N	3W

SCHNEIDER
Land Surveying & Planning, Inc.

P.O. Box 128 Farley, Iowa 52046
Ph. #563-744-3631 daves@yousq.net



JOB NO. 2775PS