



Book 2025 Page 598

Document 2025 598 Type 06 007 Pages 1  
Date 3/07/2025 Time 1:55:58PM  
Rec Amt \$7.00

Daneen Schindler, RECORDER/REGISTRAR  
DELAWARE COUNTY IOWA

Prepared by: SCHNEIDER Land Surveying and Planning, Inc. P.O. Box 128 Farley, Iowa 52046 563-744-3631

### UNITED STATES PUBLIC LAND SURVEY CORNER CERTIFICATE OF

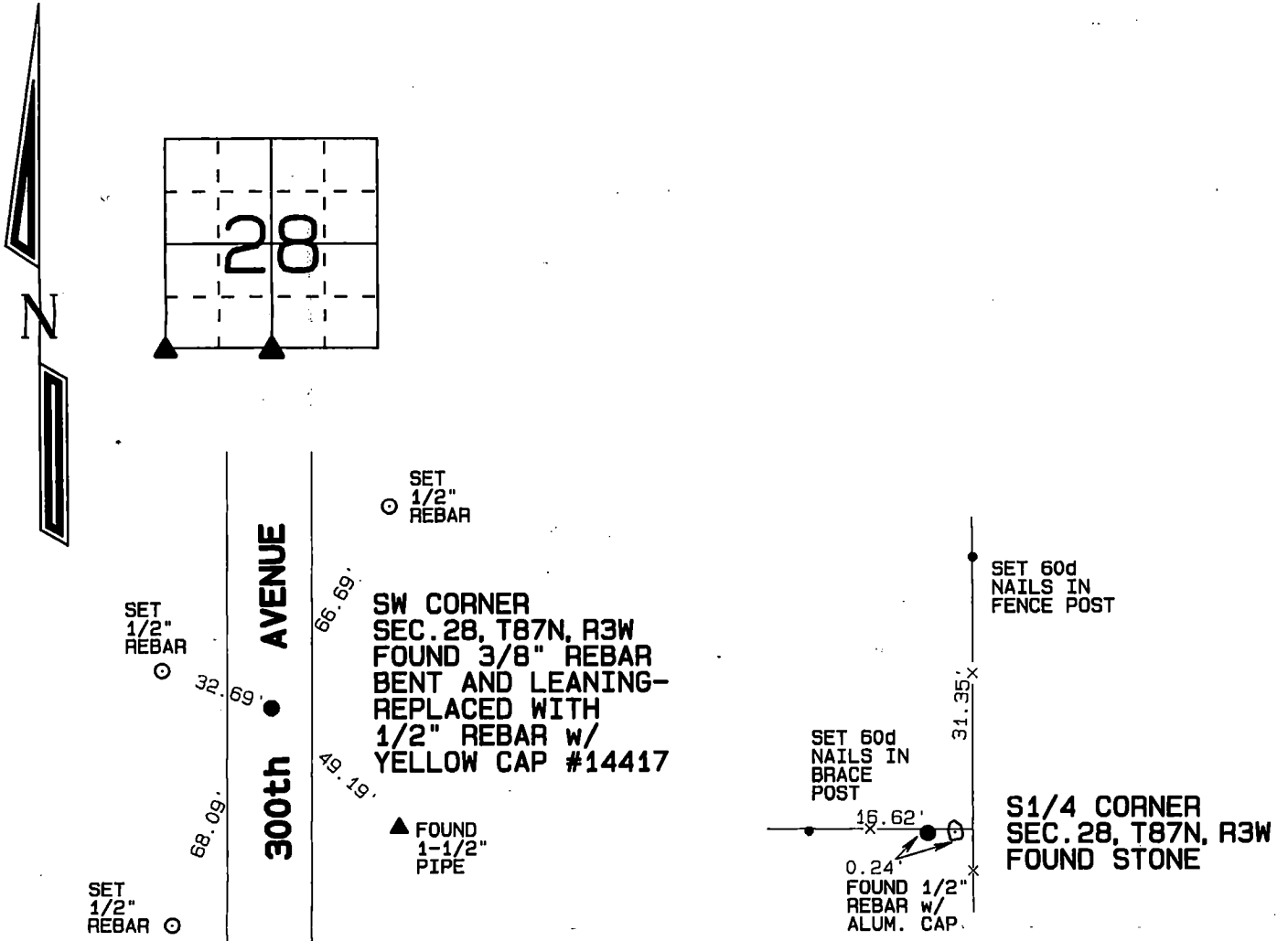
Land Survey Monuments situated in Section 28, Township 87 North, Range 3 West of the Fifth Principal Meridian, Delaware County, Iowa.

Previously recorded SEE BELOW

(BOOK, PAGE / INST. NO. / CABINET, SLIDE)

Monument Description and Remarks: A 3/8" REBAR WAS FOUND BENT AND LEANING AT THE SW CORNER OF SEC. 28, T87N, R3W. THE ROD WAS CONSISTENT WITH UNRECORDED SECTION CORNER TIES PREPARED BY THE IOWA DOT. THE ROD WAS REPLACED WITH A 1/2" REBAR w/ YELLOW CAP #14417 AND TIED. A LIMESTONE NEXT TO A 1/2" REBAR w/ ALUM. CAP #7060 WAS FOUND AT THE S1/4 CORNER OF SEC. 28, T87N, R3W AS ILLUSTRATED ON SECTION CORNER CERTIFICATE BOOK 2000, PAGE 671.

### PLAN - VIEW



I hereby certify that this land surveying document was prepared and the related survey work was performed by me or under my direct personal supervision and that I am a duly licensed Land Surveyor under the laws of the State of Iowa.

*David P. Schneider* 2/20/2025  
David P. Schneider P.L.S. P14417 Date:  
My license renewal date is December 31, 2025.

Pages or sheets covered by this seal: THIS SHEET ONLY

**SCHNEIDER**  
Land Surveying & Planning, Inc.

P.O. Box 128 Farley, Iowa 52046  
Ph. #563-744-3631 daves@yousq.net



#### List Corners to be Indexed

Corners	Section	Twp	Range
SW CORNER	28	87N	3W
S1/4 CORNER	28	87N	3W

JOB NO. 2775PS