



Book 2025 Page 47

Document 2025 47 Type 06 007 Pages 1  
Date 1/06/2025 Time 12:24:25PM  
Rec Amt \$7.00

Daneen Schindler, RECORDER/REGISTRAR  
DELAWARE COUNTY IOWA

Prepared by & Return to: Kirk D. Reicks, HRS, LLC, 10 East Main Street, New Hampton, IA 50659, Phone 641-394-2725

## United States Public Land Survey Corner Certificate

Land Survey Monument situated in  
Section 8, Township 89 North, Range 5 West of the Fifth Principal Meridian, Delaware County, Iowa.  
On file in Book 2020, Page 4691 in the County Recorder's Office.

This certificate is being prepared in compliance with Iowa Code Chapter 355.11 because:

- ☐ There is no certificate on file for this corner.  
☒ There are no longer three valid ties of record.  
☐ There are changes to reference ties of record.  
☒ There is change of monumentation of record.  
☐ To clarify description of record monument (ties).

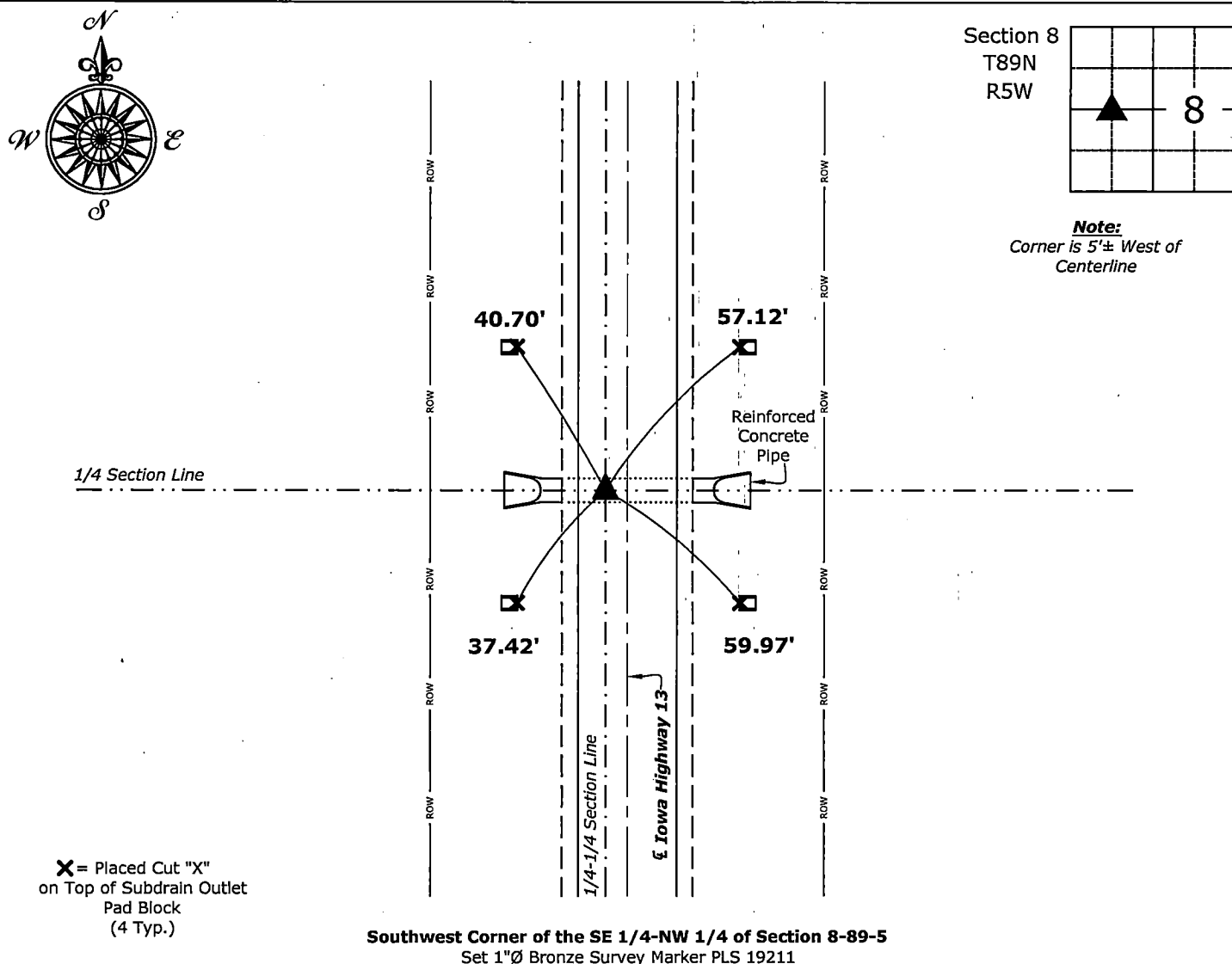
### Monument Description and Remarks:

#### Southwest Corner of the SE 1/4-NW 1/4:

Found Cut "X" with information obtained from the previously recorded Section Corner Certificate.  
Set 1"Ø Bronze Survey Marker PLS 19211 with coordinates of the found location obtained prior to highway reconstruction.  
Corner reset in conjunction with Project No. NHSX-013-2(42)--3H-28.

## Plan View - Not to Scale

(Show a minimum of three reference ties to durable physical objects, relevant monuments and physical conditions that will enable recovery of the corner.)



I hereby certify that this land surveying document was prepared and the related survey work was performed by me or under my direct personal supervision and that I am a duly licensed Land Surveyor under the laws of the State of Iowa.

*Kirk D. Reicks* 1-2-2025  
Kirk D. Reicks Date:

License number 19211  
My license renewal date is December 31, 2026.  
Sheets covered by this seal: Individual sheet only

### List Corner to be Indexed

Corner	Section	Township	Range
SW-SE-NW	8	89	5

Project Number: 2024-835

FB: 2024-835, Page(s) 1-4