

Document 2024 3144 Type 06 007 Pages 1  
Date 12/17/2024 Time 10:03:36AM  
Rec Amt \$7.00

Daneen Schindler, RECORDER/REGISTRAR  
DELAWARE COUNTY IOWA

PREPARED BY: RANDALL L. RATTENBORG 105 WEST MAIN STREET MANCHESTER, IA 52057, 563-927-2434

Land Survey Monuments situated in Section 16 , Township 88 North, Range 5 West of the Fifth Principal Meridian,  
Delaware County, Iowa.

Previously recorded in County Recorder's Office in            Corner Certificate Book 2, Page 116

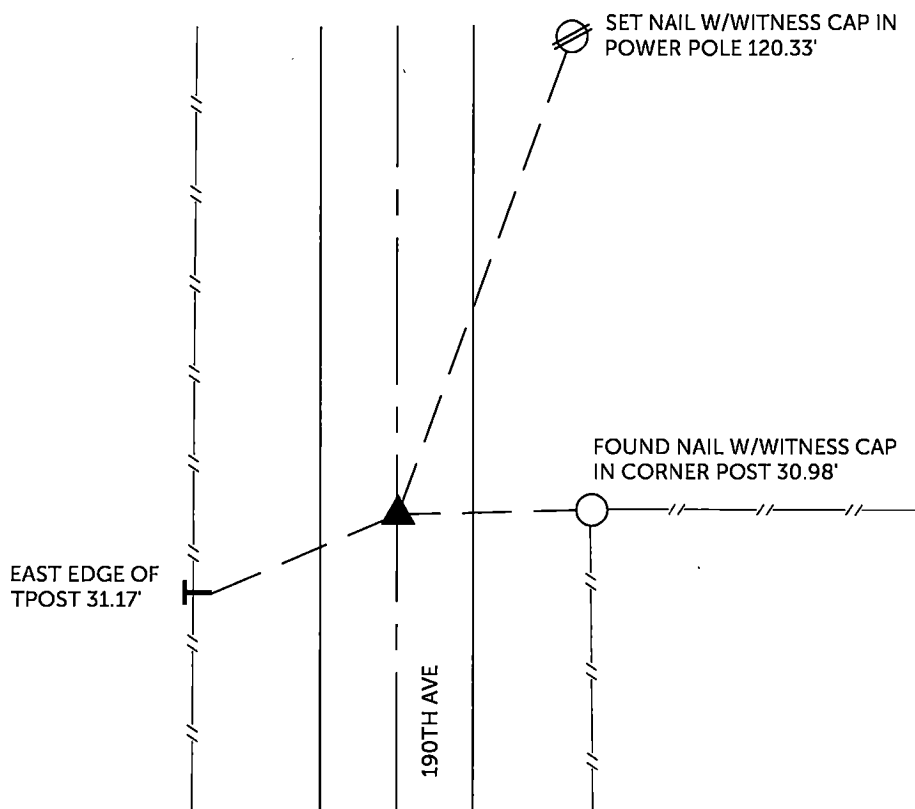
(book, page, document number, etc.)

E 1/4 CORNER, Found 1/2" rebar w/orange cap #8419 as per corner certificate recorded in Corner Certificate Book 2, Page 116. This certificate being issued due to missing tie objects.

(Show a minimum of three reference ties to durable physical objects, relevant monuments and physical conditions that will enable recovery of the corner.)

A 4x4 grid with a black triangle at the intersection of the 3rd column and 4th row.

SECTION 16, T 88 N, R 5 W



TIES ARE TO PLAT      PARCEL 2024-101  
IN SECTION 16, T 88 N, R 5 W

BARRINGTON GROUP, INC. PROJECT NO. 24-133

I HEREBY CERTIFY THAT THIS LAND SURVEYING DOCUMENT  
WAS PREPARED AND THE RELATED SURVEY WORK WAS  
PERFORMED BY ME OR UNDER MY DIRECT PERSONAL  
SUPERVISION AND THAT I AM A DULY LICENSED PROFESSIONAL  
LAND SURVEYOR UNDER THE LAWS OF THE STATE OF IOWA.

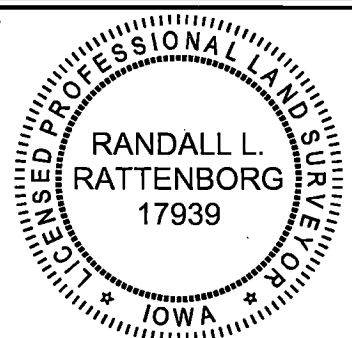
SEAL COVERS THIS SHEET ONLY

Randall L. Rattenborg, P.L.S. License #17939 Date  
My license renewal date is December 31, 2025

List Corners to be Indexed:                      Section    Township    Range

E 1/4 CORNER	16	T 88 N	R 5 W
--------------	----	--------	-------

E 1/4 CORNER	16	T 88 N	R 5 W
--------------	----	--------	-------



**BURRINGTON GROUP, INC.**

Civil Engineering | Land Surveying

105 W. Main Street Manchester, Iowa 52057