



Book 2024 Page 2909

Document 2024 2909 Type 06 007 Pages 1  
Date 11/18/2024 Time 2:14:01PM  
Rec Amt \$7.00

Daneen Schindler, RECORDER/REGISTRAR  
DELAWARE COUNTY IOWA

PREPARED BY: RANDALL L. RATTENBORG 105 WEST MAIN STREET MANCHESTER, IA 52057, 563-927-2434

# UNITED STATES PUBLIC LAND SURVEY CORNER CERTIFICATE

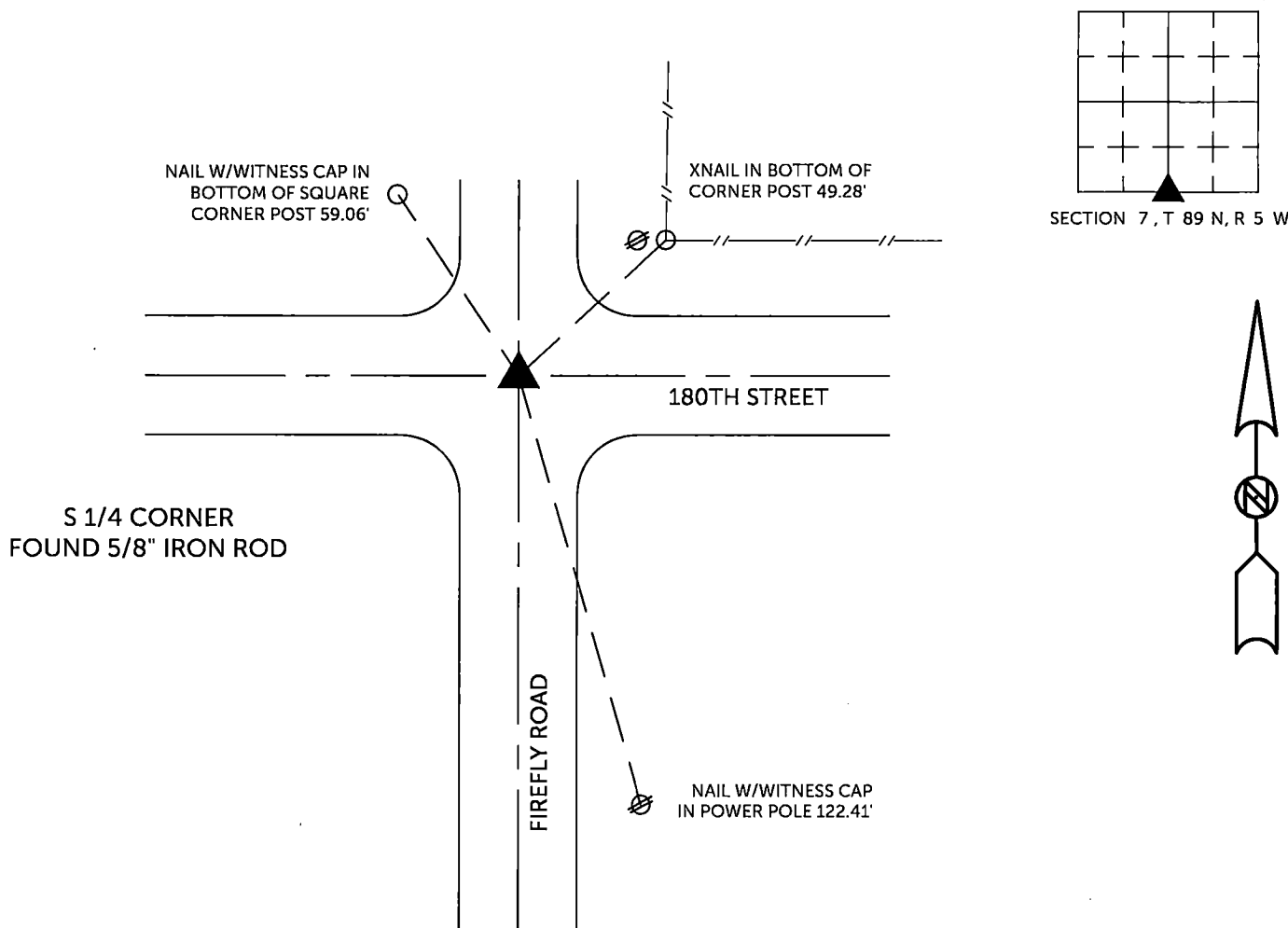
Land Survey Monuments situated in Section 7, Township 89 North, Range 5 West of the Fifth Principal Meridian,  
Delaware County, Iowa.

Previously recorded in County Recorder's Office in BOOK 2012, PAGE 4421  
(book, page, document number, etc.)

S 1/4 CORNER, Found 5/8" iron rod as per survey recorded in Book 2012, Page 4421. This Corner Certificate is being issued due to missing tie objects.

## PLAN VIEW

(Show a minimum of three reference ties to durable physical objects, relevant monuments and physical conditions that will enable recovery of the corner.)

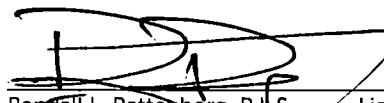


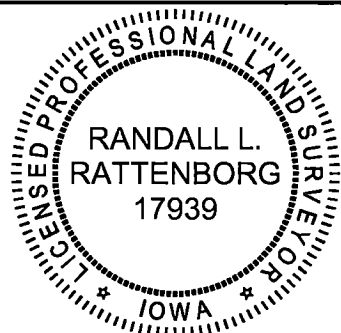
TIES ARE TO PLAT PARCEL 2024-98, PARCEL 2024-99  
IN SECTION 7, T 89 N, R 5 W

BURRINGTON GROUP, INC. PROJECT NO. 24-132

I HEREBY CERTIFY THAT THIS LAND SURVEYING DOCUMENT WAS PREPARED AND THE RELATED SURVEY WORK WAS PERFORMED BY ME OR UNDER MY DIRECT PERSONAL SUPERVISION AND THAT I AM A DULY LICENSED PROFESSIONAL LAND SURVEYOR UNDER THE LAWS OF THE STATE OF IOWA.

SEAL COVERS THIS SHEET ONLY

 11/15/2024  
 Randall L. Rattenborg, P.L.S. License #17939 Date  
 My license renewal date is December 31, 2025  
 List Corners to be Indexed: Section Township Range  
 S 1/4 CORNER 7 T 89N R 5 W



**BURRINGTON GROUP, INC.**  
 Civil Engineering | Land Surveying  
 105 W. Main Street · Manchester, Iowa 52057