



Book 2024 Page 2862

Document 2024 2862 Type 06 007 Pages 1
Date 11/13/2024 Time 3:51:49PM
Rec Amt \$7.00

Daneen Schindler, RECORDER/REGISTRAR
DELAWARE COUNTY IOWA

PREPARED BY: RANDALL L. RATTENBORG 105 WEST MAIN STREET MANCHESTER, IA 52057, 563-927-2434

UNITED STATES PUBLIC LAND SURVEY CORNER CERTIFICATE

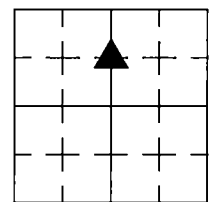
Land Survey Monuments situated in Section 11, Township 89 North, Range 4 West of the Fifth Principal Meridian,
DELAWARE County, Iowa.

Previously recorded in County Recorder's Office in NOT RECORDED
(book, page, document number, etc.)

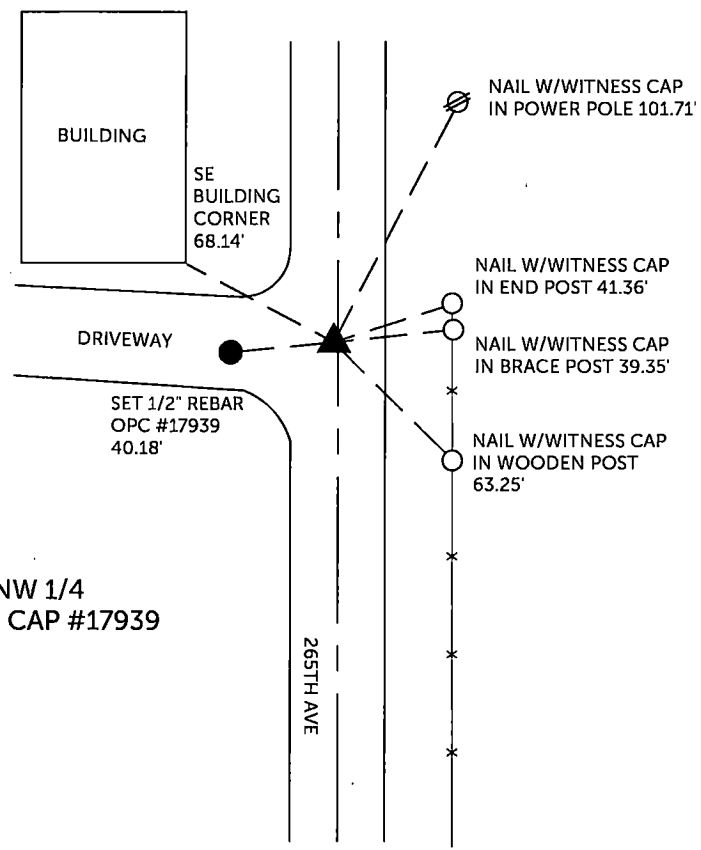
SE CORNER NE 1/4 - NW 1/4, Set 1/2" rebar w/orange cap #17939 at the theoretical location between the N 1/4 Corner and Center of Section.

PLAN VIEW

(Show a minimum of three reference ties to durable physical objects, relevant monuments and physical conditions that will enable recovery of the corner.)



SECTION 11, T 89 N, R 4 W



SE CORNER NE 1/4 - NW 1/4
SET 1/2" REBAR W/ORANGE CAP #17939

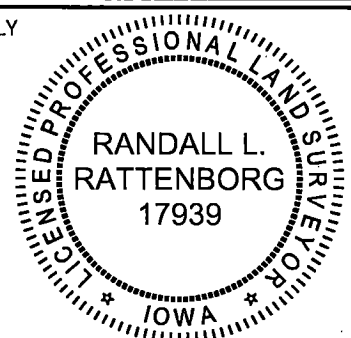


TIES ARE TO PLAT OF PARCEL 2024-97
IN SECTION 11, T 89 N, R 4 W

BURRINGTON GROUP, INC. PROJECT NO. 24-135

I HEREBY CERTIFY THAT THIS LAND SURVEYING DOCUMENT
WAS PREPARED AND THE RELATED SURVEY WORK WAS
PERFORMED BY ME OR UNDER MY DIRECT PERSONAL
SUPERVISION AND THAT I AM A DULY LICENSED PROFESSIONAL
LAND SURVEYOR UNDER THE LAWS OF THE STATE OF IOWA.

SEAL COVERS THIS SHEET ONLY



Randall L. Rattenborg, P.L.S. License #17939 Date 11/13/2024
My license renewal date is December 31, 2025

List Corners to be Indexed: Section Township Range
SE CORNER NE 1/4 - NW 1/4 11 T 89N R 4 W

BURRINGTON GROUP, INC.
Civil Engineering | Land Surveying
105 W. Main Street Manchester, Iowa 52057