



Book 2024 Page 2429

Document 2024 2429 Type 06 007 Pages 1
Date 9/30/2024 Time 3:32:27PM
Rec Amt \$7.00

Daneen Schindler, RECORDER/REGISTRAR
DELAWARE COUNTY IOWA

PREPARED BY: RANDALL L. RATTENBORG 105 WEST MAIN STREET MANCHESTER, IA 52057, 563-927-2434

UNITED STATES PUBLIC LAND SURVEY CORNER CERTIFICATE

Land Survey Monuments situated in Section 31, Township 89 North, Range 5 West of the Fifth Principal Meridian,
Delaware County, Iowa.

Previously recorded in County Recorder's Office in NOT RECORDED

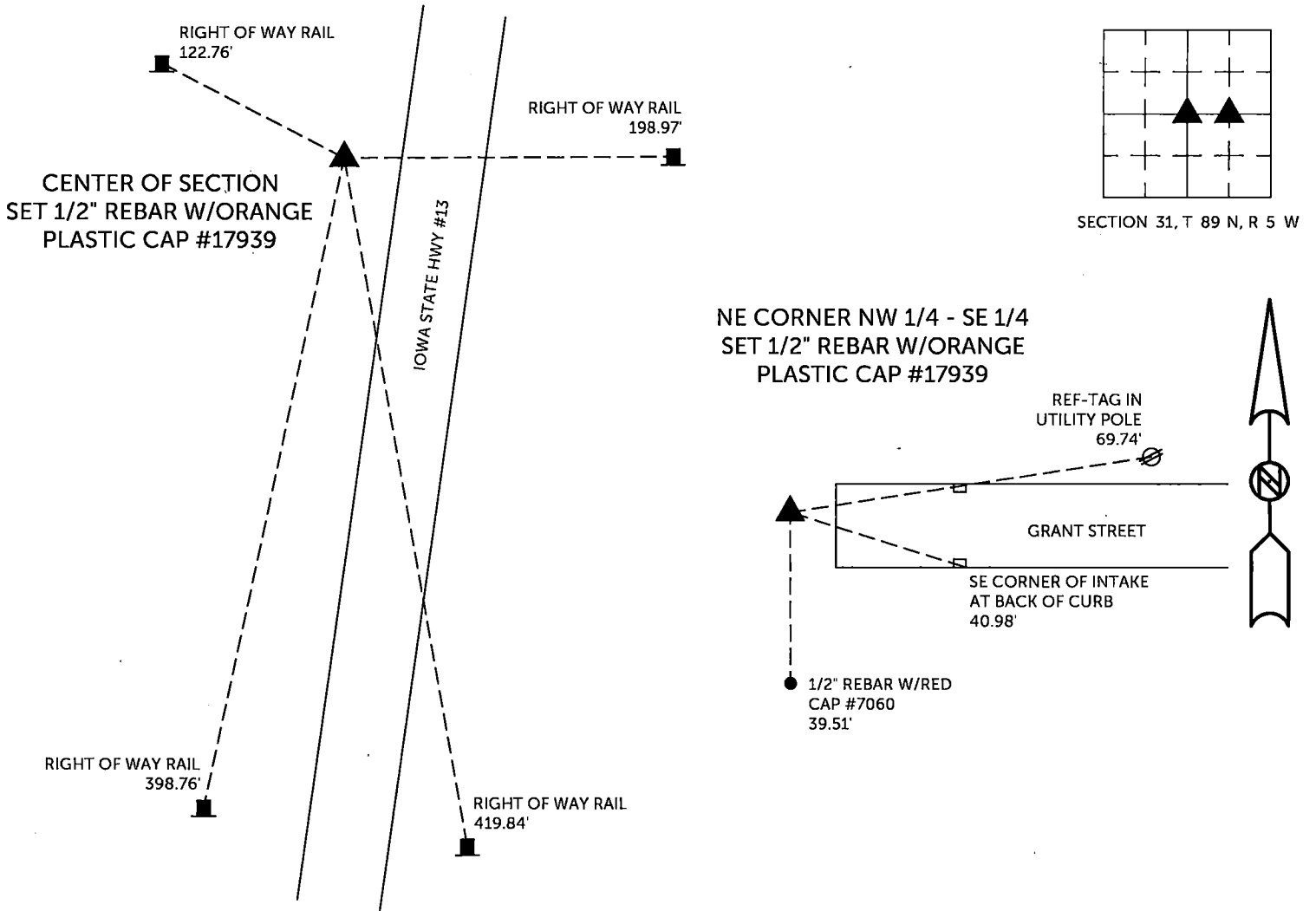
(book, page, document number, etc.)

CENTER OF SECTION, Set 1/2" rebar w/orange cap #17939 on a line from the E 1/4 Corner through a Iowa D.O.T. right of way rail to the quarter line between the N 1/4 Corner and the S 1/4 Corners.

NE CORNER NW 1/4 - SE 1/4, Set 1/2" rebar w/orange cap #17939 at the intersection of a line from the E 1/4 Corner through an Iowa D.O.T. right of way rail to the Center of Section with the westerly line of the Southwest Industrial Park Third Subdivision.

PLAN VIEW

(Show a minimum of three reference ties to durable physical objects, relevant monuments and physical conditions that will enable recovery of the corner.)

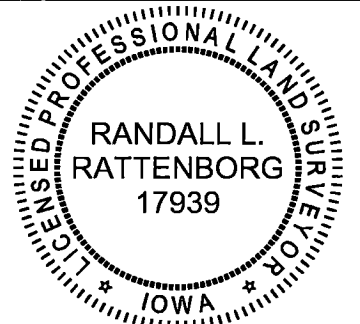


TIES ARE TO PLAT HOULIHAN AG SUBDIVISION #3
IN SECTION 31, T 89 N, R 5 W

BURRINGTON GROUP, INC. PROJECT NO. 23-059

I HEREBY CERTIFY THAT THIS LAND SURVEYING DOCUMENT WAS PREPARED AND THE RELATED SURVEY WORK WAS PERFORMED BY ME OR UNDER MY DIRECT PERSONAL SUPERVISION AND THAT I AM A DULY LICENSED PROFESSIONAL LAND SURVEYOR UNDER THE LAWS OF THE STATE OF IOWA.

SEAL COVERS THIS SHEET ONLY



[Signature] *9/30/2024*

Randall L. Rattenborg, P.L.S. License #17939 Date
My license renewal date is December 31, 2025

List Corners to be Indexed: Section Township Range

CENTER OF SECTION 31 T 89N R 5 W
NE CORNER NW 1/4-SE 1/4

BURRINGTON GROUP, INC.
Civil Engineering | Land Surveying
105 W. Main Street Manchester, Iowa 52057